

PRODUCT DESCRIPTION CODE:  
10131932-YXXXLF

PLATING:  
(AS AVAILABLE)

- 1 = 0.76  $\mu$ m GOLD ON CONTACT AREA  
2.00  $\mu$ m MIN MATTE TIN ON TAIL
- 2 = 0.38  $\mu$ m GOLD ON CONTACT AREA  
2.00  $\mu$ m MIN MATTE TIN ON TAIL
- 3 = 0.20  $\mu$ m GOLD ON CONTACT AREA  
2.00  $\mu$ m MIN MATTE TIN ON TAIL
- 4 = 0.76  $\mu$ m GXT ON CONTACT AREA  
2.00  $\mu$ m MIN MATTE TIN ON TAIL
- 5 = 0.38  $\mu$ m GXT ON CONTACT AREA  
2.00  $\mu$ m MIN MATTE TIN ON TAIL
- 6 = 0.20  $\mu$ m GXT ON CONTACT AREA  
2.00  $\mu$ m MIN MATTE TIN ON TAIL
- 9 = 2.54  $\mu$ m MIN MATTE TIN ON CONTACT AREA  
2.00  $\mu$ m MIN MATTE TIN ON TAIL

RoHS COMPATIBLE, SEE NOTE 3

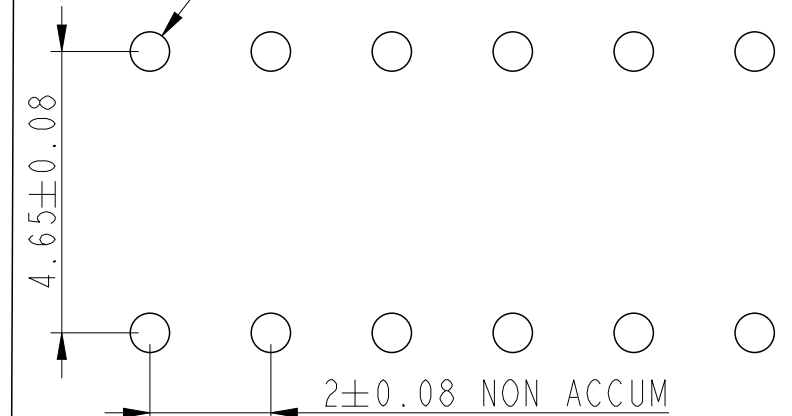
PACKAGING:  
"U" FOR TUBE

TOTAL NUMBER OF POSITIONS: 04 TO 50

EXTENDED RANGE

- TOOLING FEASIBILITY CONFIRMED
- SAMPLES ON DEMAND
- AVAILABILITY ON DEMAND

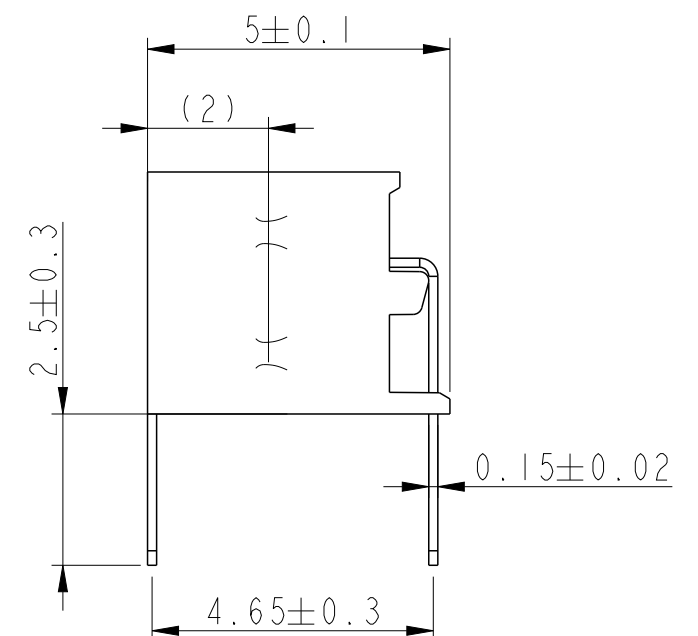
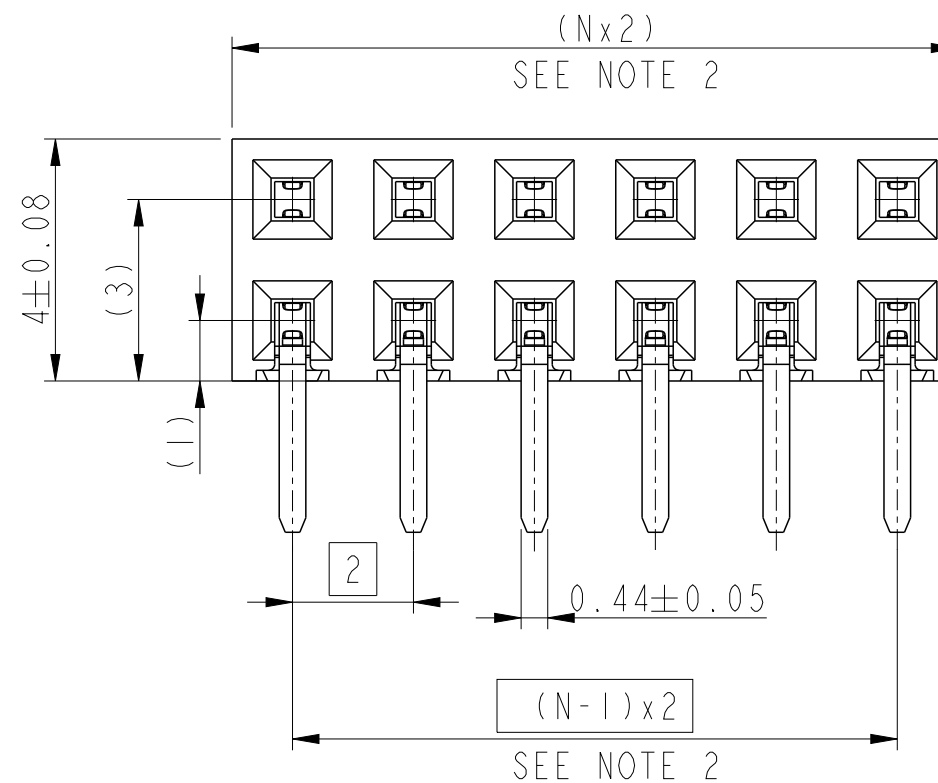
$\varnothing 0.65$  MIN

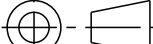




RECOMMENDED HOLE PATTERN

NOTES :

- 1 - MATERIAL  
HOUSING : HIGH TEMPERATURE GLASS FILLED FLAME  
RETARDANT PER UL 94 V-0  
TERMINAL: COPPER ALLOY
- 2 - TO DETERMINE DIMENSIONS :  
N = NUMBER OF POSITIONS PER ROW  
EXAMPLE : 8 POS N x 2 = 16mm  
UP TO N = 24 TOLERANCE : 0  
-0.10  
FROM N = 26 TOLERANCE : 0.05  
-0.10
- 3 - RoHS COMPATIBLE PRODUCT SPECIFICATIONS
- a - PLATING :  
"LF" MEANS THE PRODUCT IS LEAD-FREE, 2  $\mu$ m MINIMUM  
MATTE TIN OVER 1.27  $\mu$ m MINIMUM NICKEL UNDERPLATE
- b - MANUFACTURING PROCESS COMPATIBILITY  
THE HOUSING WILL WITHSTAND EXPOSURE TO 260°C  $\pm$  5°C  
SOLDER BATH TEMPERATURE FOR 5 SECONDS IN A WAVE SOLDER  
APPLICATION WITH A 1.6mm MIN THICK CIRCUIT BOARD.
- c - LABELLING :  
MEETS PACKAGING SPECS AS PER GS-14-920
- d - LEGAL STATEMENT : SEE GS-47-0004
- 4 - THIS PART SERIES IS NOT INITIALLY INTENDED FOR  
AUTOMOTIVE APPLICATIONS. ADDITIONAL FEES ARE  
CHARGEABLE FOR ANY ADDITIONAL QUALIFICATION AND  
TEST REPORTS PERFORMED OUTSIDE THE SCOPE OF THE  
STANDARD PRODUCT SPECIFICATIONS.
- 5 - UNLESS OTHERWISE APPROVED BY AMPHENOL, ALL PARTS  
AND COMPONENTS ARE DESIGNED & BUILT ACCORDING TO  
AMPHENOL'S SPECIFICATIONS WHICH ARE SUBJECT TO  
CHANGE WITHOUT NOTICE.



|   |  |                                       |       |    |                                    |       |                |            |  |  |                        |  |               |        |              |          |  |     |   |
|---|--|---------------------------------------|-------|----|------------------------------------|-------|----------------|------------|--|--|------------------------|--|---------------|--------|--------------|----------|--|-----|---|
| spec ref  |  | GS-12-1326                            |       |    | dr                                 |       | Cyril Jeune    | 2014/12/02 | <div>projection</div> <div></div> | <div>mm</div> <div></div> | size                   |  | A3            | scale  |              | 8:1      |  |     |   |
| tolerance std   |  | TOLERANCES UNLESS OTHERWISE SPECIFIED |       |    | eng                                |       | Detouillon, Da | 2025/02/05 |  |  | ecn no                 |  | ELX-F-54287-1 |        |              |          |  |     |   |
| ISO 406<br>ISO 1101   |  |                                       |       |    | chr                                |       | -              | -          |  |  | rel level              |  | Released      |        |              |          |  |     |   |
|   |  |                                       |       |    | appr                               |       | Lamy, Alexandr | 2025/02/06 | product family   |  | -                      |  |               |        |              |          |  |     |   |
| <div>surface</div> <div></div> <div>ISO 1302</div> |  | linear                                | 0.X   | ±  | <div>Amphenol</div> <div>FCI</div> | title |                |            |  | MINITEK RECEPTACLE 2MM<br>ASSEMBLY HCC DR TMT  |                        |  |               | dwg no |              | 10131932 |  | rev | B |
|   |  |                                       | 0.XX  | ±  |                                    |       |                |            |  |  |                        |  |               |        |              |          |  |     |   |
|   |  |                                       | 0.XXX | ±  |                                    |       |                |            |  |  |                        |  |               |        |              |          |  |     |   |
|   |  | angular                               | 0°    | ±° | www.fci.com                        |       | cat. no.       |            | -  |  | Product - Customer Drw |  |               |        | sheet 1 of 1 |          |  |     |   |