



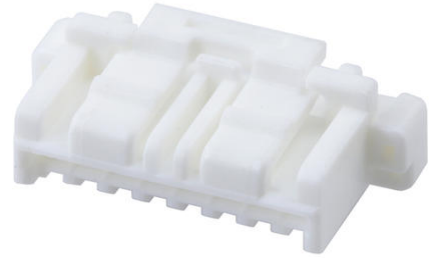
Part Number : [5025780800](#)

Product Description : CLIK-Mate Plug Housing,
1.50mm Pitch, Single Row, Positive Lock, 8 Circuits,
Natural

Series Number : 502578

Status : Active

Product Category : Connector Housings



Documents and Resources

Drawings

[5025780800_sd.pdf](#)

3D Models and Design Files

[STEP AP242](#)

[SOLIDWORKS](#)

[Creo](#)

[5025780800.dxf](#)

Specifications

[AS-502578-001-001.pdf](#)

[AS-503395-001-001.pdf](#)

[SPK-502578-001-001.pdf](#)

[5025780000-PS-000.pdf](#)

[5025780001-PS-000.pdf](#)

[5025780002-PS-000.pdf](#)

[5025780003-PS-000.pdf](#)

[5025781000-PS-000.pdf](#)

[5025781002-PS-000.pdf](#)


[5025781003-PS-000.pdf](#)

[5025781004-PS-000.pdf](#)

[5025780004-PS-000.pdf](#)

Product Environment Compliance

Compliance

GADSL/IMDS	Not Relevant
China RoHS	 per SJ/T 11365-2006
EU ELV	Not Relevant
Low-Halogen Status	Not Low-Halogen per IEC 61249-2-21
REACH SVHC	Not Contained per D(2025)7771-DC (04 Feb 2026)
EU RoHS	Compliant per EU 2015/863

Compliance Statements

- EU RoHS
- REACH SVHC
- Low-Halogen

Industry Documents

- IPC 1752A Class C
- IPC 1752A Class D
- Molex Product Compliance Declaration
- IEC-62474
- chemSHERPA (xml)

Substances of Interest

- PFAS

EU RoHS Certificate of Compliance

Additional Product Compliance Information

Part Details

General

Status	Active
Category	Connector Housings
Series	502578
Description	CLIK-Mate Plug Housing, 1.50mm Pitch, Single Row, Positive Lock, 8 Circuits, Natural
Application	Wire-to-Board
Component Type	Housing
Product Name	CLIK-Mate
UPC	800756700526

Agency

UL	E29179
----	--------

Physical

Circuits (maximum)	8
Color - Resin	Natural
Gender	Plug
Glow-Wire Capable	No
Keying to Mating Part	No
Lock to Mating Part	Yes
Material - Resin	Polybutylene Terephthalate (PBT)
Net Weight	406.400/mg
Number of Rows	1
Packaging Type	Bag
Panel Mount	No
Pitch - Mating Interface	1.50mm
Pitch - Termination Interface	1.50mm
Polarized to Mating Part	Yes
Stackable	No
Temperature Range - Operating	-40° to +105°C

Mates With / Use With

Mates with Part(s)

Description	Part Number
1.50mm Pitch CLIK-Mate Bottom Entry Single Row PCB Receptacles	<u>503395</u>
1.50mm Pitch CLIK-Mate Right-Angle Single Row PCB Receptacles	<u>213226</u>
1.50mm Pitch CLIK-Mate Right-Angle Single Row PCB Receptacles	<u>502585</u>
1.50mm Pitch CLIK-Mate Right-Angle Single Row PCB Receptacles	<u>503175</u>
1.50mm Pitch CLIK-Mate Vertical Single Row PCB Receptacles	<u>213225</u>
1.50mm Pitch CLIK-Mate Vertical	<u>502584</u>

Single Row PCB Receptacles	
1.50mm Pitch CLIK-Mate Vertical Single Row PCB Receptacles	<u>503159</u>

Use with Part(s)

Description	Part Number
Pre-Crimped Lead CLIK-Mate 1.50mm Male-to-CLIK-Mate 1.50mm Male, Tin (Sn) Plating, 300.00mm Length, 24 AWG, Black	<u>797581011</u>
1.50mm Pitch CLIK-Mate Male Crimp Terminals	<u>502579</u>
1.50mm Pitch CLIK-Mate Male Crimp Terminals	<u>503429</u>
CLIK-Mate 1.50mm Pitch Male Crimp Terminals	<u>213028</u>
CLIK-Mate 1.50mm Pitch Male Crimp Terminals	<u>213029</u>
Pre-Crimped Lead Clik-Mate Male-to-Clik-Mate Male	<u>215710</u>
Pre-Crimped Lead Clik-Mate Male-to-Pigtail	<u>215711</u>

This document was generated on Jun 10, 2026