

# EO-CF/PT/GN - Socket



0804039

<https://www.phoenixcontact.com/us/products/0804039>

Please be informed that the data shown in this PDF document is generated from our online catalog. Please find the complete data in the user documentation. Our general terms of use for downloads are valid.



Socket, Pin connector pattern type CF, connection method: Push-in spring connection, color: green, nom. voltage: 250 V AC (50 Hz), nominal current: 16 A, for mounting on a DIN rail in the service interface or direct mounting, standards/specifications: VDE 0620-1, Country marking: Germany

## Commercial data

Item number	0804039
Packing unit	5 pc
Minimum order quantity	5 pc
Sales key	BE76
Product key	BE7621
GTIN	4055626225791
Weight per piece (including packing)	73.525 g
Weight per piece (excluding packing)	71.25 g
Customs tariff number	85366990
Country of origin	PL

## Technical data

### Notes

Notes on operation	This socket is not designed for applications with high loads (HL), such as chargers for electric vehicles and large radiant heaters.
--------------------	--

### General

Note	The nominal current does not apply for fuse versions. In this case, the current is determined by the fuse.
------	--

### Product properties

Product type	Socket
Country ID	Germany

### Connection data

Connection method	Push-in spring connection
Stripping length	10 mm
Internal cylindrical gage	A3 B3
Conductor cross section rigid	0.2 mm <sup>2</sup> ... 4 mm <sup>2</sup>
Cross section AWG	24 ... 12 (converted acc. to IEC)
Conductor cross section flexible	0.25 mm <sup>2</sup> ... 2.5 mm <sup>2</sup>
Conductor cross-section, flexible [AWG]	24 ... 14 (converted acc. to IEC)
Conductor cross-section flexible (ferrule without plastic sleeve)	0.25 mm <sup>2</sup> ... 2.5 mm <sup>2</sup>
Flexible conductor cross section (ferrule with plastic sleeve)	0.25 mm <sup>2</sup> ... 2.5 mm <sup>2</sup>
Conductor cross-section flexible (2 conductors with the same cross-section, with TWIN ferrule and plastic sleeve)	0.25 mm <sup>2</sup> ... 2.5 mm <sup>2</sup>
Nominal current	16 A
Nominal voltage	250 V AC (50 Hz)

### Connection cross sections directly pluggable

Conductor cross section rigid	0.5 mm <sup>2</sup> ... 4 mm <sup>2</sup>
Conductor cross-section flexible (ferrule without plastic sleeve)	1 mm <sup>2</sup> ... 2.5 mm <sup>2</sup>
Flexible conductor cross section (ferrule with plastic sleeve)	1 mm <sup>2</sup> ... 2.5 mm <sup>2</sup>

### Signaling

Status display	no
----------------	----

### Dimensions

Width	45 mm
Height	75 mm
Depth	62.1 mm
Depth on NS 35/7,5	63 mm
Depth on NS 35/15	70.5 mm
Hole diameter	4.4 mm

## Material specifications

Color	green (RAL 6021)
Flammability rating according to UL 94	V0
Insulating material	PA
Contact material	CuZn38
Static insulating material application in cold	-60 °C
Relative insulation material temperature index (Elec., UL 746 B)	130 °C
Fire protection for rail vehicles (DIN EN 45545-2) R22	HL 1 - HL 3
Fire protection for rail vehicles (DIN EN 45545-2) R23	HL 1 - HL 3
Fire protection for rail vehicles (DIN EN 45545-2) R24	HL 1 - HL 3
Fire protection for rail vehicles (DIN EN 45545-2) R26	HL 1 - HL 3
Surface flammability NFPA 130 (ASTM E 162)	passed
Specific optical density of smoke NFPA 130 (ASTM E 662)	passed
Smoke gas toxicity NFPA 130 (SMP 800C)	passed

## Connector

Type of plug	Pin connector pattern type CF
--------------	-------------------------------

## Environmental and real-life conditions

### Oscillation/broadband noise

Specification	DIN EN 50155 (VDE 0115-200):2022-06
Spectrum	Long life test category 2, bogie-mounted
Frequency	$f_1 = 5 \text{ Hz}$ to $f_2 = 250 \text{ Hz}$
ASD level	$6.12 \text{ (m/s}^2\text{)}^2\text{/Hz}$
Acceleration	3.12g
Test duration per axis	5 h
Test directions	X-, Y- and Z-axis
Result	Test passed

### Shocks

Specification	DIN EN 50155 (VDE 0115-200):2022-06
Pulse shape	Half-sine
Acceleration	30g
Shock duration	18 ms
Number of shocks per direction	3
Test directions	X-, Y- and Z-axis (pos. and neg.)
Result	Test passed

### Ambient conditions

Degree of protection	IP20
Ambient temperature (operation)	-5 °C ... 40 °C (according to IEC 60884-1, average value over a period of 24 hours not above +35°C)
Ambient temperature (storage/transport)	-25 °C ... 60 °C (for a short time, not exceeding 24 h, -60 °C to +70 °C)

# EO-CF/PT/GN - Socket



0804039

<https://www.phoenixcontact.com/us/products/0804039>

Permissible humidity (storage/transport)	30 % ... 70 %
--	---------------

## Standards and regulations

Standards	
Standards/regulations	VDE 0620-1

## Mounting

Mounting type	for mounting on a DIN rail in the service interface or direct mounting
---------------	--

# EO-CF/PT/GN - Socket

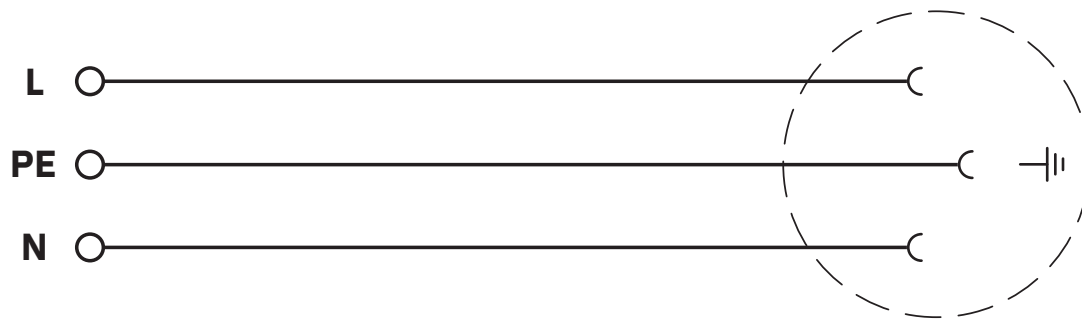
0804039

<https://www.phoenixcontact.com/us/products/0804039>



## Drawings

Circuit diagram



# EO-CF/PT/GN - Socket


0804039


<https://www.phoenixcontact.com/us/products/0804039>




## Approvals

To download certificates, visit the product detail page: <https://www.phoenixcontact.com/us/products/0804039>

	<b>VDE Gutachten mit Fertigungsüberwachung</b> Approval ID: 40047713			
	Nominal voltage U <sub>N</sub>	Nominal current I <sub>N</sub>	Cross section AWG	Cross section mm <sup>2</sup>
keine				
	250 V	16 A	-	-

	<b>EAC-RoHS</b> Approval ID: RU D-DE.HB49.B.00025
---	--

	<b>EAC</b> Approval ID: KZ7500651131219505
---	---

# EO-CF/PT/GN - Socket



0804039

<https://www.phoenixcontact.com/us/products/0804039>

## Classifications

### ECLASS

ECLASS-13.0	27142305
ECLASS-15.0	27142305

### ETIM

ETIM 9.0	EC001663
----------	----------

### UNSPSC

UNSPSC 21.0	39121400
-------------	----------

Environmental product compliance

EU RoHS	
Fulfills EU RoHS substance requirements	Yes, No exemptions
China RoHS	
Environment friendly use period (EFUP)	EFUP-E
	No hazardous substances above the limits
EU REACH SVHC	
REACH candidate substance (CAS No.)	No substance above 0.1 wt%



0804039

<https://www.phoenixcontact.com/us/products/0804039>

## Accessories

### UC-TMF 16 - Marker for terminal blocks

0819262

<https://www.phoenixcontact.com/us/products/0819262>



Marker for terminal blocks, Sheet, white, unmarked, can be labeled with: BLUEMARK E.CARD, BLUEMARK ID COLOR, BLUEMARK ID, BLUEMARK CLED, PLOTMARK, CMS-P1-PLOTTER, mounting type: latching, for terminal block width: 16 mm, Number of individual labels: 32, text field height: 5.1 mm, text field width: 15.45 mm

---

### ZBF 16:UNPRINTED - Zack Marker strip, flat

0827464

<https://www.phoenixcontact.com/us/products/0827464>



Zack Marker strip, flat, Strip, white, unmarked, can be labeled with: PLOTMARK, CMS-P1-PLOTTER, mounting type: latching, for terminal block width: 16 mm, Number of individual labels: 50, text field height: 10.5 mm, text field width: 16.25 mm

## EO-CF/PT/GN - Socket

0804039

<https://www.phoenixcontact.com/us/products/0804039>

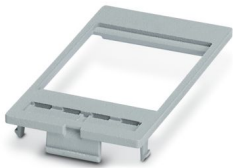


## EO-SI-FRAME - Adapter plate

0804522

<https://www.phoenixcontact.com/us/products/0804522>

Adapter plate



---

## SI-M1A - Mounting frame

1404493

<https://www.phoenixcontact.com/us/products/1404493>

Mounting frame for one front plate/socket, plastic frame: black, plastic cover: transparent, closed with 3 mm two-way key bit and rotary knob, included.



## EO-CF/PT/GN - Socket

0804039

<https://www.phoenixcontact.com/us/products/0804039>



## SI-M1B - Mounting frame

1404494

<https://www.phoenixcontact.com/us/products/1404494>

Mounting frame for two front plates/sockets, plastic frame: black, plastic cover: transparent, closed with 3 mm two-way key bit and rotary knob, included.



---

## SI-M1A-GL - Mounting frame

1407592

<https://www.phoenixcontact.com/us/products/1407592>

Mounting frame for one front plate/socket, plastic frame: black, plastic cover: gray, closed with 3 mm two-way key bit and rotary knob, included.



## EO-CF/PT/GN - Socket

0804039

<https://www.phoenixcontact.com/us/products/0804039>



## SI-M1B-GL - Mounting frame

1407593

<https://www.phoenixcontact.com/us/products/1407593>

Mounting frame for two front plates/sockets, plastic frame: black, plastic cover: gray, closed with 3 mm two-way key bit and rotary knob, included.



---

## SI-M1A-ML - Mounting frame

1407588

<https://www.phoenixcontact.com/us/products/1407588>

Mounting frame for one front plate/socket, plastic frame: black, plastic cover: metallic, closed with 3 mm two-way key bit and rotary knob, included.



## EO-CF/PT/GN - Socket

0804039

<https://www.phoenixcontact.com/us/products/0804039>



## SI-M1B-ML - Mounting frame

1407589

<https://www.phoenixcontact.com/us/products/1407589>

Mounting frame for two front plates/sockets, plastic frame: black, plastic cover: metallic, closed with 3 mm two-way key bit and rotary knob, included.



---

## VS-SI-EB-EMV-1 - Mounting frame

1656482

<https://www.phoenixcontact.com/us/products/1656482>

Mounting frame, for one front plate or socket, metal frame, matt nickel-plated, electrically conductive, transparent cover



# EO-CF/PT/GN - Socket

0804039

<https://www.phoenixcontact.com/us/products/0804039>



## VS-SI-EB-EMV-2 - Mounting frame

1656495

<https://www.phoenixcontact.com/us/products/1656495>

Mounting frame, for two front plates or sockets, metal frame, matt nickel-plated, electrically conductive, transparent cover



---

Phoenix Contact 2025 © - all rights reserved

<https://www.phoenixcontact.com>

Phoenix Contact USA  
586 Fulling Mill Road  
Middletown, PA 17057, United States  
(+717) 944-1300  
[info@phoenixcon.com](mailto:info@phoenixcon.com)