

**Product number CA11353\_LAURA-RS**

Family	Laura	FWHM	12 degrees
Type	Assembly	Efficiency	89 %
LED	H35C1 (LEMWA33)	cd/Im	19.700
Color	Black	Gerber File	Available
Diameter	21.6 x 21.6 mm		
Height	13.1 mm		
Style	Square		
Optic Material	PMMA		
Holder Material	-		
Fastening	["tape"]		
Status	Production ready		

**Product number CA11643\_LAURA-SS**

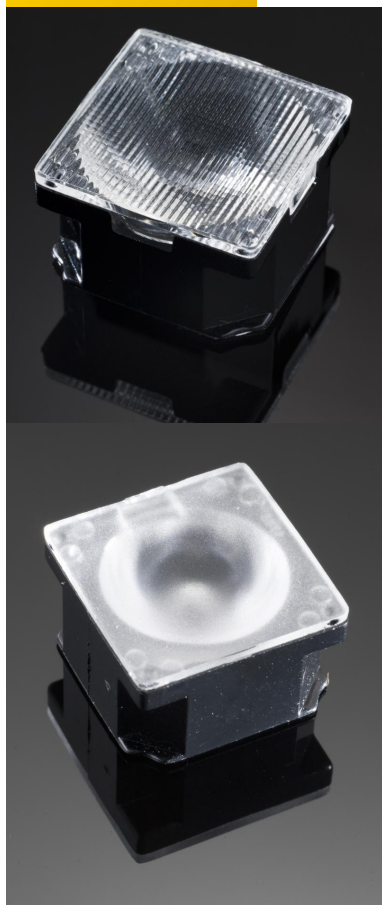
Family	Laura	FWHM	13 degrees
Type	Assembly	Efficiency	88 %
LED	H35C1 (LEMWA33)	cd/Im	13.300
Color	Black	Gerber File	Available
Diameter	21.6 x 21.6 mm		
Height	13.1 mm		
Style	Square		
Optic Material	PMMA		
Holder Material	-		
Fastening	["tape"]		
Status	Production ready		

**Product number CA11360\_LAURA-D**

Family	Laura	FWHM	19 degrees
Type	Assembly	Efficiency	86 %
LED	H35C1 (LEMWA33)	cd/Im	5.000
Color	Black	Gerber File	Available
Diameter	21.6 x 21.6 mm		
Height	13.1 mm		
Style	Square		
Optic Material	PMMA		
Holder Material	-		
Fastening	["tape"]		
Status	Production ready		

**Product number CA11355\_LAURA-M**

Family	Laura	FWHM	33 degrees
Type	Assembly	Efficiency	82 %
LED	H35C1 (LEMWA33)	cd/Im	2.300
Color	Black	Gerber File	Available
Diameter	21.6 x 21.6 mm		
Height	13.1 mm		
Style	Square		
Optic Material	PMMA		
Holder Material	-		
Fastening	["tape"]		
Status	Production ready		

**Product number CA11365\_LAURA-O**

Family	Laura	FWHM	39+14 degrees
Type	Assembly	Efficiency	86 %
LED	H35C1 (LEMWA33)	cd/Im	4.600
Color	Black	Gerber File	Available
Diameter	21.6 x 21.6 mm		
Height	13.1 mm		
Style	Square		
Optic Material	PMMA		
Holder Material	-		
Fastening	["tape"]		
Status	Production ready		

**Product number CA11766\_LAURA-WW**

Family	Laura	FWHM	68 degrees
Type	Assembly	Efficiency	83 %
LED	H35C1 (LEMWA33)	cd/Im	0.800
Color	Black	Gerber File	Available
Diameter	21.6 x 21.6 mm		
Height	13.1 mm		
Style	Square		
Optic Material	PMMA		
Holder Material	-		
Fastening	["tape"]		
Status	Production ready		

**NOTE: The typical divergence will be changed by different color, chip size and chip position tolerance. The typical total divergence is the full angle measured where the luminous intensity is half of the peak value.**



## PRODUCT DATASHEET

### Laura series

last update 10/11/2016

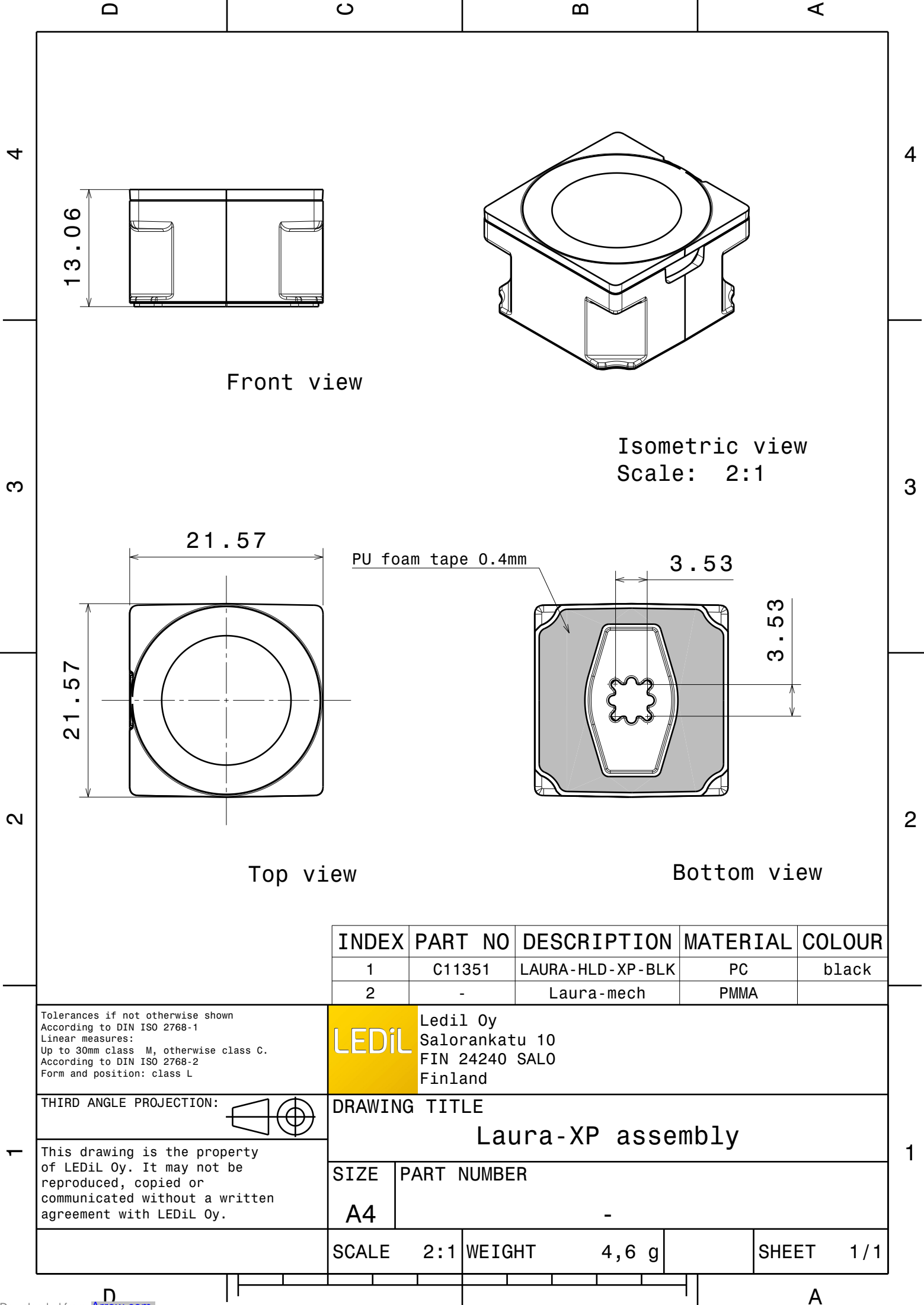
#### GENERAL INFORMATION

- Product series especially designed & optimized for H35C1 (LEMWA33) series of LEDs.
- Special care taken to make light distribution as uniform as possible.
- Lens material optical grade PMMA with high UV and temperature resistance. Allows use of high current and temperature conditions.

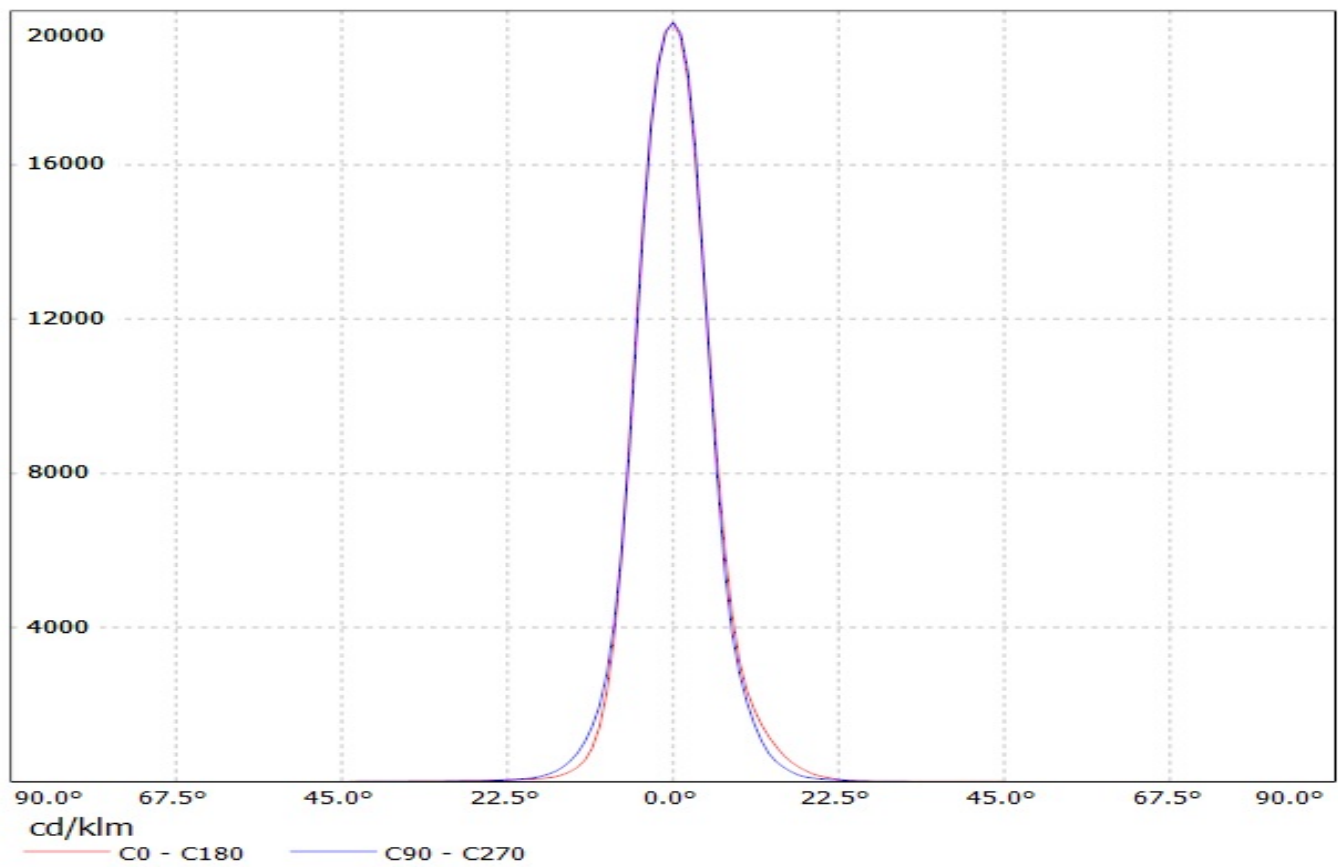
Please find more information about used material from below:

[http://ledil.fi/sites/default/files/Documents/Technical/Material/PMMA%20N%20UL94\\_Yellow%20Card.pdf](http://ledil.fi/sites/default/files/Documents/Technical/Material/PMMA%20N%20UL94_Yellow%20Card.pdf)

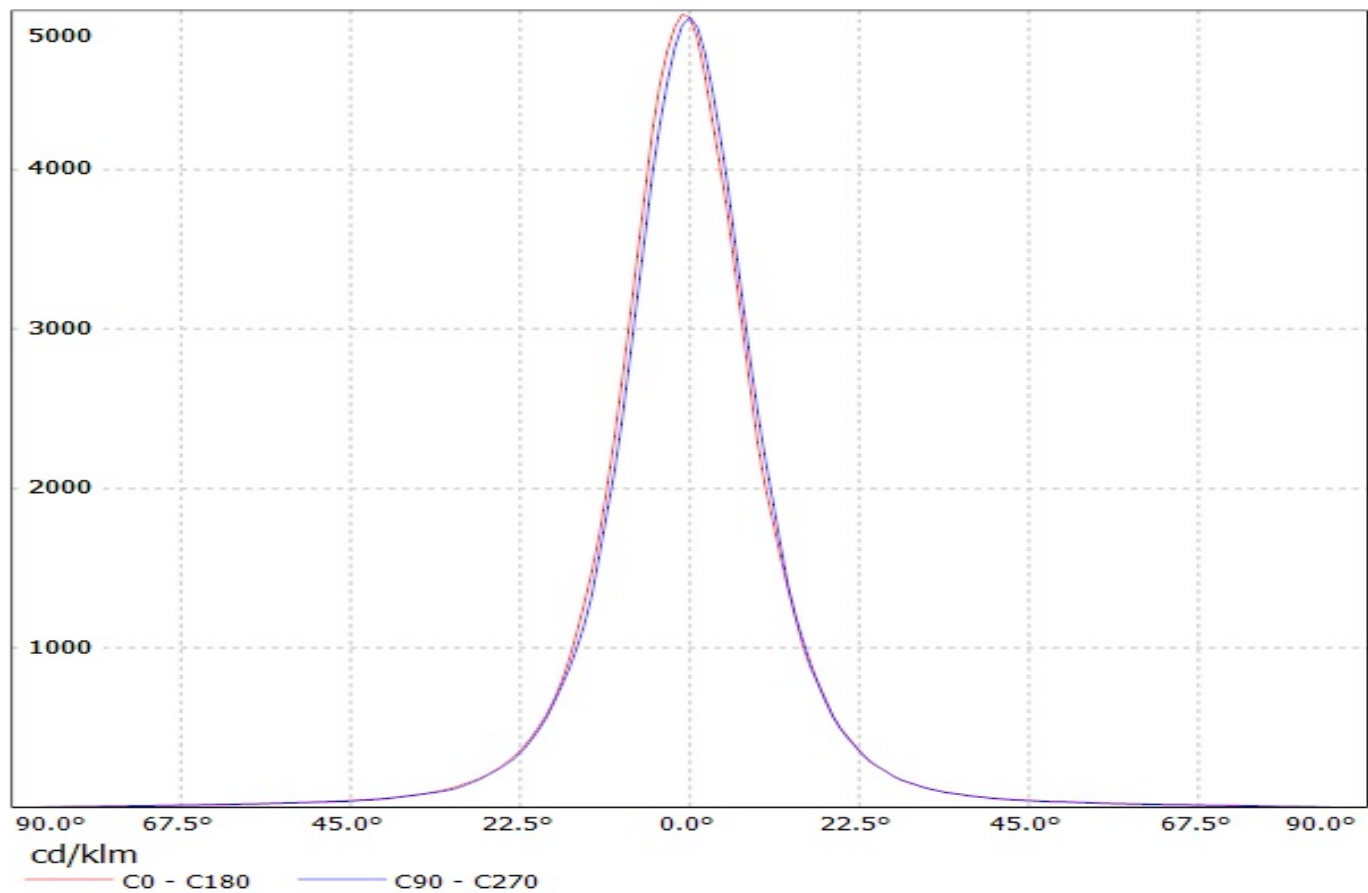
<http://ledil.fi/sites/default/files/Documents/Technical/Material/PMMA%20N%20PLEXIGLAS-Datasheet.pdf>



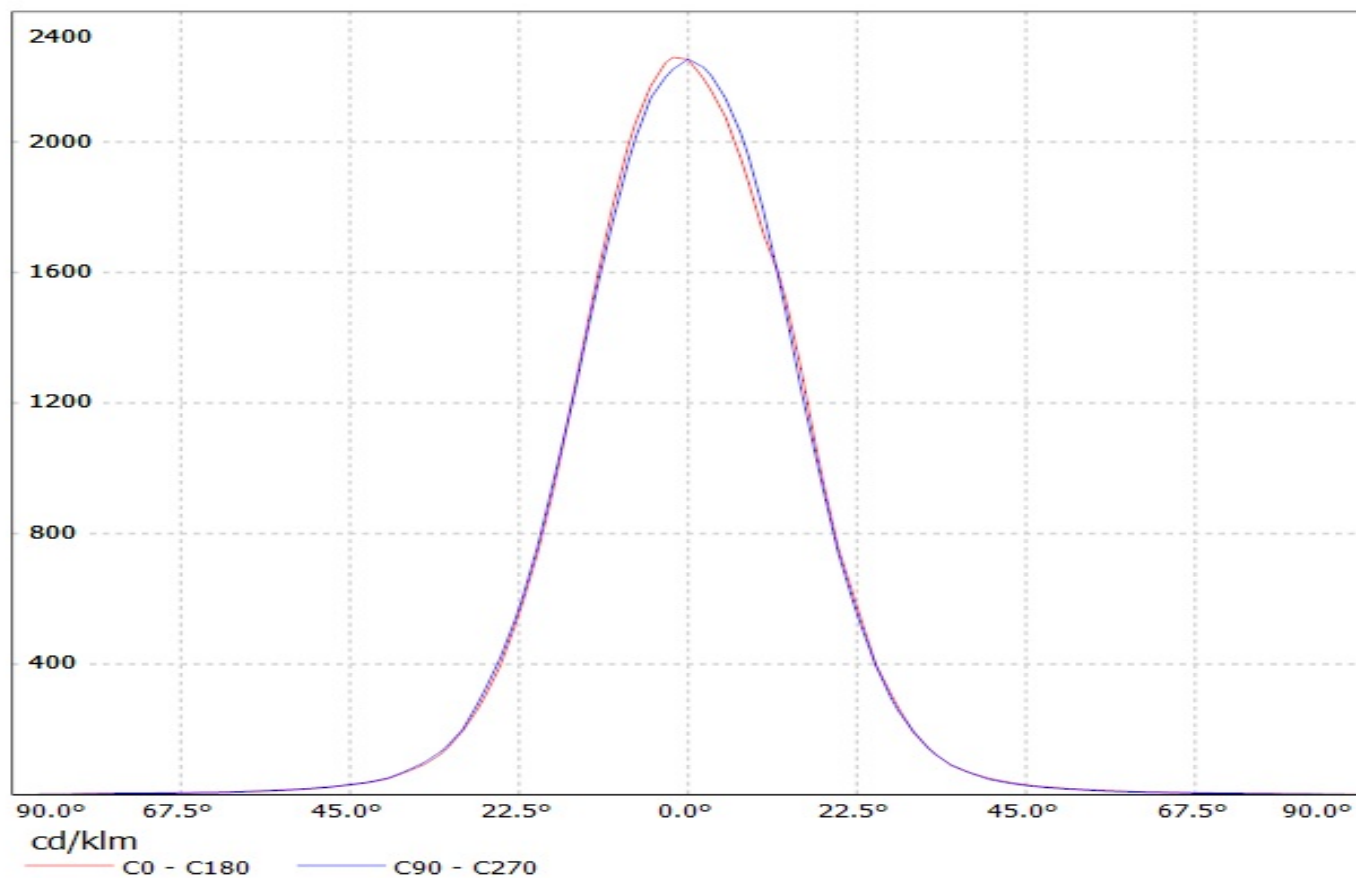
Luminaire: Ledil Oy CA11353\_LAURA-RS\_(3535\_Ceramic\_gen2) Efficiency=89%  
Lamps: 1 x LG 3535 Ceramic gen2 (PKG5700K) 116lm @ 250mA CCT=6200K P=0.7W I=250mA



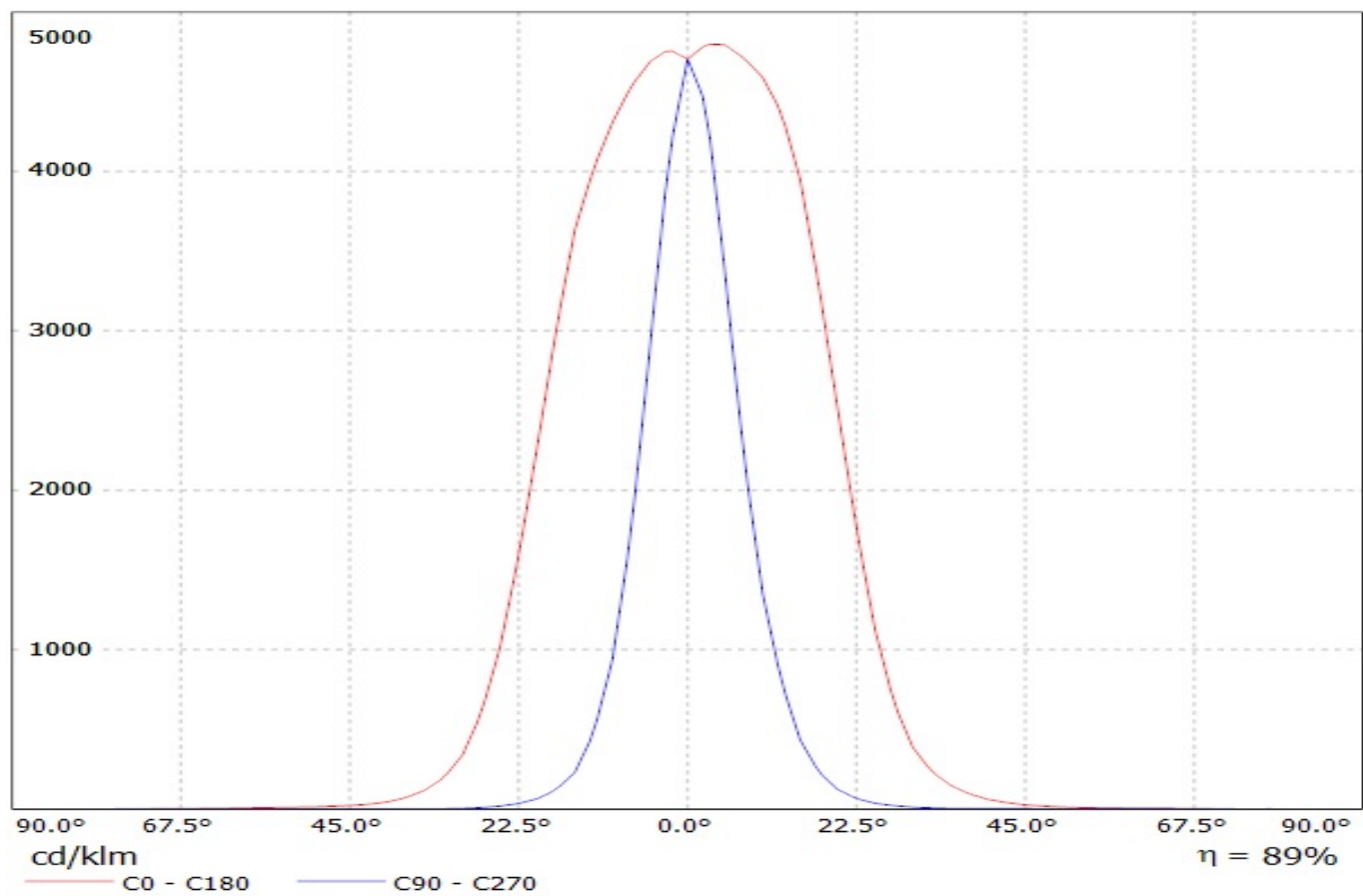
Luminaire: Ledil Oy CA11360\_LAURA-D\_(3535\_Ceramic\_gen2) Efficiency=86%  
Lamps: 1 x LG 3535 Ceramic gen2 (PKG5700K) 116lm @ 250mA CCT=6200K P=0.7W I=250mA



Luminaire: Ledil Oy CA11355\_LAURA-M (3535\_Ceramic\_gen2) Efficiency=82%  
Lamps: 1 x LG 3535 Ceramic gen2 (PKG5700K) 116lm @ 250mA CCT=6200K P=0.7W I=250mA

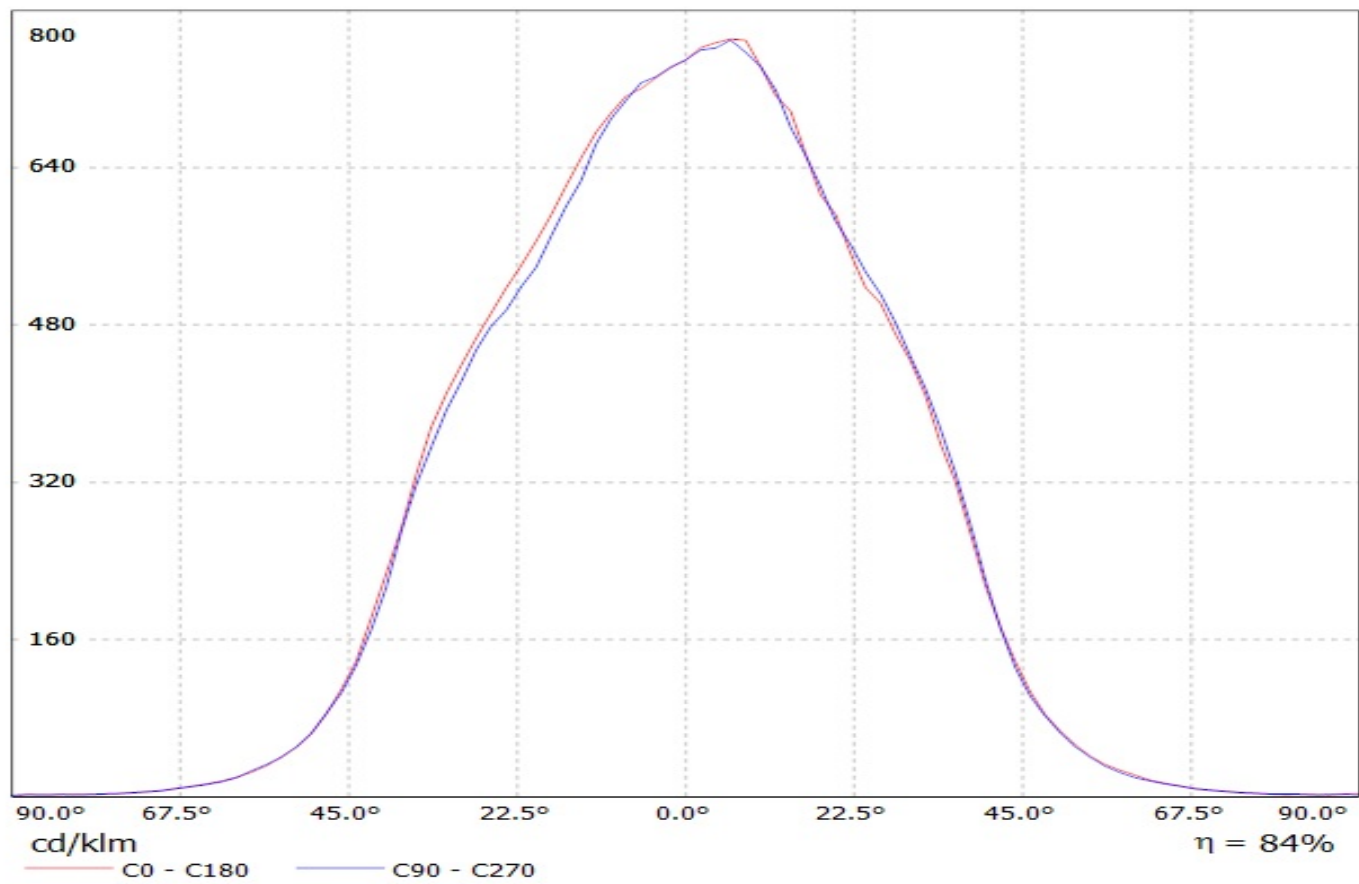


Luminaire: LEDil Oy CA11365\_LAURA-O\_(3535\_Ceramic\_gen2) Efficiency=88%  
Lamps: 1 x LG 3535 Ceramic gen2 (PKG5700K) 116lm @ 250mA CCT=6200K P=0.7W I=250mA

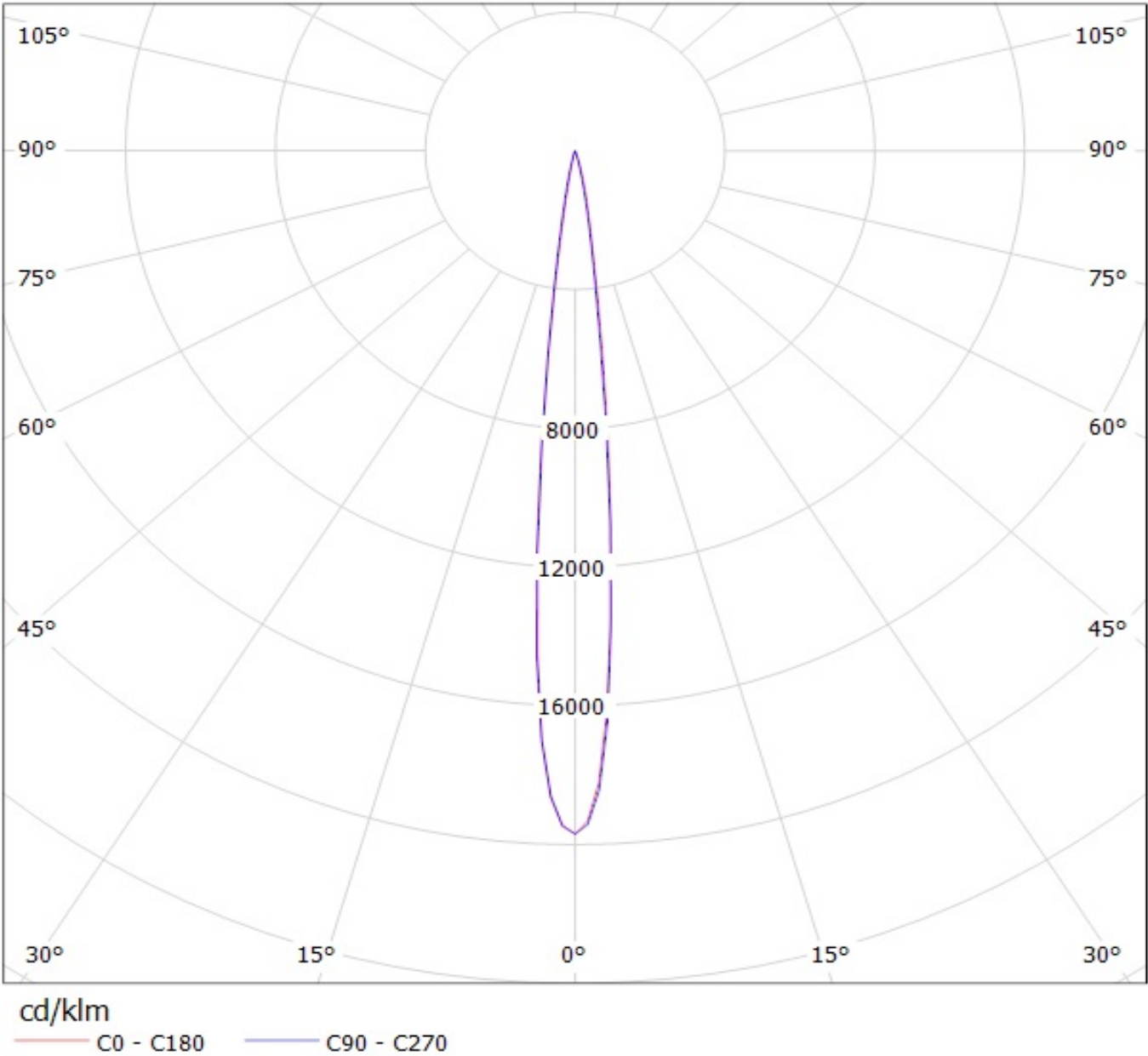




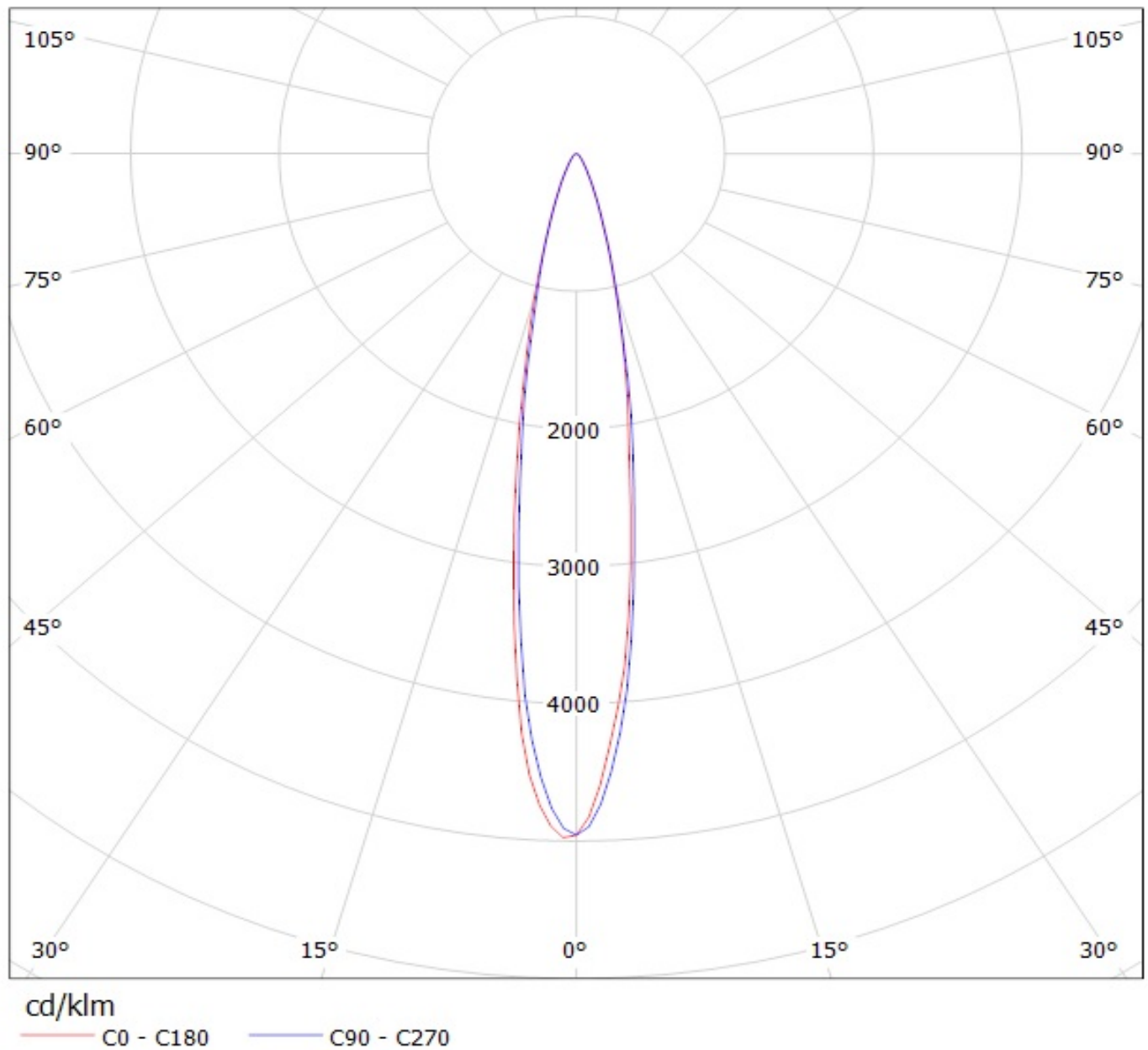
Luminaire: Ledil Oy CA11766\_LAURA-WW\_(3535\_Ceramic\_gen2) Efficiency=83%  
Lamps: 1 x LG 3535 Ceramic gen2 (PKG5700K) 116lm @ 250mA CCT=6200K P=0.7 I=250mA



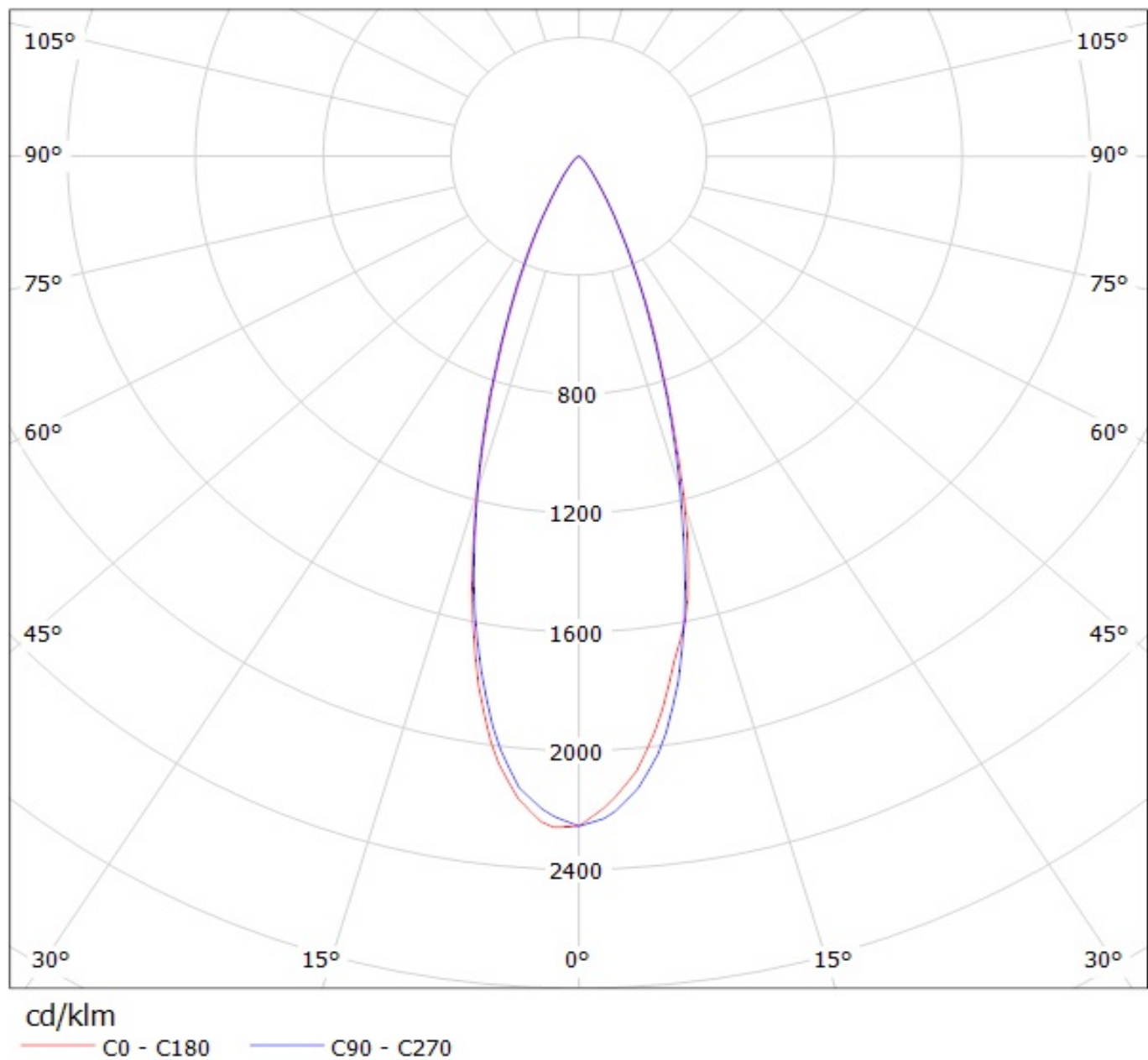
Luminaire: Ledil Oy CA11353\_LAURA-RS\_(3535\_Ceramic\_gen2) Efficiency=89%  
Lamps: 1 x LG 3535 Ceramic gen2 (PKG5700K) 116lm @ 250mA CCT=6200K P=0.7W I=250mA



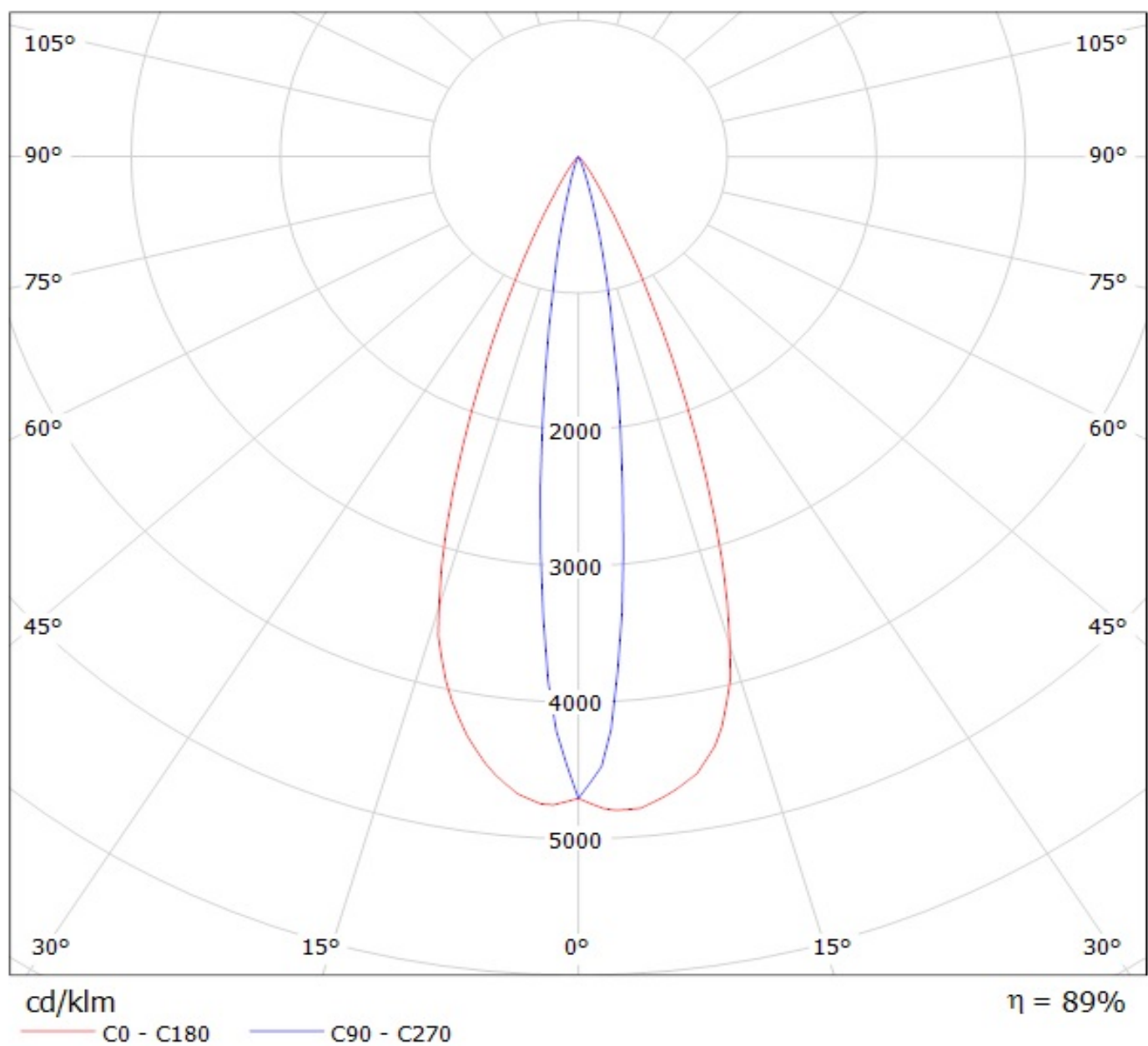
Luminaire: Ledil Oy CA11360\_LAURA-D\_(3535\_Ceramic\_gen2) Efficiency=86%  
Lamps: 1 x LG 3535 Ceramic gen2 (PKG5700K) 116lm @ 250mA CCT=6200K P=0.7W I=250mA



Luminaire: Ledil Oy CA11355\_LAURA-M\_(3535\_Ceramic\_gen2) Efficiency=82%  
Lamps: 1 x LG 3535 Ceramic gen2 (PKG5700K) 116lm @ 250mA CCT=6200K P=0.7W I=250mA



Luminaire: LEDil Oy CA11365\_LAURA-O\_(3535\_Ceramic\_gen2) Efficiency=88%  
Lamps: 1 x LG 3535 Ceramic gen2 (PKG5700K) 116lm @ 250mA CCT=6200K P=0.7W I=250mA



Luminaire: Ledil Oy CA11766\_LAURA-WW\_(3535\_Ceramic\_gen2) Efficiency=83%  
Lamps: 1 x LG 3535 Ceramic gen2 (PKG5700K) 116lm @ 250mA CCT=6200K P=0.7 I=250mA

