

| | | | | | | | | |
|-------------|----------------|---------|-------------|---------------------------------------|------------|------------|----------------|------------------|
| mat'l. code | - | surface | ✓ | tolerance | ASME_Y14.5 | projection | product family | PCI_EXPRESS |
| ltr | ecn no | dr | date | tolerances unless otherwise specified | | MM | title | MINI_PCI_EXPRESS |
| | | | | angles | Linear | scale N/A | | 9.0_HEIGHT |
| | | | | ±2' | | | | |
| | | dr | WINSTON_ZHU | 2020-05-15 | | | dwg no | 10152049 |
| | | enr | ZHENHUA_LIU | 2020-05-15 | | | sheet 1 of 5 | size |
| | | chr | | | | | | A4 |
| | | app | HEAVEN_CEN | 2020-05-15 | | | type | CUSTOMER Drawing |
| sheet index | revision sheet | A | | | | | | |

NOTES:

1. MATERIAL:

HOUSING: HIGH TEMPERATURE PLASTIC, UL94 V-0, BLACK COLOR,

CONTACTS: COPPER ALLOY

PEGS: COPPER ALLOY

2. FINISH:

CONTACTS: SELECTED GOLD PLATING ON THE CONTACT AREA,

1u" GOLD PLATING ON THE SOLDER TAILS,

50u" NICKEL UNDERPLATING OVER ALL.

PEGS: 120u" MATTE-TIN OVER 50u" . NICKEL.

3. PRODUCT SPECIFICATION: GS-12-1513

4. CARD THICKNESS APPLIES ACROSS TABS AND INCLUDES PLATING AND/OR METALLIZATION.

5. EDGE BEVEL MUST BE PRESENT AND FREE OF CUTTING BURRS FROM PCB AND CONTACT MATERIALS.

6. THE HOUSING WILL WITHSTAND EXPOSURE TO 260°C PEAK TEMPERATURE FOR
10 SECONDS IN RE-FLOW APPLICATION.

PRODUCT NUMBER CODE

10152049- 052 R X LF

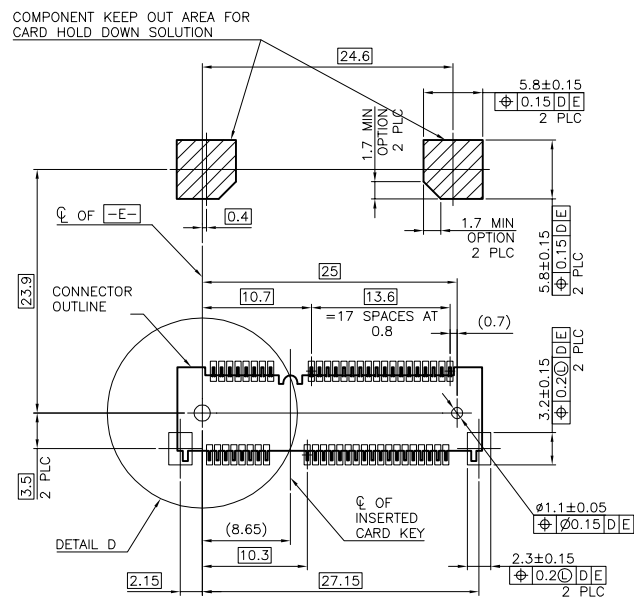
52 CONTACTS

PACKING OPTIONS
R: TAPE & REEL

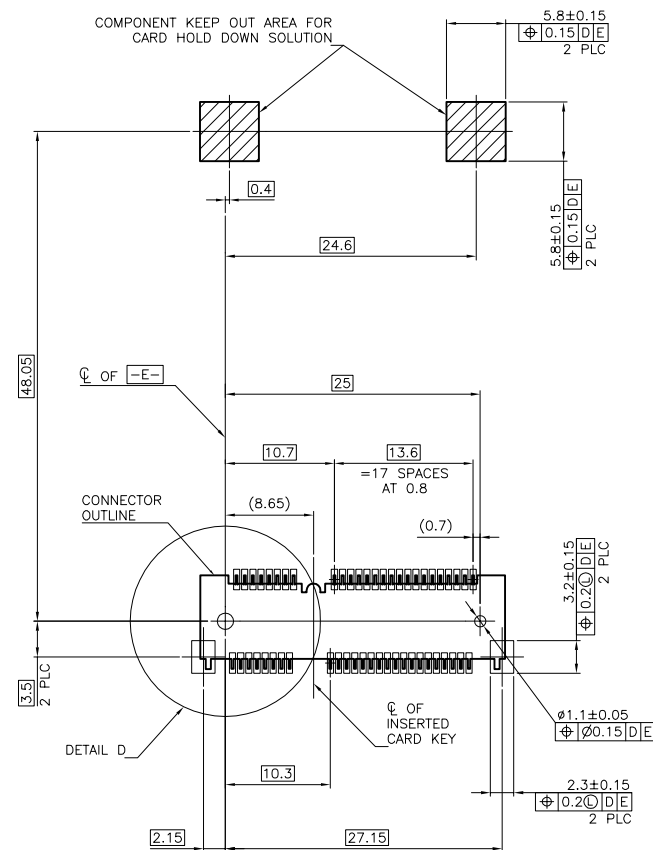
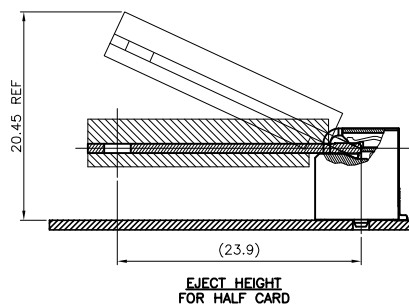
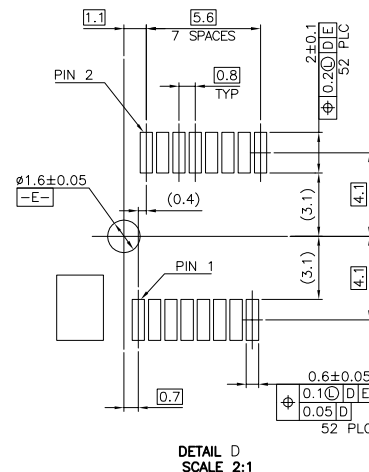
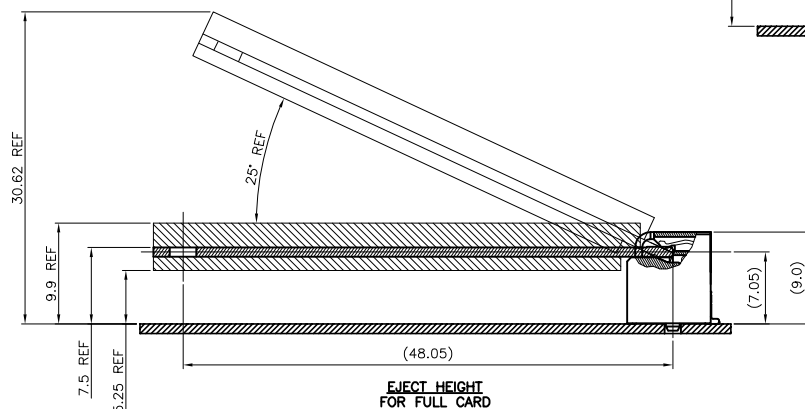
LEAD FREE

CONTACT AREA PLATING
0: 30u" GOLD
1: 10u" GOLD
2: GOLD FLASH

| | | | | | | | | | | |
|------------------|----------------|----|------|---------------------------------------|-------------------------|-----------------|-------------------------------|--|------------------|------|
| mat'l. code - | | | | surface - ✓ | tolerance ASME_Y14.5 | projection | product family PCI_EXPRESS | | | |
| lfr | ecn no | dr | date | tolerances unless otherwise specified | | | title | | | |
| | | | | angles | linear .0±0.30 | MM | MINI_PCI_EXPRESS | | | |
| | | | | | .00±0.20 | scale N/A | 9.0MM_HEIGHT | | | |
| | | | | ±2' | .000±0.10 | | | | | |
| | | | | dr | WINSTON_ZHU 2020-05-15 | Amphenol FCI | dwg no | | sheet 2 of 5 | size |
| | | | | engr | ZHENHUA_LIU 2020-05-15 | | 10152049 | | | A4 |
| | | | | chr | | | | | | |
| | | | | appd | HEAVEN_CEN 2020-05-15 | | type | | CUSTOMER Drawing | |
| sheet index | revision sheet | A | | | | | | | | |

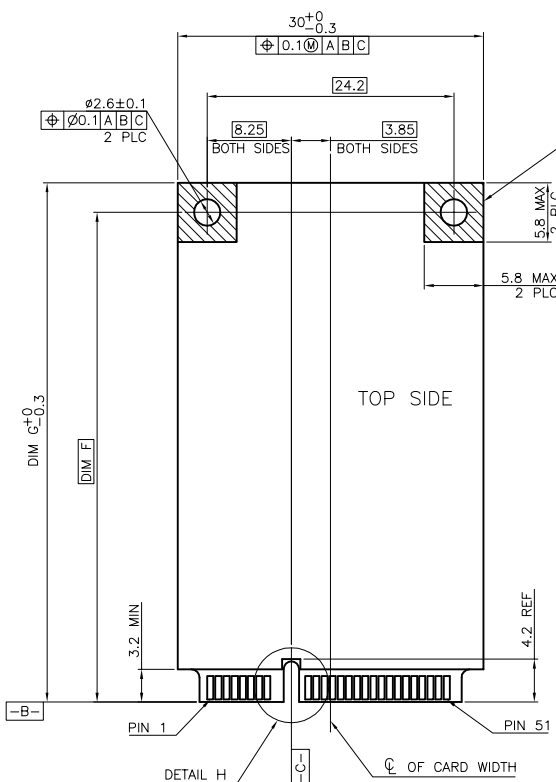


-D- IS THE TOP SURFACE OF PCB.
RECOMMENDED P.C. BOARD PATTERN LAYOUT
FOR HALF CARD CONNECTOR
(TOP VIEW)



-D- IS THE TOP SURFACE OF PCB.
RECOMMENDED P.C. BOARD PATTERN LAYOUT
FOR FULL CARD CONNECTOR
(TOP VIEW)

| | | | | | | | | |
|-------------|----------|---------|-------------|---------------------------------------|-----------------------------------|--------------|----------------|------------------|
| mat'l. code | - | surface | ✓ | tolerance | ASME_Y14.5 | projection | product family | PCI_EXPRESS |
| ltr | ecn no | dr | date | tolerances unless otherwise specified | | MM | title | MINI_PCI_EXPRESS |
| | | | | angles | Linegr | scale N/A | | 9.0_HEIGHT |
| | | | | ±2' | .02±0.30 .00±0.20 .000±0.10 | | dwg no | 10152049 |
| | | dr | WINSTON_ZHU | 2020-05-15 | | Amphenol FCI | sheet 3 of 5 | size A4 |
| | | engr | ZHENHUA_LIU | 2020-05-15 | | | | |
| | | chr | | | | | | |
| | | appd | HEAVEN_CEN | 2020-05-15 | | | type | CUSTOMER Drawing |
| sheet index | revision | A | | | | | | |



COMPONENT AND ROUTING (ALL LAYERS)
KEEP OUT AREA FOR HOLD DOWN SOLUTIONS

| DIM F | DIM G | |
|-------|-------|----------------|
| 48.05 | 50.95 | FULL-MINI CARD |
| 23.9 | 26.8 | HALF-MINI CARD |

PIN NUMBERING REFERENCE:
ODD PINS-TOP SIDE
EVEN PINS-BOTTOM SIDE

2.4 MAX

1.35 MAX

HATCHED AREAS ILLUSTRATE
MAXIMUM AVAILABLE
COMPONENT VOLUME

Φ OF CARD WIDTH

BOTTOM SIDE

OPTION 1

PIN 52

RO.8 MAX 2 PLC

13.6 BOTH SIDES

5.6 BOTH SIDES

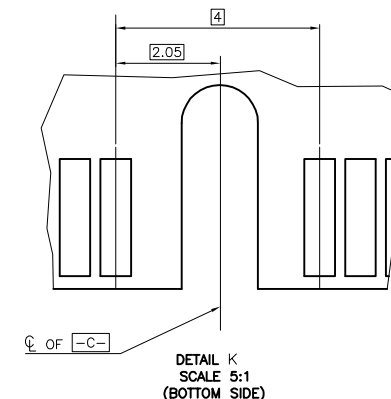
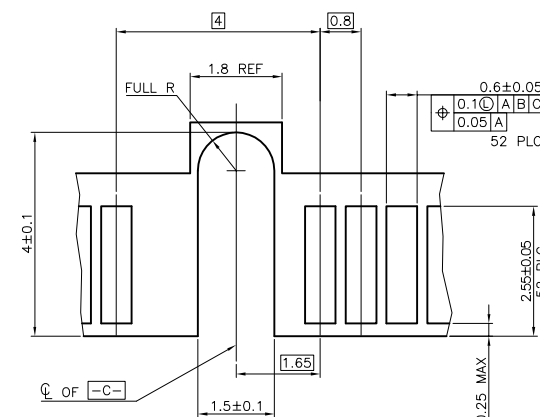
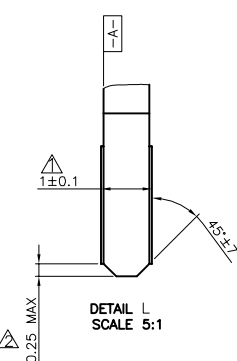
3.2 MIN 2 PLC

25.7 ± 0.15
Φ 0.1 (A) (B) (C)

(2.15) 2 PLC

DETAIL K

PIN 2



NOTES:

⚠ CARD THICKNESS APPLIES ACROSS TABS AND INCLUDES
PLATING AND/OR METALLIZATION.

⚠ EDGE BEVEL MUST BE PRESENT AND FREE OF CUTTING
BURRS FROM PCB AND CONTACT MATERIALS.

FOR PCI EXPRESS MINI CARD

| | | | | | | | | |
|-------------|----------|---------|--------------|---------------------------------------|--|------------|----------------|------------------|
| mat'l. code | - | surface | ✓ ASME_Y14.5 | tolerance | ASME_Y14.5 | projection | product family | PCI_EXPRESS |
| lfr | ecn no | dr | date | tolerances unless otherwise specified | | MM | title | MINI_PCI_EXPRESS |
| 18 | | | | angles | Line 1: .02 ± 0.30 Line 2: .00 ± 0.20 Line 3: ± 2' .000 ± 0.10 | scale N/A | 9.0_HEIGHT | |
| | | dr | WINSTON_ZHU | 2020-05-15 | | | dwg no | 10152049 |
| | | engr | ZHENHUA_LIU | 2020-05-15 | | | sheet 4 of 5 | size A4 |
| | | chr | | | | | | |
| | | appd | HEAVEN_CEN | 2020-05-15 | | | | |
| sheet index | revision | A | | | | | type | CUSTOMER Drawing |

