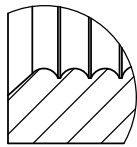
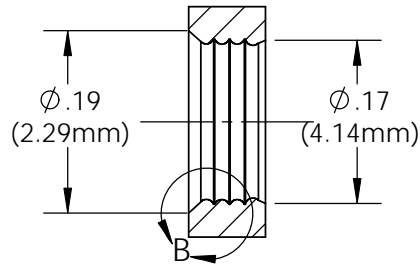
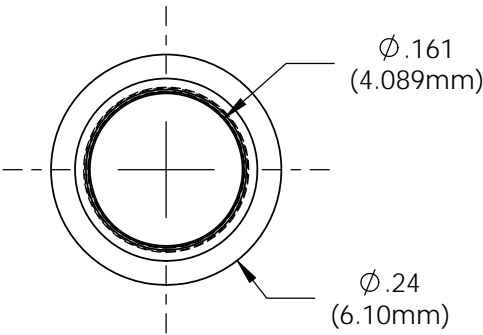
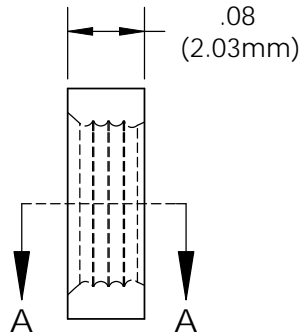


NOTES:

1. FINISH: Parts shall have a smooth appearance, min. 600 surface finish, with no gates and all flash removed
2. U.S. & Foreign Pat. Issued & Pend.

REVISIONS				
ECN #	REV	DESCRIPTION	DATE	INITIALS
	N/A	INITIAL RELEASE	10/25/85	JS
	001	REVISED PER ECR111009AZ01	2/8/10	KH
145	002	CHANGE IN MATERIAL	7/12/10	KH

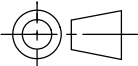
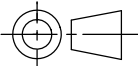


DETAIL B
SCALE 10 : 1



ISOMETRIC VIEW

SECTION A-A

UNLESS OTHERWISE SPECIFIED DIMENSIONS ARE IN INCHES: ANGLES DECIMALS ± 1' .X ±.020 .XX ±.010 FINISH .XXX ±.005 BREAK ALL CORNERS AND SHARP EDGES .030 MAX  THIRD ANGLE PROJECTION PROPRIETARY AND CONFIDENTIAL THE INFORMATION CONTAINED IN THIS DRAWING IS THE SOLE PROPERTY OF VISUAL COMMUNICATIONS COMPANY, INC. ANY REPRODUCTION IN PART OR AS A WHOLE WITHOUT THE WRITTEN PERMISSION OF VISUAL COMMUNICATIONS COMPANY, INC. IS PROHIBITED.		MATERIAL POLYPROPYLENE, BLACK		VISUAL COMMUNICATIONS COMPANY 190 Bosstick Boulevard, Suite 101 San Marcos, CA 92069 USA Phone (760) 560-1300 Fax (760) 560-1301 email vccsales@vcclite.com		
 THIRD ANGLE PROJECTION		FINISH SEE NOTES		TITLE: CLIPLITE RNG 132		
		APPROVALS		DATE		SIZE A
		DRAWN K.HOWARD		2/8/10		
		CHECKED DPZ		2/22/10		DWG. NO. RNG 132
DO NOT SCALE DRAWING				SCALE: 5:1		REV 002
						SHEET 1 OF 1