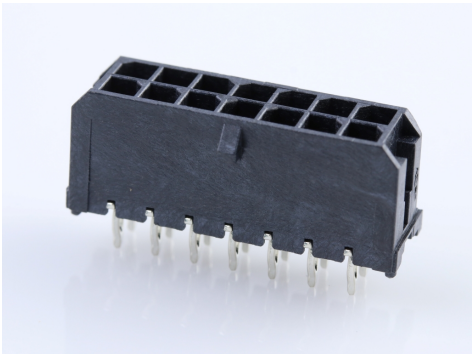




**Part Number :** [449141401](#)  
**Product Description :** Micro-Fit CPI Header, Compliant Pin Interface, Dual Row, Vertical, 14 Circuits, Tin (Sn) Plating, Glow-Wire Capable  
**Series Number :** 44914  
**Status :** Active  
**Product Category :** PCB Headers and Receptacles



Documents & Resources

**Drawings**  
[449141401\\_sd.pdf](#)  
[PK-70873-0314-001.pdf](#)

**3D Models and Design Files**  
[449141401\\_stp.zip](#)  
[SYM-44914-1401-001.zip](#)

**Specifications**  
[430450001-PS-KO-000.pdf](#)  
[430450001-PS-SP-000.pdf](#)  
[PS-43045-001.pdf](#)  
[430450007-TS-000.pdf](#)  
[TS-43045-001-001.pdf](#)  
[TS-43045-002-001.pdf](#)  
[TS-46235-001-001.pdf](#)

Product Environment Compliance

Compliance

GADSL/IMDS	Not Relevant
China RoHS	
EU ELV	Not Relevant
Low-Halogen Status	Low-Halogen per IEC 61249-2-21
REACH SVHC	Not Contained per D(2024)6225-DC (07 Nov 2024)
EU RoHS	Compliant per EU 2015/863

## Multiple Part Product Compliance Statements

- Eu RoHS
- REACH SVHC
- Low-Halogen

## Multiple Part Industry Compliance Documents

- IPC 1752A Class C
- IPC 1752A Class D
- Molex Product Compliance Declaration
- IEC-62474
- chemSHERPA (xml)

## EU RoHS Certificate of Compliance

---

### Part Details

#### General

Status	Active
Category	PCB Headers and Receptacles
Series	44914
Description	Micro-Fit CPI Header, Compliant Pin Interface, Dual Row, Vertical, 14 Circuits, Tin (Sn) Plating, Glow-Wire Capable
Application	Power, Wire-to-Board

Comments	High Temperature, Square Pin; This Molex product is manufactured from material that has the following ratings, tested by independent agencies: a) A Glow Wire Ignition Temperature (GWIT) of at least 775 deg C per IEC 60695-2-13. b) A Glow Wire Flammability Index (GWFI) above 850 deg C per IEC 60695-2-12 and hence complies with the requirements set out in the International Standard IEC 60335-1 5th edition - household and similar electrical appliances - safety, section 30 Resistance to heat and fire. The customers using this product must determine its suitability for use in their particular application through testing or other acceptable means as described in end-product glow-wire flammability test standard IEC 60695-2-11 and any applicable product end-use standard(s). If it is determined during the customer's evaluation of suitability, that higher performance is required, please contact Molex for possible product options.
Component Type	PCB Header
Product Name	Micro-Fit CPI
UPC	756054636794

#### Agency

CSA	LR19980
UL	E29179

#### Electrical

Current - Maximum per Contact	8.5A
Voltage - Maximum	600V

#### Physical

Breakaway	No
Circuits (Loaded)	14
Circuits (maximum)	14
Color - Resin	Black
Durability (mating cycles max)	30

Flammability	94V-0
Glow-Wire Capable	Yes
Material - Metal	High Performance Alloy (HPA)
Material - Plating Mating	Tin
Material - Plating Termination	Tin
Material - Resin	High Temperature Thermoplastic
Net Weight	1.930/g
Number of Rows	2
Orientation	Vertical
Packaging Type	Tray
PCB Locator	Yes
PCB Retention	Yes
Pitch - Mating Interface	3.00mm
Plating min - Mating	5.080µm
Plating min - Termination	5.080µm
Polarized to PCB	Yes
Shrouded	Fully
Stackable	No
Temperature Range - Operating	-40° to +105°C
Termination Interface Style	Through Hole - Compliant Pin

## Solder Process Data

Lead-Free Process Capability	N/A
------------------------------	-----

---

## Mates With / Use With

### Mates with Part(s)

Description	Part Number
Micro-Fit 3.0 Receptacle Housing, Dual Row, 14 Circuits, UL 94V-0, Low-Halogen, Black	<u>430251400</u>

---

## Application Tooling

### Global

Description	Part Number
-------------	-------------

Removal Tool	<u>622030455</u>
--------------	------------------

---

This document was generated on Mar 12, 2025