



Part Number : [15975021](#)

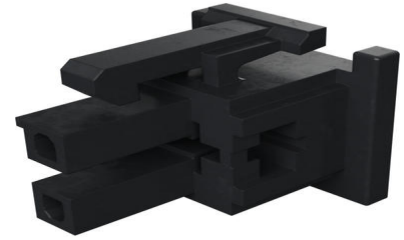
Product Description : Mini-Fit TPA Receptacle Housing, 4.20mm Pitch, Dual Row, 2 Circuits, Black

Series Number : 30067

Status : Active

Product Category : Connector Housings

Engineering Part Number : 30067-02A2



Documents and Resources

Drawings

[015975021_sd.pdf](#)

[STEP AP242](#)

[SOLIDWORKS](#)

[Creo](#)

Specifications

[PK-30067-001-001.pdf](#)


[PS-45750-001-001.pdf](#)

[PS-5556-003-001.pdf](#)

[TS-30067-001-001.pdf](#)

Product Environment Compliance

Compliance

GADSL/IMDS	Not Relevant
China RoHS	 per SJ/T 11365-2006
EU ELV	Not Relevant
Low-Halogen Status	Not Low-Halogen per IEC 61249-2-21
REACH SVHC	Not Contained per D(2025)6375-DC (05 Nov 2025)
EU RoHS	Compliant per EU 2015/863

[Compliance Statements](#)

- EU RoHS
- REACH SVHC
- Low-Halogen

Industry Documents

- IPC 1752A Class C
- IPC 1752A Class D
- Molex Product Compliance Declaration
- IEC-62474
- chemSHERPA (xml)

Substances of Interest

- PFAS

EU RoHS Certificate of Compliance

Additional Product Compliance Information

Part Details

General

Status	Active
Category	Connector Housings
Series	30067
Description	Mini-Fit TPA Receptacle Housing, 4.20mm Pitch, Dual Row, 2 Circuits, Black
Application	Power, Wire-to-Board, Wire-to-Wire
Comments	Current = 13A max. per circuit when header is mated to a receptacle loaded with 45750 series terminals crimped to 16 AWG wire. See Molex product specification PS-45750-001 for additional current derating information. Connector Position Assurance
Product Name	Mini-Fit TPA
UPC	800754202008

Agency

CSA	LR19980
UL	E29179

Physical

Circuits (maximum)	2
Color - Resin	Black
Flammability	94V-0
Gender	Receptacle
Glow-Wire Capable	No
Keying to Mating Part	None
Lock to Mating Part	Yes
Material - Resin	Polyester
Net Weight	1.560/g
Number of Rows	2
Packaging Type	Bag
Panel Mount	No
Pitch - Mating Interface	4.20mm
Stackable	No
Temperature Range - Operating	-40° to +105°C

Solder Process Data

Lead-Free Process Capability	N/A
------------------------------	-----

Mates With / Use With

Mates with Part(s)

Description	Part Number
Mini-Fit TPA Dual Row Vertical Headers	<u>30069</u>
Mini-Fit TPA Dual Row Right-Angle Headers	<u>30070</u>

Use with Part(s)

Description	Part Number
Mini-Fit TPA Keys	<u>30072</u>
Mini-Fit Connector Position Assurance Key	<u>30071</u>
Mini-Fit Female Crimp Terminals	<u>5556</u>

Mini-Fit Plus Female Crimp Terminals	<u>45750</u>
---	--------------

This document was generated on Dec 29, 2025