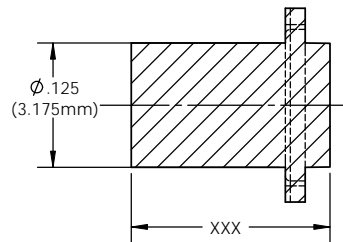
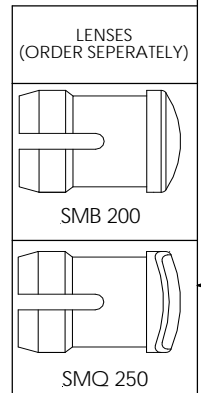
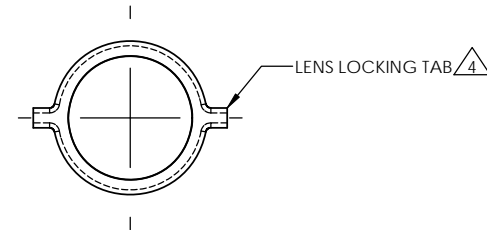
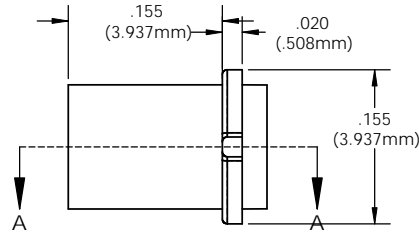


**NOTES:**

- DESIGN: Lens mounts the Litepipe securely to display panel providing 180° viewing angle
- MOUNTING: Panel mounting hole .171 (4.3mm) on 1/4" centers
- PANEL THICKNESS: For SMB 200 & SMQ 250: 1/32" to 1/8"
- LENS LOCK: Insert Litepipe into lens aligning the tabs with the lens slot
- Standoff used to adjust the height of a standard LED above the PCB and maintain a maximum .050" clearance between the Litepipe and LED.
- Length is from front of panel to LED
- Custom lengths available upon request (Minimum order quantity may apply)
- U.S. & Foreign Pat. Issued & Pend.

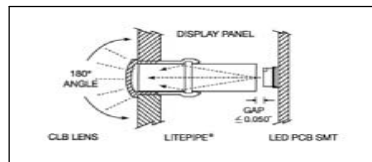



SECTION A-A

ORDERING CODE: **LSV XXX CTP**

LENGTH CODE		COLOR	
020	=.200"	CTP	CLEAR
040	.400		
060	.600		
080	.800		
100	1.000		
120	1.200		

CUSTOM LENGTHS  
AVAILABLE UPON  
REQUEST  
(SEE NOTE 7)



UNLESS OTHERWISE SPECIFIED DIMENSIONS ARE IN INCHES		MATERIAL		VISUAL COMMUNICATIONS COMPANY, INC.		
ANGLES	DECIMALS	ACRYLIC (OPTICAL GRADE)		190 Bosstick Boulevard, Suite101 San Marcos, CA 92069 USA		
±1°	.X ±.020	U.L. 94-HB		Phone (760) 560-1300 Fax (760) 560-1301 email vccsales@vccite.com		
FINISH	.XXX ±.010	FINISH		TITLE:		
	.XXX ±.005	SEE NOTES		3MM ROUND LITEPIPE		
BREAK ALL CORNERS AND SHARP EDGES (SEE 3RD)		APPROVAL		SIZE		DWG. NO.
		DATE		B		LSV XXX CTP
THIRD ANGLE PROJECTION		DRAWN K.Howard		4/23/10		REV
PROPRIETARY AND CONFIDENTIAL THIS DRAWING IS THE PROPERTY OF VISUAL COMMUNICATIONS COMPANY, INC. IT IS TO BE USED FOR THE PROJECT AND DRAWING TO WHICH IT RELATES ONLY. IT IS NOT TO BE REPRODUCED OR TRANSMITTED IN ANY FORM OR BY ANY MEANS, ELECTRONIC OR MECHANICAL, INCLUDING PHOTOCOPYING, RECORDING, OR BY ANY INFORMATION STORAGE AND RETRIEVAL SYSTEM, WITHOUT THE WRITTEN PERMISSION OF VISUAL COMMUNICATIONS COMPANY, INC.		CHECKED DPZ		5/4/10		001
DO NOT SCALE DRAWING		SCALE: 8:1				
		SHEET 1 OF 1				