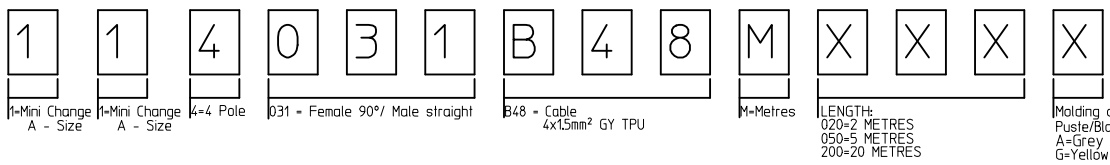


CABLE SPECIFICATION:
 TEMPERATURE RANGE:
 STATIC: max -40/+90°C
 DYNAMIC: -25/+80°C
 UL STYLE: 21215

JACKET:
 DIAMETER: 7.80+/-0.30mm
 COLOR: GRAY
 CONDUCTOR:
 COPPER: 16AWG
 INSULATION:
 DIAMETER: 2.40+/-0.10mm
 COMPOUND: TPE

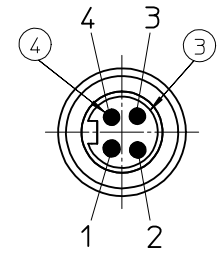
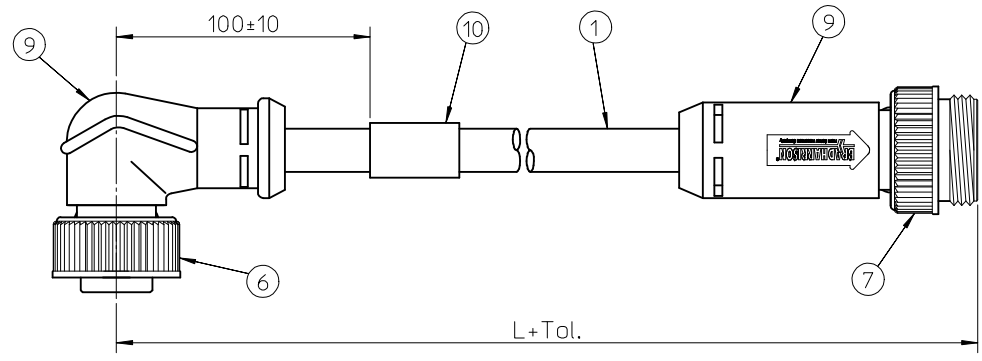
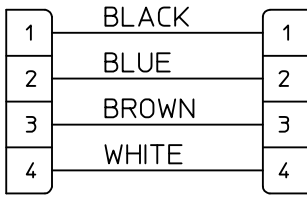
PART No MATRIX



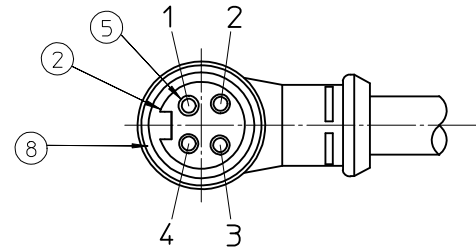
OPTIONS

Table of length tolerances		
Over	Up to and including	Tolerance (+)
0	305	+19
305	915	+45
915	1830	+56
1830	3660	+89
3660	7320	+165
7320	14640	+317
14640	30500	+610
30500	>	+2% of length

WIRING DIAGRAM



VIEW FROM THE FRONT SIDE



VIEW FROM THE FRONT SIDE

BILL OF MATERIALS

ITEM	QTY.	DESCRIPTION	MATERIAL	FINISH
10	1	LABEL	-	-
9	-	OVERMOLD	TPU	BLACK
8	1	FRICTION RING A-SIZE	DUPONT ZYTEL	-
7	1	COUPLING NUT A-SIZE MA	ZINC DIE-CAST	BLACK
6	1	COUPLING NUT A-SIZE FE	ZINC DIE-CAST	BLACK
5	4	SOCKET SLEEVE	-	-
4	4	PIN CONTACT	BRASS	PLATE PER S-243
3	1	INSERT 4P MALE A-SIZE	PVC	-
2	1	INSERT 4P FEMALE A-SIZE	PVC	-
1	-	CABLE 4x1.5mm²	TPU	GRAY

PIN OUT CHANGED
 EC NO: IPG2015-1985
 DRWN:FGAIK 2015/05/21
 CH'KD:OSTACHOWIAK 2015/05/21
 APPR:MIWASIECZKO 2015/06/09
 REV A1

QUALITY SYMBOLS	GENERAL TOLERANCES (UNLESS SPECIFIED)	
	mm	INCH
▽=0	4 PLACES ± ---	± ---
▽=0	3 PLACES ± ---	± ---
	2 PLACES ± ---	± ---
	1 PLACE ± ---	± ---
	0 PLACE ± ---	± ---
	ANGULAR ± --- °	

DIMENSION STYLE		SCALE	DESIGN UNITS
MM ONLY		---	METRIC
DRAWN BY	DATE	TITLE	
AKONDRACIUK	2015/04/29	MC 4P FE RA MA STR XM DE	
CHECKED BY	DATE		
FGAIK	2015/04/29		
APPROVED BY	DATE		
MATERIAL NO.		DOCUMENT NO.	SHEET NO.
SEE MATRIX		SD-130010-034	1 OF 1

THIRD ANGLE PROJECTION

molex

THIS DRAWING CONTAINS INFORMATION THAT IS PROPRIETARY TO MOLEX INCORPORATED AND SHOULD NOT BE USED WITHOUT WRITTEN PERMISSION