

Search Results

- Evaluate
- FAQ's
- How to Buy
- Bill of Material
  - Favorite Products List
  - Locate Distributor

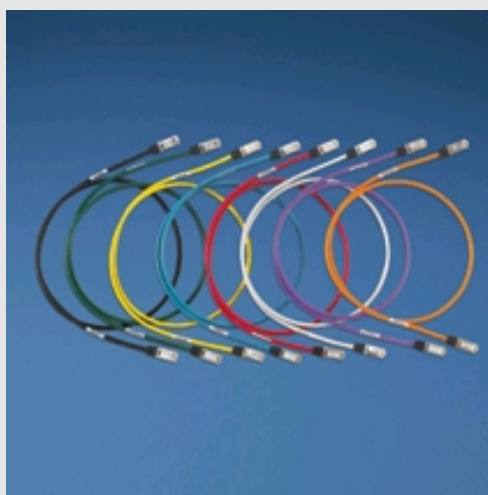
Home > Products Overview > Search Results >

Current refinements (click  to remove) Search Tips

 Text Search: 'STP6X50BU'

Your search criteria matched only one product, shown below


## STP6X50BU



- Exceed requirements ANSI/TIA/EIA-568-B.2-10 Category 6A, IEEE 802.3an-2006, and ISO 11801 Class EA channel standards
- Exceed requirements of ANSI/TIA/EIA-568-B.2-10 Category 6A and IEC 61156-5 Category 6A component standards
- Meet draft requirements of IEEE 802.3at for PoE Plus
- Each patch cord is 100% performance tested and wired T568B
- Constructed of 26 AWG stranded shielded copper cable (nominal cable diameter is .23 inches) and TX6™ PLUS Shielded Modular Plugs for superior performance
- Cable includes overall metal shield that provides conductive path for grounding
- Plug meets all applicable ANSI/TIA -968-A requirements and exceeds IEC 60603 -7 specifications
- Plug uses an integral pair manager to optimize performance and consistency by reducing untwisting of conductors within the plug
- Plug performance in center of TIA/EIA component range, ensuring interoperability and

10GBASE-T Ethernet channel performance

- Labels on patch cords provide identification of performance level, length, and quality control number
- Patented tangle free latch prevents snags and provides easy release, saving time on frequent moves, adds, and changes
- Optional Patch Cord Color Bands snap on and off individual patch cables offering endless color coding options
- Optional RJ45 Plug Lock -In Device blocks unauthorized removal of cable, IP phone, other networking equipment or critical connection

Part Number	STP6X50BU
RoHS Compliancy Status	Compliant
Part Description	Category 6A, 10 Gb/s STP patch cord with TX6™ PLUS Modular Plugs on each end.
Product Type	Copper Patch Cord
Color	Blue
Length (ft.)	50
Length (m)	15.24
Boot Color	Black
Cable Color	Blue
Cable Type	STP
CE Compliant	No
CE Marking	No
Flammability Rating	CM
Performance Level	Category 6A
Pricing Description	Copper Patch Cord, Category 6A, Blue STP Cable, 50 Feet
Wiring Scheme	T568B
Min. Order UOM	PC
Min. Order Qty.	1
BOM Qty. (# of Pkgs.)	<input type="text" value="0"/>
Add to Favorite Product List	

Please [register](#) to utilize the 'Bill of Materials', 'Submit Quotes' and 'Favorite Product List' features.