



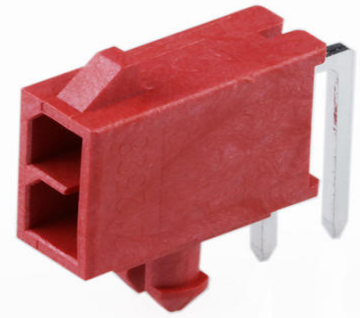
Part Number : [2125280421](#)

Product Description : Micro-Fit+ Versa Color Right-Angle Header, Through Hole, 3.00mm Pitch, Dual Row, 4 Circuits, 0.38µm Gold (Au) Plating, Glow-Wire Capable, Red

Series Number : 212528

Status : Active

Product Category : PCB Headers and Receptacles



Documents and Resources

Drawings

[2125280421 sd.pdf](#)

[2125280000-PK-000.pdf](#)

3D Models and Design Files

[STEP AP242](#)

[SOLIDWORKS](#)

[Creo](#)

[Symbol and Footprint \(Multi-Format\)](#)

Specifications

[2064600001-AS-000.pdf](#)


[2064600000-PS-000.pdf](#)

[2064600000-TS-000.pdf](#)

[2064600001-TS-000.pdf](#)

Product Environment Compliance

Compliance

GADSL/IMDS	Not Relevant
China RoHS	 per SJ/T 11365-2006
EU ELV	Not Relevant
Low-Halogen Status	Low-Halogen per IEC 61249-2-21
REACH SVHC	Not Contained per D(2025)7771-DC (04 Feb 2026)

EU RoHS	Compliant per EU 2015/863
---------	---------------------------

Compliance Statements

- EU RoHS
- REACH SVHC
- Low-Halogen

Industry Documents

- IPC 1752A Class C
- IPC 1752A Class D
- Molex Product Compliance Declaration
- IEC-62474
- chemSHERPA (xml)

Substances of Interest

- PFAS

EU RoHS Certificate of Compliance

Additional Product Compliance Information

Part Details

General

Status	Active
Category	PCB Headers and Receptacles
Series	212528
Description	Micro-Fit+ Versa Color Right-Angle Header, Through Hole, 3.00mm Pitch, Dual Row, 4 Circuits, 0.38µm Gold (Au) Plating, Glow-Wire Capable, Red
Application	Power, Wire-to-Board
Component Type	PCB Header
Product Name	Micro-Fit+ Versa Color
UPC	196823365935

Agency

CSA	LR19980
UL	E29179

Electrical

Current - Maximum per Contact	11.0A
-------------------------------	-------

Voltage - Maximum	600V AC (RMS)/DC
-------------------	------------------

Physical

Breakaway	No
Circuits (Loaded)	4
Circuits (maximum)	4
Color - Resin	Red
Durability (mating cycles max)	200
First Mate / Last Break	No
Flammability	94V-0
Glow-Wire Capable	Yes
Keying to Mating Part	Yes
Lock to Mating Part	Yes
Material - Metal	High Copper Alloy
Material - Plating Mating	Gold
Material - Plating Termination	Matte Tin
Material - Resin	Liquid Crystal Polymer (LCP)
Net Weight	0.660/g
Number of Rows	2
Orientation	Right Angle
Packaging Type	Tray
PCB Thickness - Recommended	1.57mm
PC Tail Length	3.18mm
Pitch - Mating Interface	3.00mm
Pitch - Termination Interface	3.00mm
Plating min - Mating	0.381µm
Plating min - Termination	1.520µm
Polarized to Mating Part	Yes
Polarized to PCB	Yes
Shrouded	Shrouded
Temperature Range - Operating	-40° to +125°C
Termination Interface Style	Through Hole

Mates With / Use With

Mates with Part(s)

Description	Part Number
Micro-Fit+ Dual Row Receptacle Housings	<u>206461</u>

This document was generated on May 14, 2026