



**Part Number :** [314032210](#)

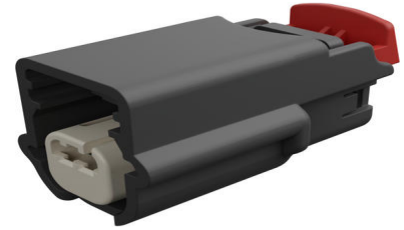
**Product Description :** 2.54mm MX64 Sealed Single Row Crimp Housing, MX64 Terminal, Gray, 2 Circuits, Key B, with CPA Lock

**Series Number :** 31403

**Status :** Active

**Product Category :** Connector Housings

**Engineering Part Number :** CVP-314032210



---

## Documents and Resources

### Drawings

[314032210\\_sd.pdf](#)

[PK-31300-256-001.pdf](#)

### 3D Models and Design Files

[STEP AP242](#)

[SOLIDWORKS](#)

[Creo](#)

### Specifications

[314020000-000.pdf](#)

[AS-31402-000-001.pdf](#)


[PS-31402-000-001.pdf](#)

[TS-31402-001-1X2-001.pdf](#)

---

## Product Environment Compliance

### Compliance

GADSL/IMDS	Compliant
China RoHS	 per SJ/T 11365-2006
EU ELV	Compliant per 2000/53/EC
Low-Halogen Status	Low-Halogen per IEC 61249-2-21
REACH SVHC	Contains Dodecamethylcyclohexasiloxane; Decamethylcyclopentasiloxane;

	Octamethylcyclotetrasiloxane per D(2025)4165-DC (25 June 2025)
EU RoHS	Compliant per EU 2015/863

### Compliance Statements

- EU RoHS
- REACH SVHC
- Low-Halogen

### Industry Documents

- IPC 1752A Class C
- IPC 1752A Class D
- Molex Product Compliance Declaration
- IEC-62474
- chemSHERPA (xml)

### Substances of Interest

- PFAS

### EU RoHS Certificate of Compliance

### Additional Product Compliance Information

## Part Details

### General

Status	Active
Category	Connector Housings
Series	31403
Description	2.54mm MX64 Sealed Single Row Crimp Housing, MX64 Terminal, Gray, 2 Circuits, Key B, with CPA Lock
Application	Power, Wire-to-Board
Product Name	MX64
UPC	883906414221

### Physical

Circuits (maximum)	2
Color - Resin	Gray
Gender	Receptacle
Glow-Wire Capable	No
Keying to Mating Part	Yes

Lock to Mating Part	Yes
Material - Resin	Polybutylene Terephthalate (PBT)
Net Weight	4.710/g
Number of Rows	1
Packaging Type	Bag
Panel Mount	No
Pitch - Mating Interface	2.54mm
Polarization	B
Polarized to Mating Part	Yes
Temperature Range - Operating	-40° to +125°C

### Solder Process Data

Lead-Free Process Capability	N/A
------------------------------	-----

---

### Mates With / Use With

#### Mates with Part(s)

Description	Part Number
Mates With	Sensors, Other USCAR Interfaces

#### Use with Part(s)

Description	Part Number
MX64 Female Terminals	<u>33467</u>
MX64 Female Terminals	<u>33468</u>

---

This document was generated on Apr 23, 2026