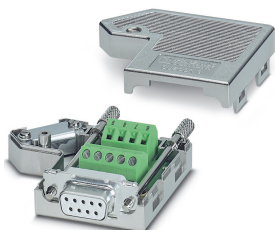


## D-SUB bus connector - SUBCON 37/F-SH - 2300986

Please be informed that the data shown in this PDF Document is generated from our Online Catalog. Please find the complete data in the user's documentation. Our General Terms of Use for Downloads are valid  
(<http://phoenixcontact.com/download>)




D-SUB connector, 37-pos., female connector, one cable entry <35°, universal type for all systems, pin assignment: 1, 2, 3, ..., 36, 37 to screw-connection terminal block

The figure shows version



### Key Commercial Data

Packing unit	1 pc
GTIN	 4 046356 684590
GTIN	4046356684590
Weight per Piece (excluding packing)	100.000 g
Custom tariff number	85366990
Country of origin	United States

### Technical data

#### Dimensions

Max. cable diameter	12.7 mm
Min. cable diameter	4 mm
Width	16.3 mm
Height	49.8 mm
Length	99.5 mm

#### Ambient conditions

Ambient temperature (operation)	-20 °C ... 75 °C
Ambient temperature (storage/transport)	-25 °C ... 80 °C
Altitude	5000 m (For restrictions see manufacturer's declaration)
Degree of protection	IP20

## D-SUB bus connector - SUBCON 37/F-SH - 2300986

### Technical data

#### General

Nominal voltage $U_N$	48 V AC/DC
Nominal current $I_N$	1 A
Signal	Point-to-point
Insertion/withdrawal cycles	> 50
SUBCON fixing screws	4-40 UNC
Tightening torque	0.4 Nm
Housing material	ABS, metal-plated
Pin assignment	All connections are 1:1 on the screw terminal block

#### Connection data

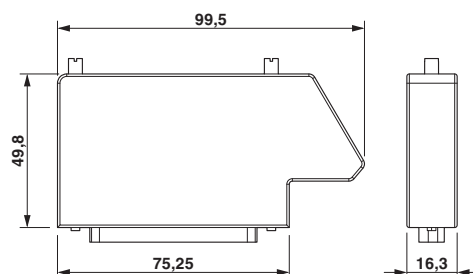
Connection	D-SUB connection
Number of positions	37
Connection method	D-SUB connector

#### Environmental Product Compliance

China RoHS	Environmentally Friendly Use Period = 50 years
	For details about hazardous substances go to tab "Downloads", Category "Manufacturer's declaration"

### Drawings

Dimensional drawing



Dimensional drawing

### Classifications

eCl@ss

eCl@ss 4.0	27140816
eCl@ss 4.1	27140816
eCl@ss 5.0	27143424
eCl@ss 5.1	27143400

## D-SUB bus connector - SUBCON 37/F-SH - 2300986

### Classifications

#### eCl@ss

eCl@ss 6.0	27143400
eCl@ss 7.0	27440302
eCl@ss 8.0	27440302
eCl@ss 9.0	27440302

#### ETIM

ETIM 3.0	EC001132
ETIM 4.0	EC001132
ETIM 5.0	EC001132
ETIM 6.0	EC001132
ETIM 7.0	EC001132

#### UNSPSC

UNSPSC 6.01	30211802
UNSPSC 7.0901	39121402
UNSPSC 11	39121402
UNSPSC 12.01	39121402
UNSPSC 13.2	39121522
UNSPSC 19.0	39121522