

EXTENDED RANGE

- TOOLING FEASIBILITY CONFIRMED
- SAMPLES ON DEMAND
- AVAILABILITY ON DEMAND

PRODUCT DESCRIPTION CODE:
10131935-YXXXLF

PLATING:
(AS AVAILABLE)

- 1 = 0.76 μ m GOLD ON CONTACT AREA
2.00 μ m MIN MATTE TIN ON TAIL
- 2 = 0.38 μ m GOLD ON CONTACT AREA
2.00 μ m MIN MATTE TIN ON TAIL
- 3 = 0.20 μ m GOLD ON CONTACT AREA
2.00 μ m MIN MATTE TIN ON TAIL
- 4 = 0.76 μ m GXT ON CONTACT AREA
2.00 μ m MIN MATTE TIN ON TAIL
- 5 = 0.38 μ m GXT ON CONTACT AREA
2.00 μ m MIN MATTE TIN ON TAIL
- 6 = 0.20 μ m GXT ON CONTACT AREA
2.00 μ m MIN MATTE TIN ON TAIL
- 9 = 2.54 μ m MIN MATTE TIN ON CONTACT AREA
2.00 μ m MIN MATTE TIN ON TAIL

1.27 μ m NICKEL MIN UNDERLAYER

NOTES :

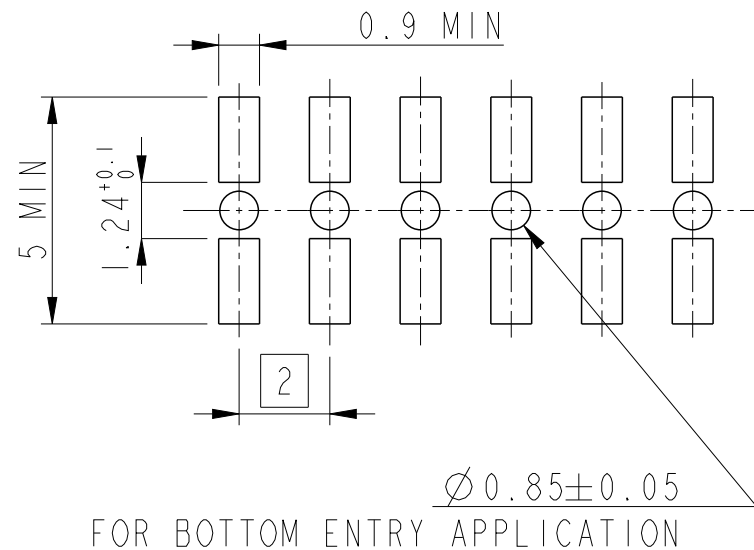
- 1 - MATERIAL
HOUSING : HIGH TEMPERATURE GLASS FILLED FLAME
RETARDANT PER UL 94 V-0
TERMINAL: COPPER ALLOY
- 2 - TO DETERMINE DIMENSIONS :
N = NUMBER OF POSITIONS PER ROW
EXAMPLE : 8 POS N x 2 = 16mm
UP TO N = 12 TOLERANCE : 0
-0.10
FROM N = 13 TOLERANCE : 0.05
-0.10
- 3 - RoHS COMPATIBLE PRODUCT SPECIFICATIONS
- a - PLATING :
"LF" MEANS THE PRODUCT IS LEAD-FREE, 2 μ m MINIMUM
MATTE TIN OVER 1.27 μ m MINIMUM NICKEL UNDERPLATE
- b - MANUFACTURING PROCESS COMPATIBILITY
THE HOUSING WILL WITHSTAND EXPOSURE TO 260°C PEAK
TEMPERATURE FOR 30 SECONDS MAX IN A CONVECTION,
INFRA-RED OR VAPOR PHASE OR REFLOW OVEN
- c - LABELLING :
MEETS PACKAGING SPECS AS PER GS-14-920
- d - LEGAL STATEMENT : SEE GS-47-0004
- 4 - THIS PART SERIES IS NOT INITIALLY INTENDED FOR
AUTOMOTIVE APPLICATIONS. ADDITIONAL FEES ARE
CHARGEABLE FOR ANY ADDITIONAL QUALIFICATION AND
TEST REPORTS PERFORMED OUTSIDE THE SCOPE OF THE
STANDARD PRODUCT SPECIFICATIONS.
- 5 - UNLESS OTHERWISE APPROVED BY AMPHENOL, ALL PARTS
AND COMPONENTS ARE DESIGNED & BUILT ACCORDING TO
AMPHENOL'S SPECIFICATIONS WHICH ARE SUBJECT TO
CHANGE WITHOUT NOTICE.

RoHS COMPATIBLE, SEE NOTE 3

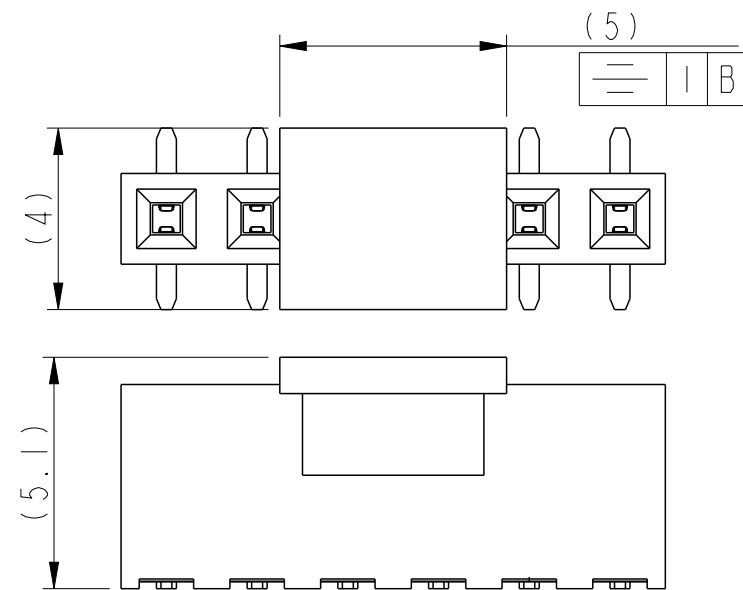
PACKAGING:
(MAY BE SUBJECT TO TOOLING FEES)

"A" : TAPE & REEL
"U" : TUBE
"B" : TUBE WITH CAP

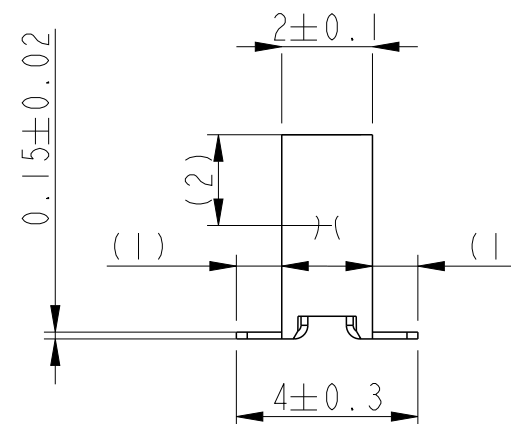
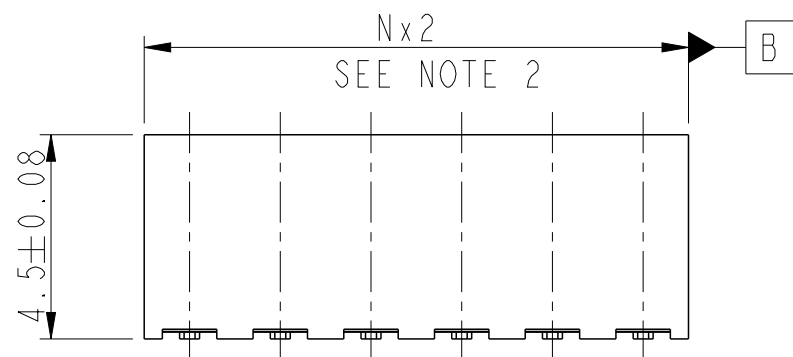
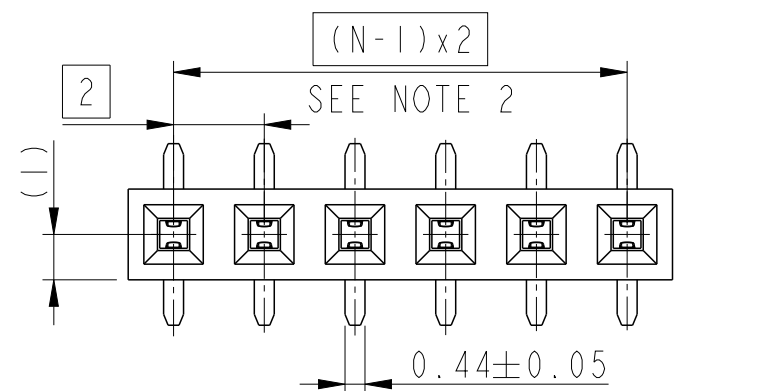
TOTAL NUMBER OF POSITIONS: 02 TO 25



RECOMMENDED PAD LAYOUT



WITH PICK-UP CAP



spec ref	-	dr	Cyril Jeune	2014/12/02	projection	mm	size	A3	scale	6:1
tolerance std	ISO 406 ISO 1101	eng	Detouillon, Da	2025/02/05	chr	-	ecn no	ELX-F-54290-1	rel level	Released
surface	linear	appr	Lamy, Alexandr	2025/02/06	product family	-	dwg no	10131935	rev	B
ISO 1302	angular	0°	±°	Amphenol FCI	MINITEK RECEPTACLE 2MM	ASSEMBLY VCC SR SMT	cat. no.	-	Product - Customer Drw	sheet 1 of 1
www.fci.com										