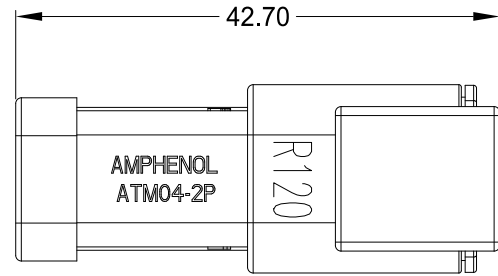
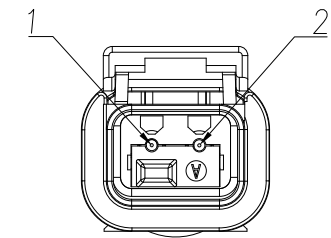
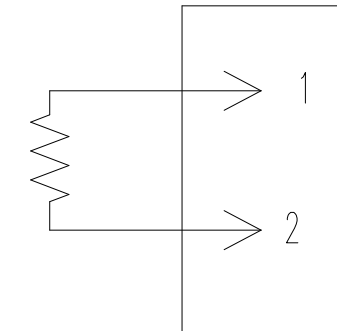


REVISIONS					
REV	ECO	DESCRIPTION	DATE	BY	APPR
A1	-	RELEASE NEW PRODUCT	18APR19	BROOK	TOMMY
A2	-	UPDATED END-CAP TO BLACK TO REFLECT PCN-22004 AND PCN-22024.	03192026	RO	RO



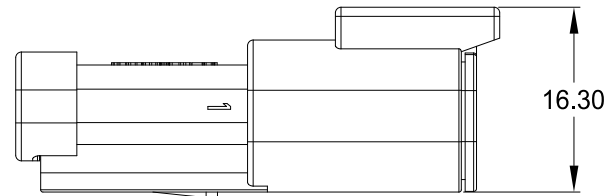
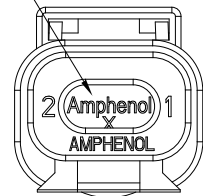
WIRING DIAGRAM

120 OHMS  
1/2 WATT  
5%

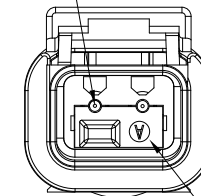


FACE VIEW

SOLID REAR SEAL



CONTACT  
AT60-202-2031  
2X

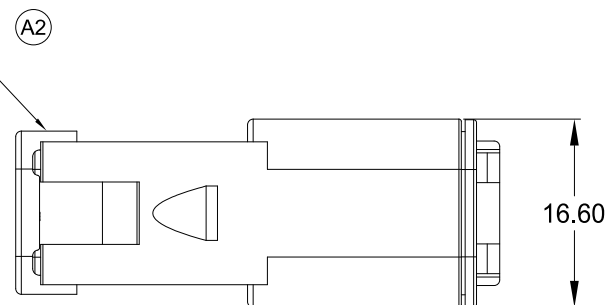


LOCKING WEDGE  
AWM-2PA

NOTES: UNLESS OTHERWISE SPECIFIED

- MATERIAL:  
HOUSING: THERMOPLASTIC; GRAY  
SEAL: SILICONE RUBBER AND GREY CONNECTOR BODY
- MODIFICATIONS: RESISTOR
- CONNECTOR SPECIFICATIONS:  
3.1 CURRENT RATING: 7.5 AMPS  
3.2 OPERATING TEMPERATURE: -55°C TO +125°C  
3.3 DIELECTRIC WITHSTANDING VOLTAGE: LESS THAN 2 MILLIAMPS CURRENT LEAKAGE @ 1500 VOLTS AC.  
3.4 INSULATION RESISTANCE: 1000 MEGOHMS MIN @ 25°C.  
3.5 MOISTURE RESISTANCE: IP67 ( MATED CONDITION )  
3.6 MATING CYCLE DURABILITY: 100 CYCLES  
3.7 RoHS COMPLIANT
- RESISTOR SPECIFICATIONS: 120 OHMS
- MATING PART: ATM06-2S\* PLUG  
(\* = MODIFICATIONS AND COLORS )
- ALL DIMENSIONS ARE FOR REFERENCE USE ONLY.

BLACK END CAP



ATM04-2P-RA120GY		REF: DTM04-2P-P006	
PART NUMBER		DESCRIPTION	
QUANTITY	MATERIALS LIST		
UNLESS OTHERWISE SPECIFIED 1) All dimensions are in metric(mm). 2) Tolerances are as follows: 1 PL DEC ±0.30 2 PL DEC ±0.15 3 PL DEC ±0.08 Fractions ±1/64 Angles ±1° 3) Note reference =		SIGNATURES      DATE DRAWN: BROOK DING      18APR19 CHECKED: ORION LI      18APR19 ENGINEER: APPROVAL: TOMMY      18APR19 CUSTOMER:	
MATERIAL SPECIFICATIONS:		THIS DRAWING IS SUPPLIED FOR INFORMATION ONLY. DESIGN FEATURES, SPECIFICATIONS AND PERFORMANCE DATA SHOWN HEREON ARE THE PROPERTY OF THE AMPHENOL CORPORATION. NO RIGHTS OF REPRODUCTION ARE IMPLIED. ALL DIMENSIONS ARE SUBJECT TO NORMAL MANUFACTURING VARIATIONS.	
PROCESS SPECIFICATIONS:		SCALE: NONE	
NEXT ASSY:		SHEET 1 OF 1	
		<p style="text-align: center;"><b>Amphenol</b></p> <p style="text-align: center;">Sine Systems - www.amphenol-sine.com 44724 Morley Drive Clinton Township, MI 48036</p> <p style="text-align: center;">RECEPTACLE, A KEY, 2 CONTACTS, RESISTOR, ATM GRAY</p>	
SIZE	TYPE	DWG NO:	REVISION
B	C-	ATM04-2P-RA120GY	A1

TITLE: RECEPTACLE, A KEY, 2 CONTACTS, RESISTOR, ATM, GRAY  
DWG NO: ATM04-2P-RA120GY  
REV: A1  
SH: 1  
OF: 1