

6

5

4

3

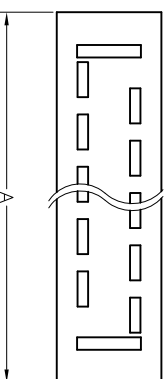
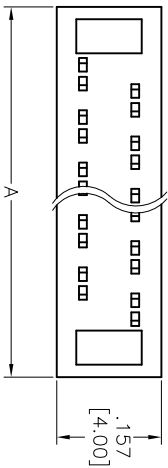
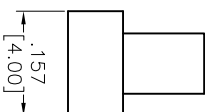
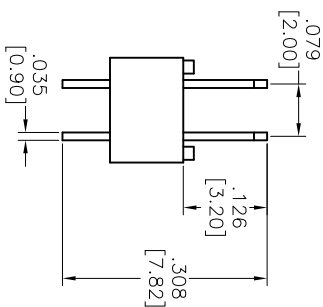
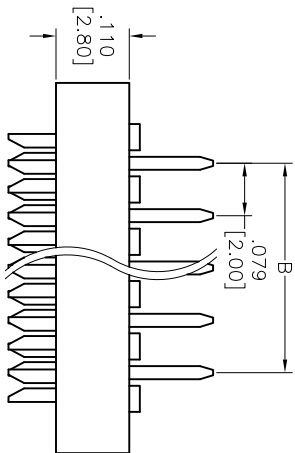
2

1

APPROVED: \_\_\_\_\_

DATE: \_\_\_\_\_ TITLE: \_\_\_\_\_

Rev	AWO #	Description	Date	Appr
-		RELEASED	8/12/05	
A		REVISED SHAPE	8/31/11	



COMPONENT

## SPECIFICATIONS:

Material:

Insulator: Thermoplastic, glass reinforced, rated UL 94V-0

Insulator color: Black

Contacts: Phosphor Bronze

Plating:

Tin over Copper underplate overall

Electrical:

Operating voltage: 250 VAC Max.

Current rating: 1 Amp Max.

Contact resistance: 30 mohms Max. @ 1 Amp DC

Insulation resistance: 1,000 Mohms @ 500 VDC

Dielectric withstanding voltage: 500 VAC for 1 minute

Temperature Rating:

Operating temperature: -40°C to +105°C

Environmental:

Lead free, RoHS compliant

Positions: 8, 10, 12, 16, 20, 24, 26, 30, 34, 40, 44, 50  
 A = .079 [2.00] X No. of Positions Per Row + .163 [4.15]  
 B = .079 [2.00] X No. of Spaces

**ADAM TECH**

909 Railway Avenue, Union, NJ 07083

Phone: 908-687-5000 Fax: 908-687-5710

2.0mm IDC TRANSITION PLUG, TIN PLATED

UNLESS OTHERWISE SPECIFIED ALL DIMENSIONS ARE INCHES [MM] TOLERANCES: EXCEPT AS NOTED INCHES											
---	--	--	--	--	--	--	--	--	--	--	--