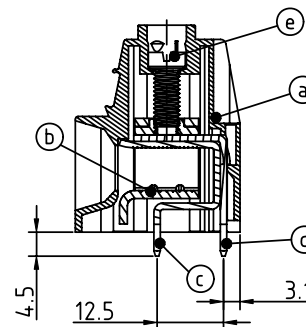
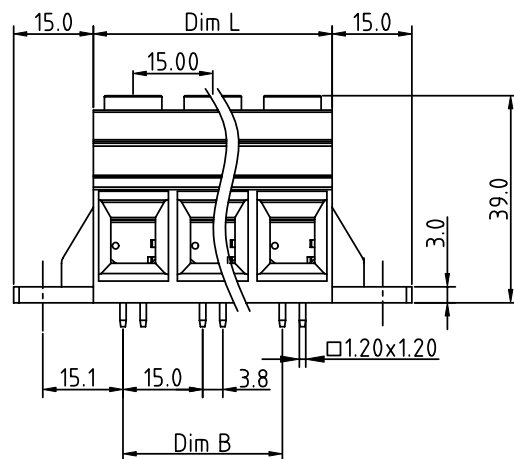
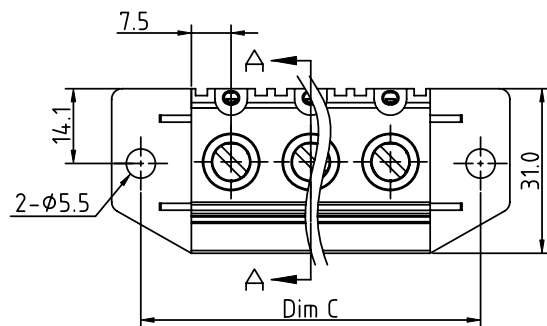
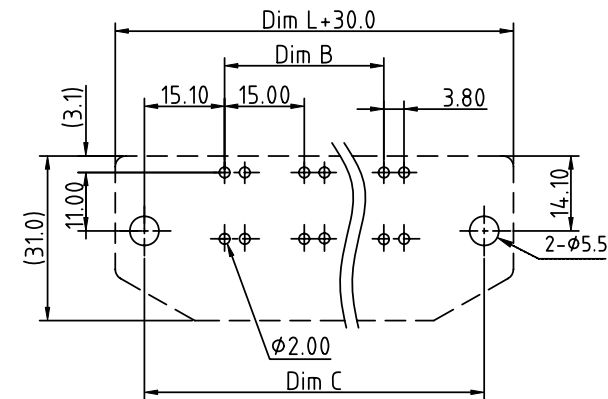


PRODUCT NUMBER	PITCH
EIxxC1x310J0G	15.00 mm



SECTION A-A

RECOMMENDED P.C.B LAYOUT
TOP VIEW

Material:

- Item@ Terminal housing :Thermoplastic (UL 94V-0)
- Item@ Clamp : Steel Stamping , Zinc plated
- Item@ Solder pin1 : Copper , Tin plated
- Item@ Solder pin2 : Copper , Tin plated
- Item@ Terminal screw: Zinc plating"-slot type

Electrical

cULus

IEC

- Voltage rating: 600V 1000V
- Current rating: 125A 125A
- Wire range: 35mm²
- Solid wire(AWG): 2-20
- Stranded wire(AWG): 2-20
- Torque(Lb-In): 36.5
- Screw: M5
- Wire strip length: 12-15mm
- Withstanding Voltage: 2.2KV 8KV
- Operating temperature: -40° C to +115° C
- Soldering temperature: 260° C±5° C/5 Sec
- Safety Approval: cULus

DIMENSION

Dim L	Nx15.0
Dim B	(N-1)x15.0
Dim C	Nx15.0+19.0

N=Number of poles





Poles	Tolerance
2p~3p	±0.30
4p~5p	±0.50
6p~10p	±0.80

PART NO.: EI xx C 1 x 3 10J0 G

Solid block
No. of poles
02 2 poles
03 3 poles
...
10 10 poles

Color
0 Black (RAL9005)
2 Red (RAL3001/D)
3 Orange(RAL2011/P)
4 Yellow(RAL1018/A)
5 Green(RAL6018/T)
6 Blue (RAL5015/A)
8 Grey(RAL7035/D)
9 White(RAL1102)
C Green(RAL6018/U)

RoHS compliant
(lead<4%)
In copper Alloy

mat'l. code				surface ASME Y14.5		tolerance ASME Y14.5		projection 		product family TERMINAL BLOCK									
ltr	ecn	no	dr	date		tolerances unless otherwise specified						title TERMINAL BLOCK RISING CLAMP,180D WIRE INLET,SOLID BLOCK							
						angles			X.±0.5										
						X.X±0.3													
						X'.XX±0.1													
				dr	EVIN ZHONG		041514				dwg no				sheet 1 of 1		size		
				engr	EVIN ZHONG		041514				ElxxC1x310J0G				A4				
				chr	HANKE FENG		041514												
				appd	SHI JUN		041514												
sheet index		revision		A															
sheet		sheet		1															