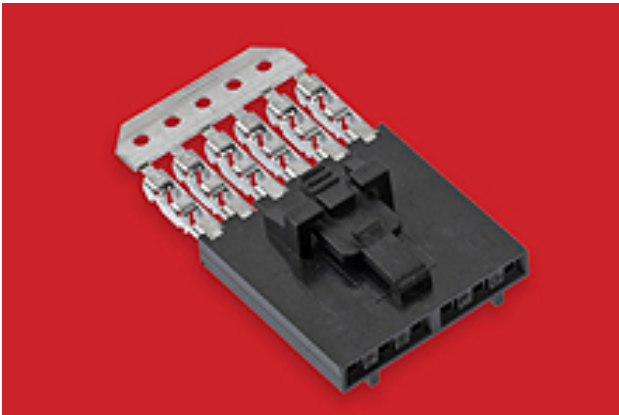




**Part Number :** [14567247](#)  
**Product Description :** 2.54mm Pitch SL  
Insulation Displacement Connector Assembly,  
Female, Single Row, Version G, Positive Lock,  
Wire Size 22 AWG, 0.38µm Gold (Au), 24  
Circuits  
**Series Number :** 70400  
**Status :** Active  
**Product Category :** Connector Housings  
**Engineering Number :** 70400-2998




## Documents & Resources

**Drawings**  
[014567247\\_sd.pdf](#)  
[PK-70873-0001-001.pdf](#)

**3D Models and Design Files**  
[014567247\\_stp.zip](#)

## Product Environment Compliance

### Compliance

GADSL/IMDS	Not Relevant
China RoHS	
EU ELV	Not Relevant
Low-Halogen Status	Not Low-Halogen per IEC 61249-2-21
REACH SVHC	Not Contained per D(2024)7663-DC (21 Jan 2025)
EU RoHS	Compliant per EU 2015/863

### Multiple Part Product Compliance Statements

- Eu RoHS
- REACH SVHC
- Low-Halogen

### Multiple Part Industry Compliance Documents

- IPC 1752A Class C
- IPC 1752A Class D

- Molex Product Compliance Declaration
- IEC-62474
- chemSHERPA (xml)

## EU RoHS Certificate of Compliance

---

### Part Details

#### General

Status	Active
Category	Connector Housings
Series	70400
Description	2.54mm Pitch SL Insulation Displacement Connector Assembly, Female, Single Row, Version G, Positive Lock, Wire Size 22 AWG, 0.38µm Gold (Au), 24 Circuits
Comments	Terminals Preloaded
Component Type	Housing
Product Name	SL
UPC	800753764224

#### Agency

CSA	LR19980
UL	E29179

#### Electrical

Voltage - Maximum	250V
-------------------	------

#### Physical

Circuits (Loaded)	24
Color - Resin	Black
Durability (mating cycles max)	50
Entry Angle	Vertical
Flammability	94V-0
Gender	Female
Glow-Wire Capable	No
Lock to Mating Part	Yes

Material - Metal	Phosphor Bronze
Material - Plating Mating	Gold
Material - Plating Termination	Tin
Material - Resin	Polyester Alloy
Net Weight	3.870/g
Number of Rows	1
Packaging Type	Tube
PCB Retention	None
Pitch - Mating Interface	2.54mm
Plating min - Mating	0.381µm
Plating min - Termination	1.905µm
Polarized to Mating Part	Yes
Stackable	Yes
Temperature Range - Operating	-40° to +105°C
Termination Interface Style	IDT or Pierce
Wire/Cable Type	Discrete Wire, Ribbon Cable
Wire Insulation Diameter	1.35mm max.
Wire Size (AWG)	22

---

## Mates With / Use With

### Mates with Part(s)

Description	Part Number
SL Single Row Housing Panel Mounts	<u>70018</u>
SL Single Row Crimp Housings	<u>70107</u>
SL Vertical Single Row Headers	<u>70543</u>
SL Vertical Single Row Headers	<u>70545</u>
SL Right-Angle, Single Row, Low Profile Headers	<u>70553</u>
SL Right-Angle Single Row Headers	<u>70555</u>

---

## Application Tooling

### Global

Description	Part Number
IDT Discrete Handtool Module	<u>621000700</u>
Ribbon Cable Tool Kit, Press Not Included	<u>622016600</u>

---

This document was generated on Mar 20, 2025