

## Data sheet

ST188xxLDNN AST188

Page 1/5

P/N

AST188xx04

xx=number of poles

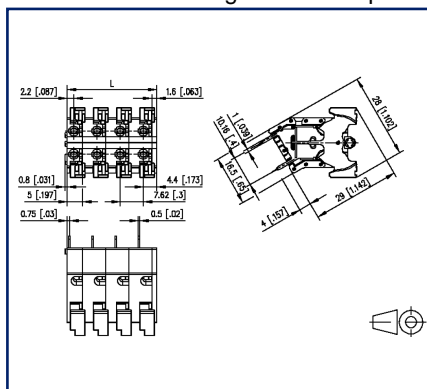
2025/05/05

Version: Y

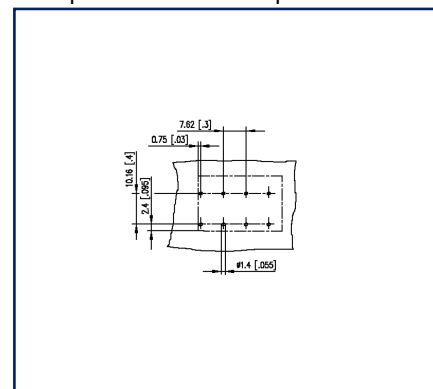
### Illustrations



Dimensional drawing as an example



Drill pattern as an example



See enlarged drawings at the end of document

### Product specification

- spring clamp terminal block, solderable, double solder pins
- centerline 7.62 mm, direction of connection 60°
- color gray
- push-button, double solder pins



# U | Contact

## Data sheet ST188xxLDNN AST188

Page 2/5

P/N  
AST188xx04  
xx=number of poles  
2025/05/05  
Version: Y

### Technical Data

General Data			
Solder pin length	4 mm		
min. number of poles	2		
max. number of poles	24		
Insulating material class	CTI 600		
clearance/creepage dist.	7.12 mm		
Protection category	IP20		
Insul. strip length	15 mm		
Rated current	15 A		
Overvoltage category	III	III	II
Pollution degree	3	2	2
Rated voltage	160 V	400 V	400 V
Rated test voltage	4 kV	4 kV	4 kV
Terminal data			
rat.wiring solid AWGmax	0.08 mm² - 2.5 mm² / AWG 28 - AWG 12		
rat.wiring strand.AWGmax	0.08 mm² - 2.5 mm² / AWG 28 - AWG 12		
Approvals			
 V / A / AWG	600 / 15 / 28 - 12		
approval UL - File No.	E121004		
	250 V / 13.5 A / T60		
Material			
insulating material	PA66		
flammability class	V0		
spring material	Spring steel		
contact material	CuSn		
Contact surface	Sn		
Glow-Wire Flammability GWFI	960 °C acc. to IEC 60695-2-12		
Glow-Wire Flammability GWIT	775 °C acc. to IEC 60695-2-13		
Climatic Data			
upper limit temperature	105 °C		
lower limit temperature	-40 °C		

# U | Contact

Data sheet

ST188xxLDNN AST188

Page 3/5

P/N

AST188xx04

xx=number of poles

2025/05/05

Version: Y

## Technical Data

### general

Tolerance

ISO 2768 -mH

Solderability

Acc. to JEDEC JESD22-B102E 245°C/5s

### Application note

This product is a standard product of METZ CONNECT. METZ CONNECT is not aware of the specific intended use of the goods by the Customer or any customers of the Customer. The Customer guarantees that it has fully and sufficiently tested the use of the goods and any product modifications, product changes or product enhancements with regard to the specific intended use in accordance with the state of the art or in any other way. At METZ CONNECT's request, the Customer shall submit and make available meaningful evidence (e.g. test and laboratory protocols, certifications, etc.).



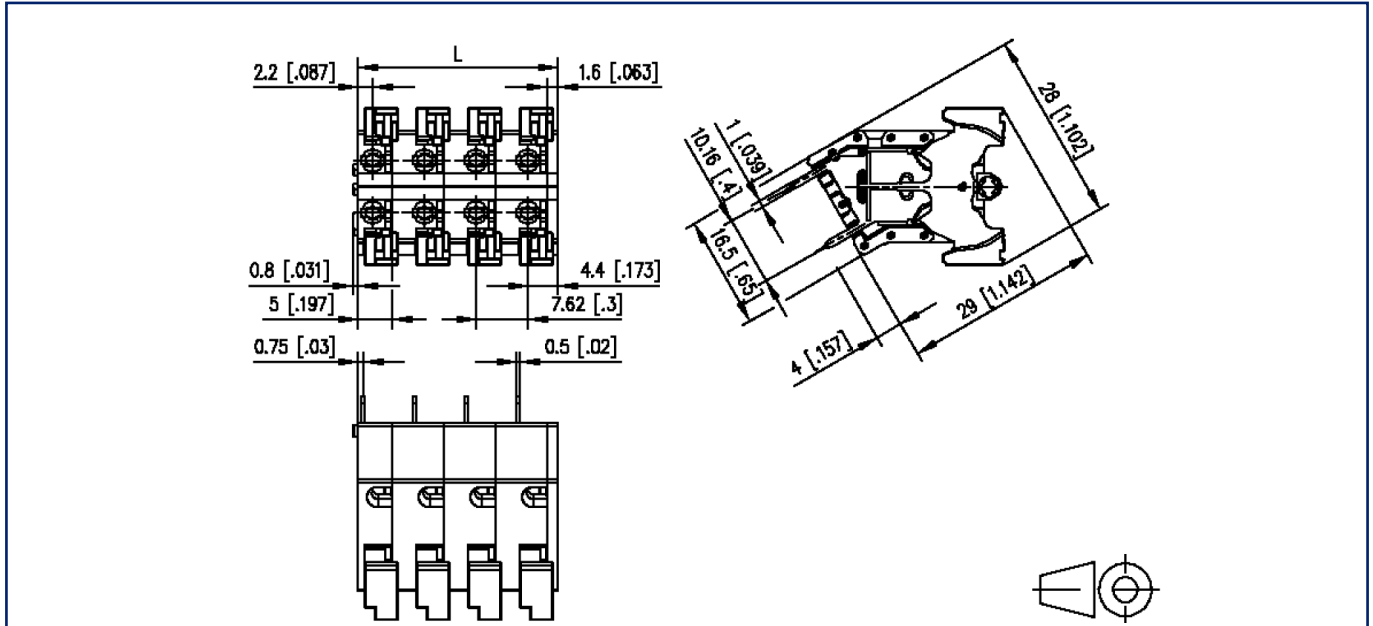
METZ CONNECT GmbH | Im Tal 2 | 78176 Blumberg | Germany

Phone +49 7702 533-0 | Fax +49 7702 533-433

Weitere Dokumentation siehe / additional documentation see /  
documentation supplémentaire voir [www.metz-connect.com](http://www.metz-connect.com)

### Illustrations

Dimensional drawing as an example



$L = (\text{pole size} - 1) \times \text{centerline} + 6.6 \text{ mm} [0.26]$

## Illustrations

## Drill pattern as an example

