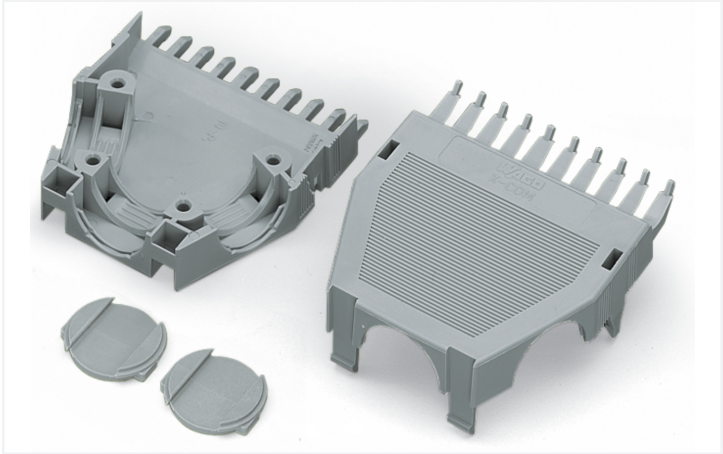
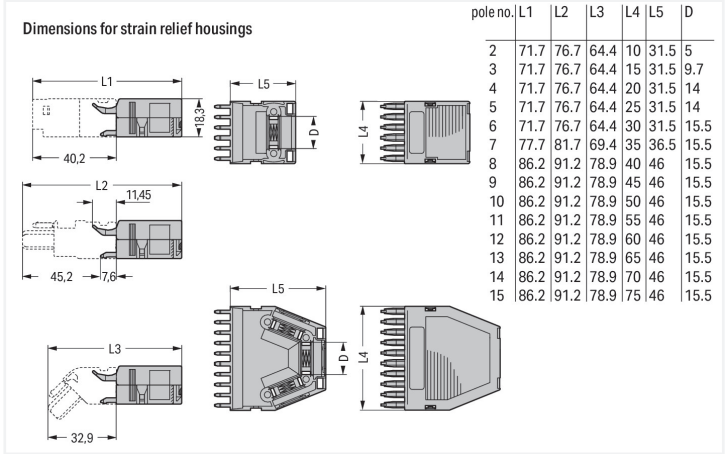


Data Sheet | Item Number: 769-1615
Strain relief housing; for female and male connectors; 2 parts; Pin spacing 5 mm;
15-pole; gray
<https://www.wago.com/769-1615>



Color: ■ gray Similar to illustration



Dimensions in mm
Dimensions in mm

Connection data

Connection 1	
Pole number	15

Physical data

Width	75 mm / 2.953 inches
Height	18.3 mm / 0.72 inches
Depth	46 mm / 1.811 inches

Material data

Note (material data)	Information on material specifications can be found here
Color	gray
Fire load	0.641 MJ
Weight	17.5 g

Commercial data

Product Group	18 (X-COM-System)
PU (SPU)	25 pcs
Packaging type	Box
Country of origin	DE
GTIN	4017332736510
Customs tariff number	39269097900



Product classification	
UNSPSC	39121421
eCl@ss 10.0	27-14-11-92
eCl@ss 9.0	27-14-11-92
ETIM 9.0	EC002848
ETIM 8.0	EC002848
ECCN	NO US CLASSIFICATION

Environmental Product Compliance	
RoHS Compliance Status	Compliant,No Exemption

Downloads	
Environmental Product Compliance	
Compliance Search	
Environmental Product Compliance 769-1615	↓

Documentation			
Bid Text			
769-1615	19.02.2019	xml 2.64 KB	↓
769-1615	23.05.2017	doc 23.00 KB	↓

CAD/CAE-Data	
CAD data	CAE data
2D/3D Models 769-1615	EPLAN Data Portal 769-1615
↓	↓
	WSCAD Universe 769-1615
	↓
	ZUKEN Portal 769-1615
	↓



1 Compatible Products

1.1 Optional Accessories

1.1.1 Installation

1.1.1.1 Mounting accessories



Item No.: 209-174
Cable clamp; for strain relief; 7 or more poles



Item No.: 209-173
Fixing screw; for cable clamp; 7 or more poles

1.1.2 Marking

1.1.2.1 Marker



Item No.: 209-501/000-006
WSB marking card; as card; not stretchable; plain; snap-on type; blue



Item No.: 209-501/000-007
WSB marking card; as card; not stretchable; plain; snap-on type; gray



Item No.: 209-501/000-023
WSB marking card; as card; not stretchable; plain; snap-on type; green



Item No.: 209-501/000-017
WSB marking card; as card; not stretchable; plain; snap-on type; light green



Item No.: 209-501/000-012
WSB marking card; as card; not stretchable; plain; snap-on type; orange



Item No.: 209-501/000-005
WSB marking card; as card; not stretchable; plain; snap-on type; red



Item No.: 209-501/000-024
WSB marking card; as card; not stretchable; plain; snap-on type; violet



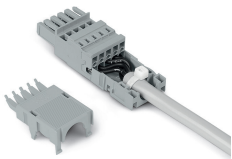
Item No.: 209-501
WSB marking card; as card; not stretchable; plain; snap-on type; white



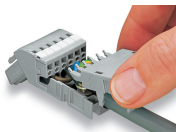
Item No.: 209-501/000-002
WSB marking card; as card; not stretchable; plain; snap-on type; yellow

Installation Notes

Installation



2- to 5-pole strain relief housings feature one cable outlet (rear side).
6- to 7-pole strain relief housings feature one cable outlet (rear side).
8- to 9-pole strain relief housings feature two cable outlets and one cover.
10- to 16-pole strain relief housings feature three cable outlets and two covers.

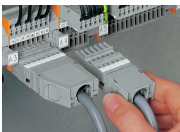


Snapping on a strain relief housing.



Snap-on type strain relief housing, consists of strain relief support and housing, 6-pole and 1-conductor female plugs, angled, 6-pole

Application



Application
Snap-on type strain relief housings for 769 Series

Subject to changes. Please also observe the further product documentation!

Current addresses can be found at: www.wago.com