

## SERIES 80 Mighty Mouse Connectors



### Size #20 AWG Wire Adapter for Size #23 Contact and Size #20HD Crimp Contacts

#### ADAPTER FOR CRIMPING #20 AWG WIRE TO SIZE #23 STANDARD BORE CONTACTS



#20 AWG Wire Adapter

Size #22 AWG wire is the largest wire size that fits standard size 23 contacts. Use this adapter to attach larger #20 gage wire. First, crimp wire to adapter, then crimp the adapter into the size #23 contact. Adapters are made of tellurium copper alloy #1452, and are gold plated. Crimp with M22520/1-01 tool and 809-138 (Daniels TH653) positioner. These adapters cannot be removed from connectors.

Part Number		
Adapter Size	Wire Size	Part Number
#22-20	#20	809-093

Contact Crimp Tools		
Description	Part Number	Military Part Number
Hand Crimp Tool	809-136	M22520/1-01
Positioner	809-137	M22520/1-04

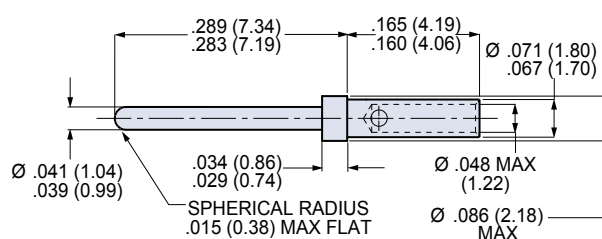
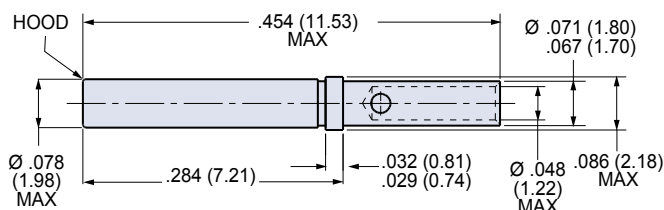
#### SIZE #20HD CRIMP CONTACTS



#20 HD Pin Contact

#20 HD Socket Contact

High-density size #20HD contacts accept #20 to #24 AWG wire. At rated test current of 7.5 amps, the maximum voltage drop is 55 millivolts. Contacts are gold-plated copper alloy. Socket contacts feature stainless steel hoods to protect against probe damage. Contacts are bulk packaged. Terminate with M22520/2-01 crimper and 809-206 positioner.



#### NOTES

##### Material

- Pin and socket: beryllium copper per ASTM B196 or B197.
- Socket hood: SST per QQ-S-763.

##### Finish

- Pin & socket: 50 microinches min. gold plate per ASTM B488 over nickel underplate.
- Socket hood: passivate per QQ-P-35.

##### Specifications

- Current rating: 7.5 amps maximum
- Temperature range: -65° to +175° C.
- Minimum separation force: 0.7 oz.
- Maximum engagement force: 18 oz.
- Contact millivolt drop: 55 millivolts max at 7.5 amps, 25°C

Contact Crimp and Removal Tools		
Tool	Glenair P/N	Military P/N
Hand Crimp Tool	809-015	M22520/2-01
Pin//Socket Positioner	809-206	N/A
Contact Insertion/Removal Tool	809-203	N/A

Contact Part Numbers		
Contact Type	Wire Size	Part Number
Pin	#20 - #24	809-204
Socket	#20 - #24	809-205

Crimp Tensile Strength		
Wire Gage	Silver or Tin Coated Copper Wire*	Nickel Coated Copper Wire*
#20	20	19
#22	12	8
#24	8	6

\* Values are in pounds and are minimums.