

## Sloped Aluminum Consoles *1456 Series*

### Key Features:



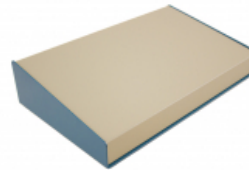
- Aluminum cases 0.081" (2 mm) thick aluminum.
- Aluminum top panel sizes to 14" wide are 0.064" thick aluminum. Larger sizes are 0.081" thick.
- Sold pre-assembled with a textured blue case and a choice of a contempora grey (beige) or a black top panel.
- Comes with self adhesive rubber feet and required mounting hardware.
- Some models available with walnut sides - see series **1456CWW**
- Replacement screws **1421J6** (#6-32 Philips head sheet metal screws, pack of 6).



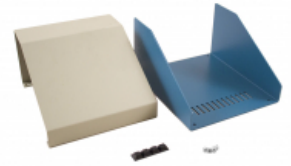
### Photo Features:



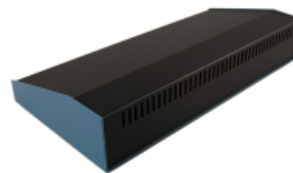
Vents on rear and bottom



All models have a blue base.  
Available with a beige or black top.



Shown unassembled



### Accessories

- Sheet Metal Screws

### Enclosures

Slope	Beige Top w/ Blue Case	Black Top w/ Blue Case	Black Top w/ Black Case	Width	Depth	Rear Height	Front Height
None	1456NEK4WHBU	1456NEK4BKBU	1456NEK4BKBK	6.00	10.00	4.00	4.00
10 Degrees	1456FE1WHBU	1456FE1BKBU	1456FE1BKBK	6.50	5.50	2.50	1.50
10 Degrees	1456PH1WHBU	1456PH1BKBU	1456PH1BKBK	14.00	8.30	3.00	1.50
10 Degrees	1456RL1WHBU	1456RL1BKBU	1456RL1BKBK	17.00	11.30	3.50	1.50

Slope	Beige Top w/ Blue Case	Black Top w/ Blue Case	Black Top w/ Black Case	Width	Depth	Rear Height	Front Height
10 Degrees	1456WL1WHBU	1456WL1BKBU	1456WL1BKBK	20.00	11.30	3.50	1.50
15 degrees	1456CE2WHBU	1456CE2BKBU	1456CE2BKBK	4.00	5.50	2.00	1.10
15 Degrees	1456FE2WHBU	1456FE2BKBU	1456FE2BKBK	6.50	5.50	2.00	1.10
15 Degrees	1456FH3WHBU	1456FH3BKBU	1456FH3BKBK	6.50	8.30	3.00	1.30
15 Degrees	1456FH2WHBU	1456FH2BKBU	1456FH2BKBK	6.50	8.50	2.00	1.10
15 Degrees	1456KH3WHBU	1456KH3BKBU	1456KH3BKBK	10.00	8.30	3.00	1.30
15 Degrees	1456KL3WHBU	1456KL3BKBU	1456KL3BKBK	10.00	11.30	3.00	1.30
15 Degrees	1456PH3WHBU	1456PH3BKBU	1456PH3BKBK	14.00	8.30	3.00	1.30
15 Degrees	1456PL3WHBU	1456PL3BKBU	1456PL3BKBK	14.00	11.30	3.00	1.30
15 Degrees	1456RH3WHBU	1456RH3BKBU	1456RH3BKBK	17.00	8.30	3.00	1.30
15 Degrees	1456RL3WHBU	1456RL3BKBU	1456RL3BKBK	17.00	11.30	3.00	1.30
15 Degrees	1456WH3WHBU	1456WH3BKBU	1456WH3BKBK	20.00	8.30	3.00	1.30
15 Degrees	1456WL3WHBU	1456WL3BKBU	1456WL3BKBK	20.00	11.30	3.00	1.30
30 Degrees	1456CE3WHBU	1456CE3BKBU	1456CE3BKBK	4.00	5.50	3.00	1.10
30 Degrees	1456FE3WHBU	1456FE3BKBU	1456FE3BKBK	6.50	5.50	3.00	1.10
30 Degrees	1456FG4WHBU	1456FG4BKBU	1456FG4BKBK	6.50	7.20	4.00	1.10
30 Degrees	1456KE3WHBU	1456KE3BKBU	1456KE3BKBK	10.00	5.50	3.00	1.10
30 Degrees	1456KG4WHBU	1456KG4BKBU	1456KG4BKBK	10.00	7.20	4.00	1.10
30 Degrees	1456KK4WHBU	1456KK4BKBU	1456KK4BKBK	10.00	10.20	4.00	1.10
30 Degrees	1456PG4WHBU	1456PG4BKBU	1456PG4BKBK	14.00	7.25	4.00	1.10
30 Degrees	1456PK4WHBU	1456PK4BKBU	1456PK4BKBK	14.00	10.20	4.00	1.10
30 Degrees	1456RK4WHBU	1456RK4BKBU	1456RK4BKBK	17.00	10.20	4.00	1.10
30 Degrees	1456WK4WHBU	1456WK4BKBU	1456WK4BKBK	20.00	10.20	4.00	1.10

Tags: instrument enclosure, sloped, instrument case, aluminum case, console

Data subject to change without notice.

© 2026. Hammond Manufacturing Ltd. All rights reserved.