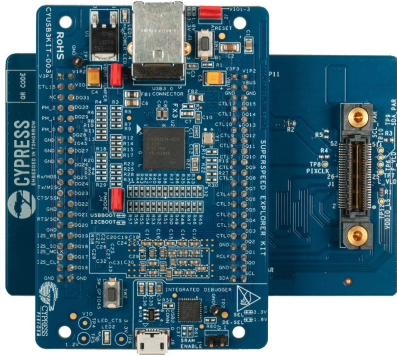
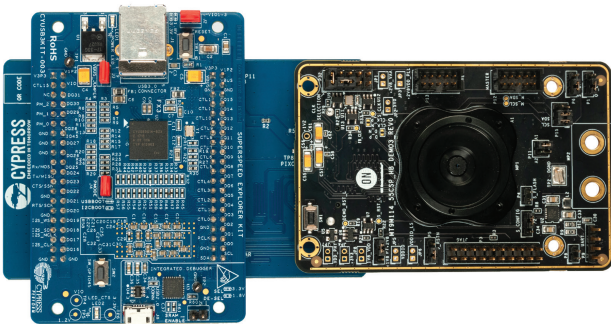


CYUSB3ACC-004A (INTERCONNECT BOARD FOR ON SEMICONDUCTOR IMAGE SENSOR) QUICK START GUIDE

1. Connect the EZ-USB® FX3™ SuperSpeed Explorer Kit (CYUSB3KIT-003) to the ON Semiconductor Image Sensor Interconnect Board (CYUSB3ACC-004A)



2. Connect the ON Semiconductor Image Sensor Board (MT9M114_55CSP_HB_DEMO3_REV0) to the CYUSB3ACC-004A Board



Note : CYUSB3KIT-003 and ON Semiconductor Image Sensor Board (MT9M114_55CSP_HB_DEMO3_REV0) are not part of this kit

CYUSB3ACC-004A (INTERCONNECT BOARD FOR ON SEMICONDUCTOR IMAGE SENSOR) QUICK START GUIDE

3. Set the Jumpers on the boards as shown below

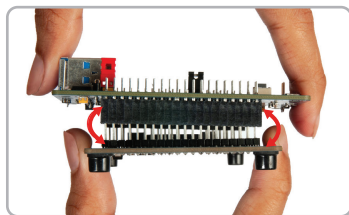
ON Semiconductor Image Sensor Board (MT9M114_55CSP_HB_DEMO3_REVO)

Jumper/ Header No.	Jumper/ Header Name	Jumper Setting
P1	OE_L	1-2
P2	CONFIG	2-3
P4	FLASH	Open
P5	TRST	1-2
P6	SADDR	1-2
P7	+VDDIO	2-3
P8	UART	Open
P11	EEPROM	Closed (A1 column)
P15	I2C connector	1-2 & 3-4
P32	CLOCK SELECTION	3-5 & 1-2

Cypress EZ-USB FX3 Superspeed Explorer Kit (CYUSB3KIT-003)

Jumper/ Header No.	Jumper/ Header Name	Jumper Setting
J2	VIO1_3	Closed
J3	VBUS_JUMPER	Closed
J4	PMODE	Closed
J5	SRAM_ENABLE	Open

4. Learn to use FX3 in applications involving image sensors with the application note **AN75779 - How to Implement an Image Sensor Interface with EZ-USB® FX3™ in a USB Video Class (UVC) Framework** available at www.cypress.com/AN75779. Refer to sections 6 to 8 for the instructions to stream video from the Image Sensor to a PC using FX3



Note:

Please take care when removing the interconnect board from the SuperSpeed Explorer Kit board

The suggested removal method is shown in the picture. Hold the interconnect board and use a rocking motion to separate the boards safely

For the latest information about this interconnect board and to download the hardware files, visit www.cypress.com/CYUSB3ACC-004A

For the latest information about EZ-USB FX3 SuperSpeed Explorer Kit (CYUSB3KIT-003) and to download Kit Software and Hardware files, visit www.cypress.com/SuperSpeedExplorerKit