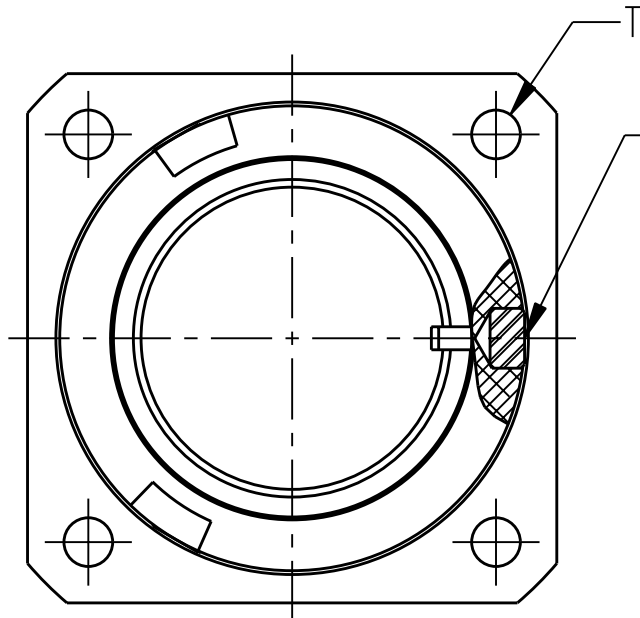
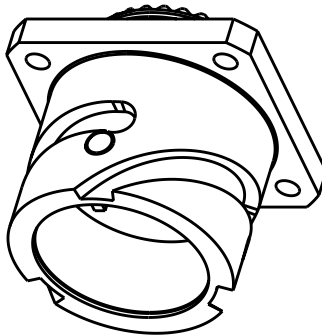


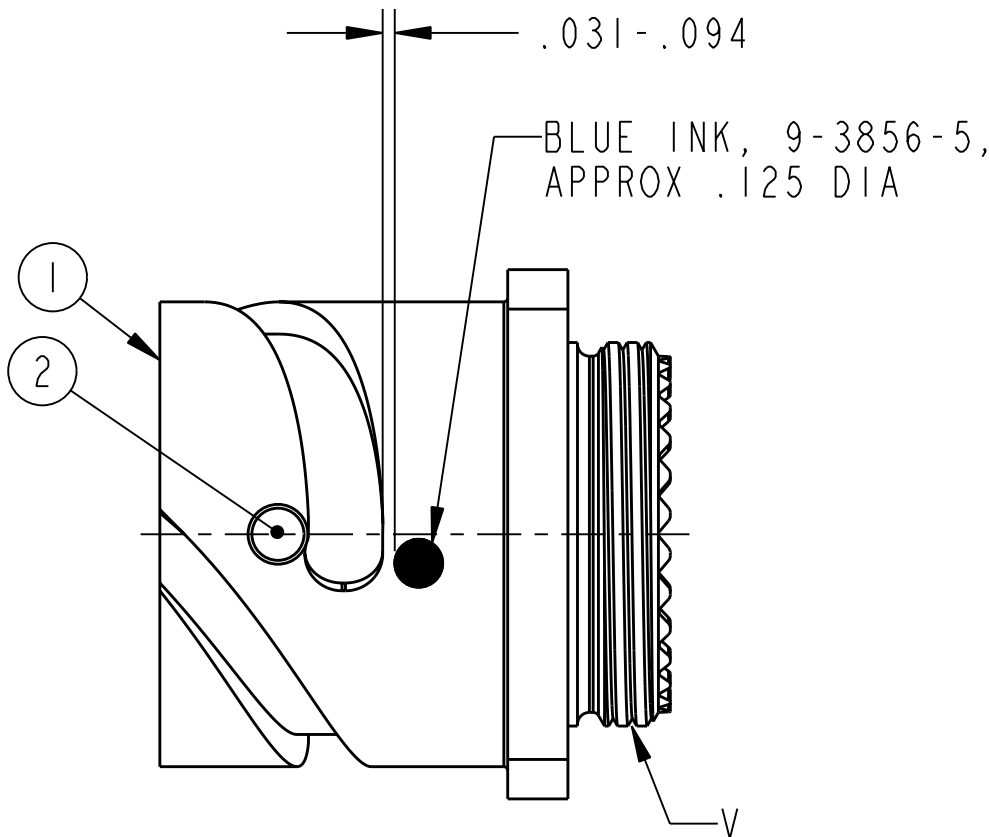
REV. B	SHEET 1 OF 1	10-610102
REVISIONS		
LTR	DESCRIPTION	DATE
B	(CL11) SEE CHANGE NOTICE ECN: 96019	

PART NUMBER	SIZE	PIN	T PLATED THREAD	V THREAD -2A	MEAN SURFACE AREA SQ. IN.
10-610102-11()	10SL	10-564865-1	.164-32 UNC-2B	.6250-24 UNEF	5.1160
10-610102-14()	14S	10-564865-1	.164-32 UNC-2B	.7500-20 UNEF	7.1684
10-610102-16()	16S	10-564865-1	.164-32 UNC-2B	.8750-20 UNEF	8.1159
10-610102-17()	16	10-564865-2	.164-32 UNC-2B	.8750-20 UNEF	10.3523
10-610102-18()	18	10-564865-2	.164-32 UNC-2B	1.0000-20 UNEF	11.6921
10-610102-20()	20	10-564865-2	.164-32 UNC-2B	1.1250-18 UNEF	13.1545
10-610102-22()	22	10-564865-2	.164-32 UNC-2B	1.2500-18 UNEF	14.5865
10-610102-24()	24	10-564865-2	.190-24 UNC-2B	1.3750-18 UNEF	16.7766
10-610102-28()	28	10-564865-2	.190-24 UNC-2B	1.6250-18 UNEF	20.0434
10-610102-32()	32	10-564865-2	.250-20 UNC-2B	1.8750-16 UN	23.9251
10-610102-36()	36	10-564865-2	.250-20 UNC-2B	2.0625-16 UN	28.3474
10-610102-40()	40	10-564865-2	.250-20 UNC-2B	2.3125-16 UN	32.5608

SEE NOTE 1



PRESS PIN  
.000-.010  
BELOW SURFACE  
3 PLACES  
SEE NOTE 2



2. ASSEMBLE PINS PER 9-9283 FOLLOWING PLATING PER NOTE 1.

1. TO COMPLETE PART NUMBER, ADD APPLICABLE LAST CHARACTER SUFFIX FOR DESIRED FINISH:

FINISH	SUFFIX	SPEC
OLIVE DRAB CADMIUM PLATE	-XX3	9-3047
NICKEL ALLOY PLATE	-XXG	9-6914
NICKEL ALLOY PLATE,	-XXH	9-6972
BLACK ZINC COBALT, COND	-XXX	9-9181-1
BLACK ZINC ALLOY	-XXY	9-9181
BLACK ANODIZE	-XXZ	9-9182

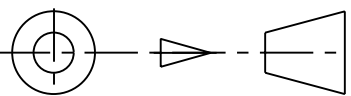
NOTES:

THE USE OF THIS DOCUMENT IS UNLIMITED.  
HOWEVER, DOCUMENTS REFERENCED HEREON  
MAY CONTAIN LIMITED RIGHTS DATA.

N/A	PRO/ENGINEER INFORMATION
N/A	Pro/e Model Used:
	10-590098-ASSEM
	Drawing Name:
	10-610102

NEXT ASSEMBLY

UNLESS OTHERWISE SPECIFIED	SPECIFICATIONS
LINEAR DIMENSIONS ARE IN INCHES TOLERANCES: .XXXX = $\pm .0005$ ANGLES = $\pm 2^\circ$ .XXX = $\pm .010$ .XX = $\pm .03$ .X = $\pm .1$  DIM. & TOL. PER ASME Y14.5M; DRM PER MIL-DTL-31000; OTHER Amphenol Sds. PER 9-3800  LEGENDS: = FLAG NOTE CALL OUT REFERENCE ONLY	MATERIAL SPEC.  N/A
	PROCESS SPEC.  SEE NOTE 1 9-3856-5 9-9283

2	3	SEE COLUMN	PIN, WEAR	
I	I	10-606462-XXB	SHELL	
POS	QTY	PART NUMBER	DESCRIPTION	NOTE
PARTS LIST				
APPROVALS		DATE	<div>AMPHENOL CORPORATION</div> <div>40-60 DELAWARE AVENUE SIDNEY, N.Y. 13838</div> <div>SHELL, CONNECTOR RECEPTACLE, TYPE GT030FF, MACHINED ONLY, PLATED</div>	
PREPARED BY A.Prescott		06-Nov-03		
ENGINEER IN CHARGE R.Barnes				
DESIGN MANAGER D.Gallusser				
DESIGN ACTIVITY GROUP C & I				
THIRD ANGLE PROJECTION				
				
SIZE C	CAGE CODE 77820	DOCUMENT NO. 10-610102	REV. B	
SCALE: 2.0		REF: 10-590098	SHEET 1 OF 1	