



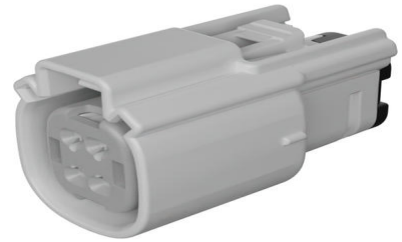
Part Number : [1600742004](#)

Product Description : MX150 Mat-Sealed Female Connector Assembly, Dual Row, 4 Circuits, UL 94V-0, Keying Option D, without Connector Position Assurance, Stone Gray

Series Number : 160074

Status : Active

Product Category : Connector Housings



Documents and Resources

Drawings

[1600742004 sd.pdf](#)

[PK-31300-635-001.pdf](#)

[PK-31300-903-001.pdf](#)

3D Models and Design Files

[STEP AP242](#)

[SOLIDWORKS](#)

[Creo](#)

Specifications

[AS-33472-100-001.pdf](#)

[AS-33472-100-CH-001.pdf](#)

[AS-33472-100-FR-001.pdf](#)

[AS-33611-001-001.pdf](#)

[PS-160074-0001-001.pdf](#)

[1600742276-TS-000.pdf](#)

Product Environment Compliance

Compliance

GADSL/IMDS	Compliant
China RoHS	Not Relevant
EU ELV	Compliant per 2000/53/EC
Low-Halogen Status	Not Relevant

REACH SVHC	Contains Dodecamethylcyclohexasiloxane; Decamethylcyclopentasiloxane; Octamethylcyclotetrasiloxane per D(2025)7771-DC (04 Feb 2026)
EU RoHS	Compliant per EU 2015/863

Compliance Statements

- EU RoHS
- REACH SVHC
- Low-Halogen

Industry Documents

- IPC 1752A Class C
- IPC 1752A Class D
- Molex Product Compliance Declaration
- IEC-62474
- chemSHERPA (xml)

Substances of Interest

- PFAS

EU RoHS Certificate of Compliance

Additional Product Compliance Information

Part Details

General

Status	Active
Category	Connector Housings
Series	160074
Description	MX150 Mat-Sealed Female Connector Assembly, Dual Row, 4 Circuits, UL 94V-0, Keying Option D, without Connector Position Assurance, Stone Gray
Application	Power, Wire-to-Board, Wire-to-Wire, Automotive
Product Name	MX150
UPC	191128118385

Agency

UL	E29179
----	--------

Physical

Circuits (maximum)	4
Color - Resin	Stone Gray
Flammability	94V-0
Gender	Receptacle
Glow-Wire Capable	No
Keying to Mating Part	Yes
Lock to Mating Part	Yes
Material - Resin	Nylon
Net Weight	8.044/g
Number of Rows	2
Packaging Type	Bag
Panel Mount	No
Pitch - Mating Interface	3.50mm
Polarization	D
Polarized to Mating Part	Yes
Stackable	No
Temperature Range - Operating	-40° to +125°C

Mates With / Use With

Use with Part(s)

Description	Part Number
MX150 Sealed Receptacle Cavity Plug	<u>343454001</u>
MX150 Female Terminals	<u>33001</u>
MX150 Female Terminals	<u>33012</u>

This document was generated on May 06, 2026