



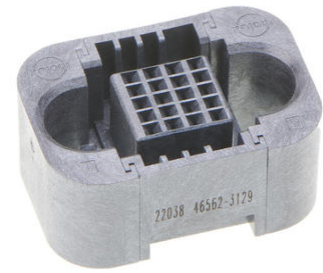
Part Number : [465623129](#)

Product Description : EXTreme Ten60Power Vertical Receptacle with Side Guides, 20 Signal Circuits, Press Fit Tail

Series Number : 46562

Status : Active

Product Category : Board-to-Board Connectors



Documents and Resources

Drawings

[465623129 sd.pdf](#)

[465621001-PK-000.pdf](#)

3D Models and Design Files

[STEP AP242](#)

[SOLIDWORKS](#)

[Creo](#)


[Symbol and Footprint \(Multi-Format\)](#)

Specifications

[PS-46436-100-001.pdf](#)

Product Environment Compliance

Compliance

GADSL/IMDS	Compliant with Exemption 44; 34; 33
China RoHS	 per SJ/T 11365-2006
EU ELV	Not Relevant
Low-Halogen Status	Low-Halogen per IEC 61249-2-21
REACH SVHC	Not Contained per D(2025)7771-DC (04 Feb 2026)
EU RoHS	Compliant per EU 2015/863

[Compliance Statements](#)

- EU RoHS
- REACH SVHC
- Low-Halogen

Industry Documents

- IPC 1752A Class C
- IPC 1752A Class D
- Molex Product Compliance Declaration
- IEC-62474
- chemSHERPA (xml)

Substances of Interest

- PFAS

EU RoHS Certificate of Compliance

Additional Product Compliance Information

Part Details

General

Status	Active
Category	Board-to-Board Connectors
Series	46562
Description	EXTreme Ten60Power Vertical Receptacle with Side Guides, 20 Signal Circuits, Press Fit Tail
Application	Board-to-Board, Signal
Comments	See Product Specification for details
Component Type	Receptacle
Keyword	Ten60
Product Name	EXTreme Ten60Power
UPC	195842813717

Agency

CSA	LR19980
UL	E29179

Electrical

Current - Maximum per Contact	4.5A
Grounding to PCB	No

Voltage - Maximum	120V
-------------------	------

Physical

Circuits (Loaded)	20
Circuits (maximum)	20
Color - Resin	Black
Durability (mating cycles max)	200
Flammability	94V-0
Glow-Wire Capable	No
Guide to Mating Part	Side, Yes
Keying to Mating Part	No
Lock to Mating Part	No
Material - Metal	Copper Alloy
Material - Plating Mating	Gold
Material - Plating Termination	Tin
Material - Resin	Liquid Crystal Polymer (LCP)
Net Weight	6.003/g
Number of Rows	5
Orientation	Vertical
Packaging Type	Tray
PCB Locator	No
PCB Retention	Yes
PCB Thickness - Recommended	1.58mm
PC Tail Length	2.50mm
Pitch - Mating Interface	2.00mm
Plating min - Mating	0.762µm
Plating min - Termination	2.540µm
Polarized to Mating Part	Yes
Polarized to PCB	Yes
(p)ower-(s)ignal Configuration	0p - 20s
Stackable	No
Temperature Range - Operating	-40° to +105°C
Termination Interface Style	Through Hole - Compliant Pin

Mates With / Use With

Mates with Part(s)

Description	Part Number
EXTreme Ten60Power Right-Angle Plug with Side Guides, 20 Signal Circuits, Press Fit Tail	<u>464373129</u>

This document was generated on May 08, 2026