



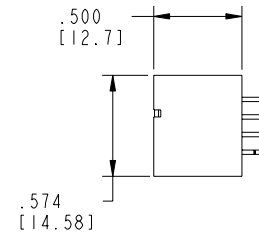
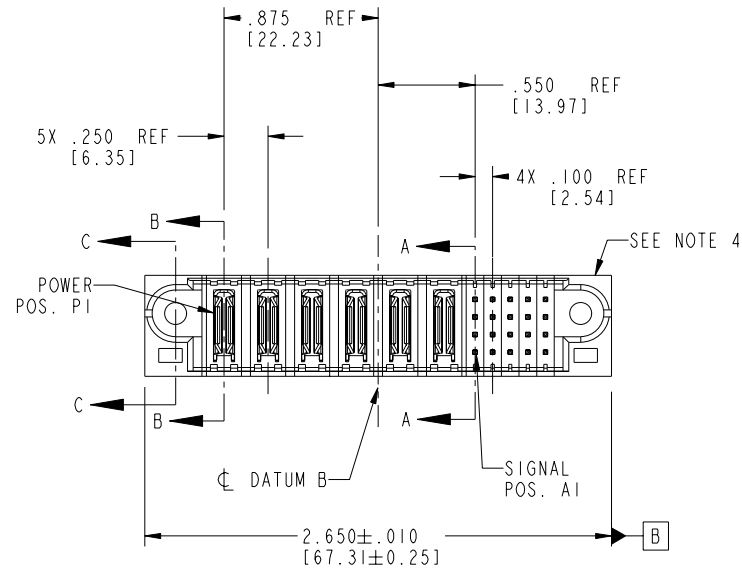


Tous droits strictement réservés. Reproduction ou communication a des tiers interdite sous quelque forme que ce soit sans autorisation écrite du propriétaire. Propriété de c FCI. Droits de reproduction FCI.

FCI

All rights strictly reserved. Reproduction or issue to third parties in any form whatever is not permitted without written authority from the proprietor. Property of FCI. Copyright FCI.

PRODUCT NO.	ROWS	POWER						SIGNAL					E2	
		E1	P1	P2	P3	P4	P5	P6	1	2	3	4		5
51712-009-- NOTE③	D C B A		PA	PA	PA	PA	PA	PA	E	E	E	E	E	
									E	E	E	E	E	



CODE	DIM "M" MATING LENGTH	CONTACT TYPE
PA	N/A [N/A]	POWER
H	.220 [5.59]	SIGNAL
E	.270 [6.86]	SIGNAL
HA	N/A [N/A]	HOLD-DOWN

mat'l code				SEE NOTE 2		tolerances unless otherwise specified		CUSTOMER		FCI www.fciconnect.com			
ltr	ecn no.	dr	date	linear		.XX±.01/0.X±0.3		COPY		projection			
A	DG05-0544	CS	12/13/05			.XXX±.005/0.XX±0.13				title 6P + 20S			
				angles		.XXX±.0020/0.XXX±0.051				VERTICAL STB HEADER			
				dr	CS	12/13/05		INCH/MM		product family PwrBlade			
				enrg	STEVEN WANG	12/13/05		scale 1:1		size			
				chr	VICTOR LIN	12/13/05				dwg no 51712-009			
				appd	JOSEPH HSIA	12/13/05				code 213			
sheet index		revision	A	A	A	A				sheet 1 of 4			
		sheet	1	2	3	4							

cage code 22526

PDM: Rev:A

STATUS:Released

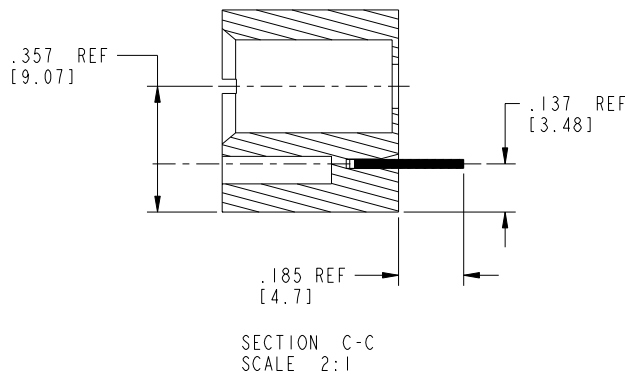
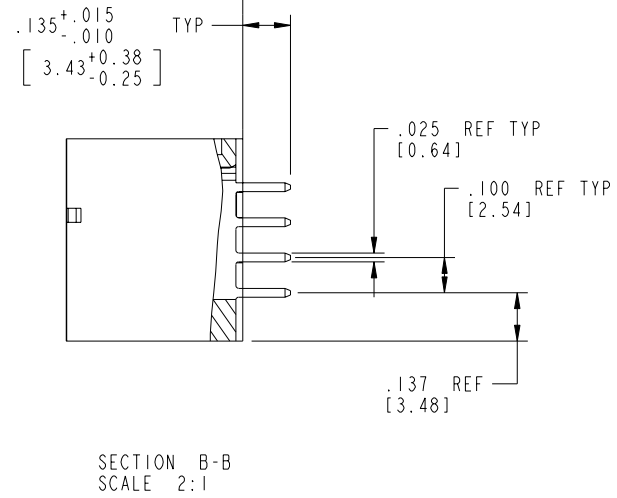
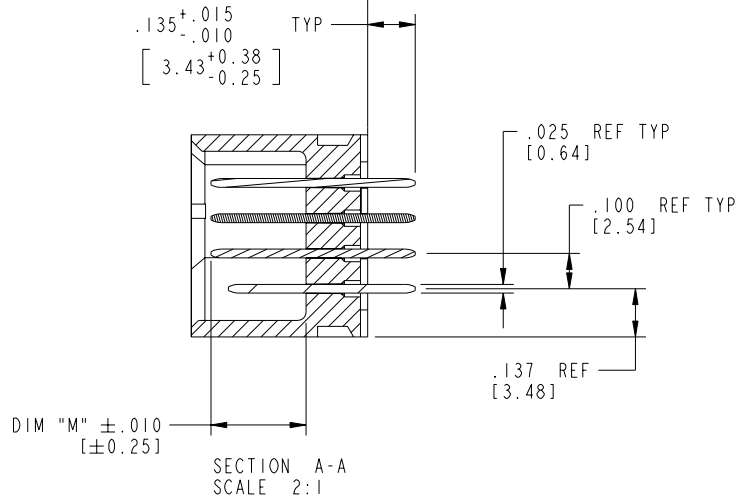
Printed: Sep 20, 2006


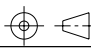
Tous droits strictement réservés. Reproduction ou communication a des tiers interdite sous quelque forme que ce soit sans autorisation écrite du propriétaire. Propriété de c FCI. Droits de reproduction FCI.

A
FCI

All rights strictly reserved. Reproduction or issue to third parties in any form whatever is not permitted without written authority from the proprietor. Property of FCI. Copyright FCI.

PRODUCT NUMBER
51712-009--
NOTE ③



mat'l code SEE NOTE 2				tolerances unless otherwise specified		CUSTOMER		 www.fciconnect.com	
ltr	ecn no.	dr	date	linear	$.XX \pm .01 / 0.X \pm 0.3$ $.XXX \pm .005 / 0.XX \pm 0.13$ $.XXXX \pm .0020 / 0.XXX \pm 0.051$	projection	COPY		
A				angles	$0^\circ \pm 2^\circ$			title	6P + 20S VERTICAL STB HEADER
				dr	CS 12/13/05	INCH/MM		product family	PwrBlade
				enr	STEVEN WANG 12/13/05	scale		size	dwg no
				chr	VICTOR LIN 12/13/05	1:1		A	51712-009
				appd	JOSEPH HSIA 12/13/05				code
sheet index	revision sheet								213
									2 of 4
								cage code	22526
									4

PDM: Rev:A

STATUS: Released

Printed: Sep 20, 2006

All rights strictly reserved. Reproduction or issue to third parties in any form whatever is not permitted without written authority from the proprietor. Property of FCI. Copyright FCI.

AFCI



All rights strictly reserved. Reproduction or issue to third parties in any form whatever is not permitted without written authority from the proprietor.
Property of FCI. Copyright FCI.

AFCI

4

51712-009--
NOTE(3)

1. DIMENSIONS AND TOLERANCES ARE IN ACCORDANCE WITH
ASME Y14.5M, 1994 UNLESS OTHERWISE SPECIFIED.

(2) HOUSING MATERIAL: UL 94 V-0 GLASS FILLED

3. PLATING:

51712-009LF Singal Pin:30u"/0.76um Au OVER 50u"/1.27um Ni ON THE CONTACT AREA.
AND 78u"/2.00um Sn PLATING OVER 50u"/1.27um Ni ON THE TERMINATION SECTION.
Power Pin:30u"/0.76um Au OVER 50u"/1.27um Ni ON THE CONTACT AREA,
AND 78u"/2.00um Sn PLATING OVER 50u"/1.27um Ni ON THE TERMINATION SECTION.

THE HOUSING WILL WITHSTAND EXPOSURE TO 260° PEAK TEMPERATURE FOR 10 SECONDS IN A WAVE SOLDER APPLICATION WITH A CIRCUIT BOARD.

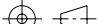
5. PRODUCT SPECIFICATION GS-12-149.
APPLICATION SPECIFICATION BUS-20-067.

PCB NOTES:

8. MOUNTING HOLES, WHERE APPLICABLE, ARE UNPLATED.

(10) "DIM XXX" TO BE DETERMINED BY THE CUSTOMER.

(11) CONNECTOR KEEP-OUT ZONE.

mat'l code				SEE NOTE 2		tolerances unless otherwise specified		CUSTOMER		<div><div>A</div><div>FCI</div><div>www.fciconnect.com</div></div>	
ltr	ecn no.	dr	date	linear	$.XX \pm .01/0.X \pm 0.3$		COPY		<div>projection</div> <div></div>	title	
A					$.XXX \pm .005/0.X \pm 0.13$					6P + 20S	
					$.XXXX \pm .0020/0.XXX \pm 0.051$					VERTICAL STB HEADER	
					$0^\circ \pm 2^\circ$						
				angles			INCH/MM		product family		
				dr	CS	12/13/05			PwrBlade		
				enrg	STEVEN WANG	12/13/05			size		
				chr	VICTOR LIN	12/13/05			dwg no		
				appd	JOSEPH HSIA	12/13/05			A		
sheet index		revision sheet					scale		1:1		
Pro/E						3			cage code		
									22526		
									4		

4

Printed: Sep 20, 2006