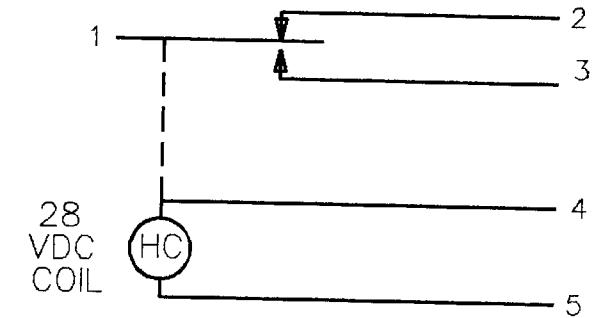
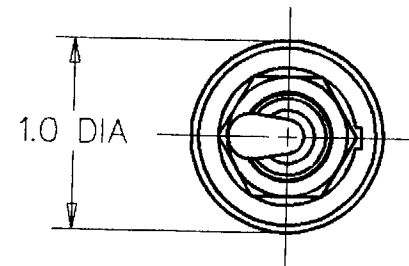


**MICRO SWITCH**  
FREEPORT, ILLINOIS, U. S. A.  
A DIVISION OF HONEYWELL  
FED. MFG. CODE 91929

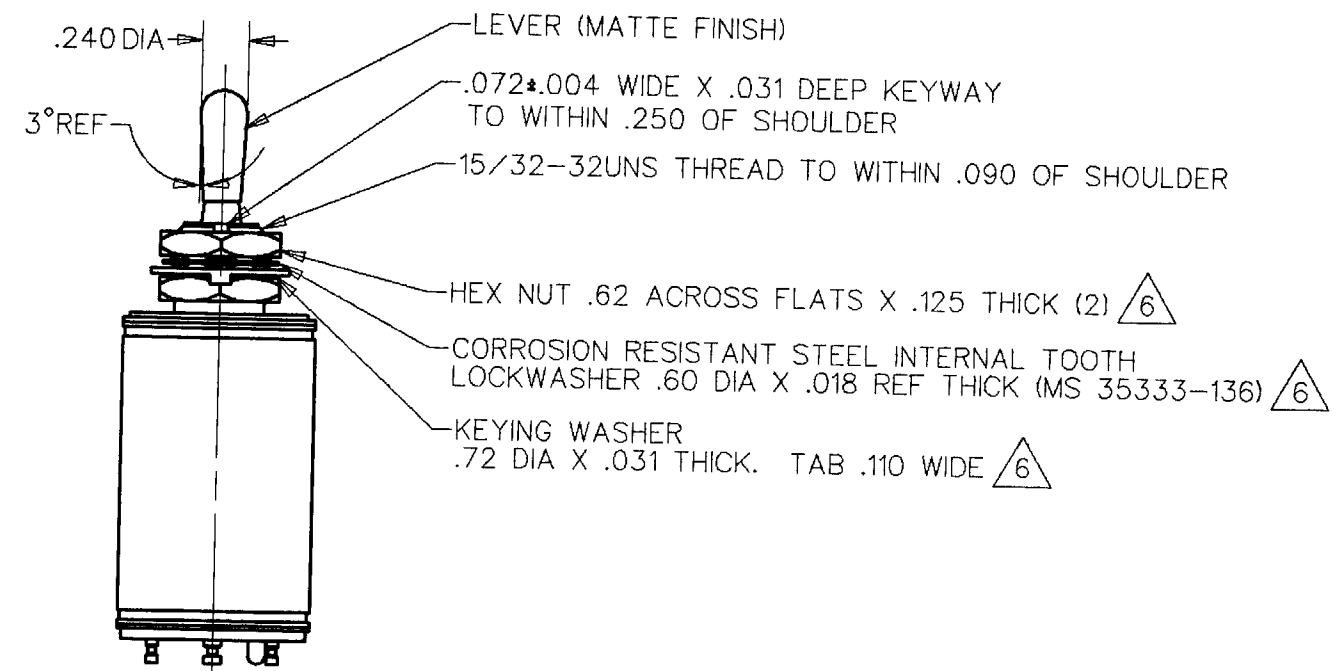
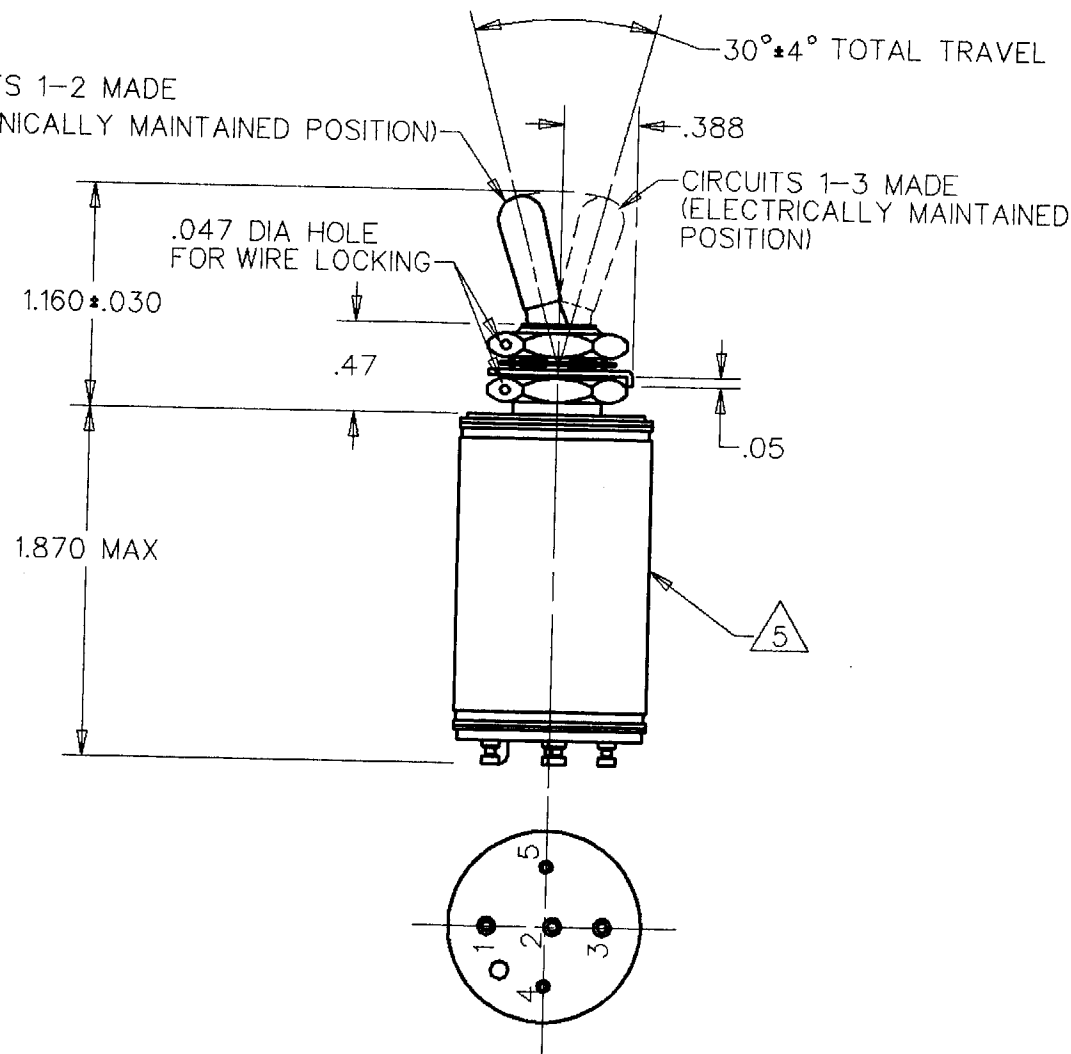
# SWITCH - TOGGLE (MAGNETIC HOLD-IN)

CATALOG LISTING  
**25ET1-T**



CIRCUIT DIAGRAM  
(MECHANICALLY MAINTAINED  
POSITION)

CIRCUITS 1-2 MADE  
(MECHANICALLY MAINTAINED POSITION)



## NOTES

- 1 - EXPOSED PARTS ARE OF CORROSION RESISTANT MATERIAL OR ARE SUITABLY PROTECTED TO PREVENT CORROSION, ENCLOSURE FINISHED WITH BLUE EPOXY BASED ENAMEL COLOR NO. 25184 PER FEDERAL STANDARD 595
- 2 - SWITCH SEALED PER MIL-S-5594
- 3 - HOLD IN VOLTAGE: THE MINIMUM SPECIFIED VOLTAGE AT WHICH THE LEVER WILL REMAIN ACTUATED. HOLD IN MAY OCCUR AT A LOWER VALUE. DROP OUT VOLTAGE: THE VOLTAGE RANGE IN WHICH THE LEVER WILL BE RELEASED
- 4 - CIRCUITS CAN BE TRANSFERRED MANUALLY. ENERGIZING THE COIL WILL NOT CAUSE TRANSFER OF CIRCUITS
- 5 - CIRCUIT IDENTIFICATION IS SHOWN ON SWITCH
- 6 - HARDWARE MAY BE FURNISHED UNASSEMBLED PER MIL-S-5594

DDM/CAD

THIS DRAWING COVERS A PROPRIETARY ITEM AND IS THE PROPERTY OF MICRO SWITCH, A DIVISION OF HONEYWELL. THIS DRAWING IS NOT TO BE COPIED OR USED WITHOUT THE APPROVAL OF MICRO SWITCH

## CHARACTERISTICS

### SOLENOID RATING AT 20° C

STEADY STATE LIMITS --- 20-29 VDC  
HOLD IN --- 10 VDC  
DROP OUT --- 0-10 VDC  
COIL RESISTANCE --- 220 OHM MIN  
OPERATING FORCE --- 7 LBS MAX

OVERRIDE FORCE AT 29 VDC-10 LBS MAX

## ELECTRICAL DATA

CONTACT ARRANGEMENT  
SPDT

VOLTAGE	RATINGS IN AMPHERES							
	SEA LEVEL				65,000 FT			
28 VOLTS DC	INRUSH	RES	IND	MOTOR	INRUSH	RES	IND	MOTOR
	4	3	4		4	2.5	4	

SCALE FULL

DO NOT SCALE PRINT

## TOLERANCES

APPLY TO DESIGN UNITS. CONVERSIONS ARE ONLY FOR REFERENCE. UNLESS NOTED, TOLERANCES ARE ±

ONE PLACE	(.0)	±.030
TWO PLACES	(.00)	±.015
THREE PLACES	(.000)	±.005
ANGLES		±

RAW MATERIAL-COMMERCIAL STANDARD  
THIRD ANGLE PROJECTION



WEIGHT 4.0 OZ MAX

25ET1-T

M

DRAWING  
NUMBER

4

ISSUE

REVISIONS  
A CAD  
MAM  
29 OCT 85

26 NOV 85

DAW

29 OCT 85  
MAM