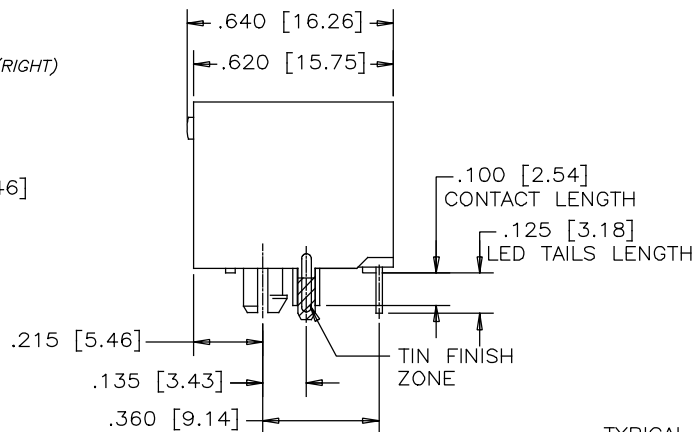
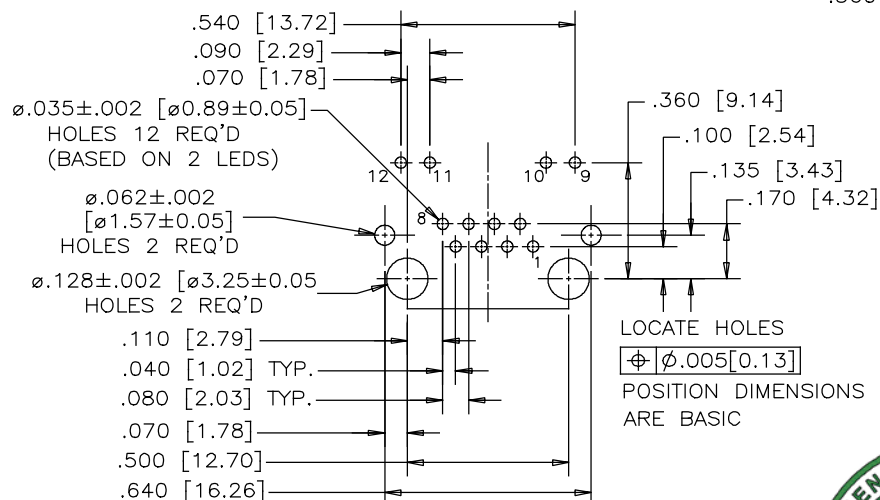


FRONT VIEW

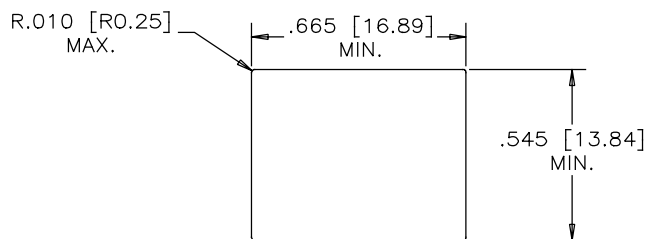


SIDE VIEW



RECOMMENDED P.C.B. LAYOUT

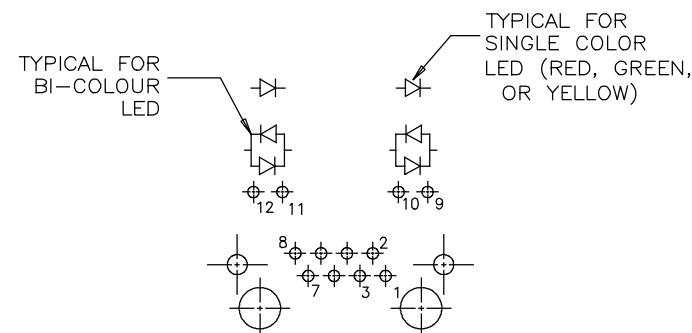
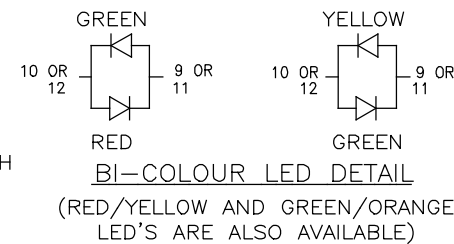
(COMPONENT SIDE OF BOARD)
PCB THICKNESS: 0.062 ± 0.002 [1.57±0.05]



RECOMMENDED PANEL CUTOUT



REVISIONS			
REV	DESCRIPTION, ECN, EAR NO.	DATE	APP'D
A	PROPOSAL	AUG 09/16	L.CHAN
B	CHANGE TO TIN FINISH	JUN 20/17	L.CHAN



LED SCHEMATIC

NOTES:

1. MATERIALS:

PLASTIC HOUSING: HIGH TEMPERATURE THERMOPLASTIC
FLAMMABILITY RATING UL 94V-0, COLOUR: BLACK

CONTACTS:

PHOSPHOR BRONZE
PLATING: GOLD ON MATING SURFACES
(SEE PART NO. FOR THICKNESS).
50 μ [1.27 MICRONS]
MIN. NICKEL UNDERPLATE
100 μ [2.54 MICRONS]
MIN. MATTE TIN ON CONTACT TAILS.

SHIELD:

STAINLESS STEEL WITH TIN FINISH ON SOLDER TAIL

PART NUMBER: RJHSE-XF8X

CONTACT GOLD PLATING

E=RJ45 FLAT CONTACT 6u"
G=RJ45 FLAT CONTACT 15u"
J=RJ45 FLAT CONTACT 30u"
5=RJ45 FLAT CONTACT 50u"
0=RJ45 FLAT CONTACT 1u"

REFER TO LED OPTIONS DRAWING
FOR ORDERING CODES

UNLESS SPECIFIED OTHERWISE		DRAWN	CHANG WEI	DATE	AUG 09/16	Amphenol Canada Corp. www.amphenolcanada.com	
PRIMARY UNITS	INCH	CHECKED	L.CHAN	DATE	AUG 09/16		
SECONDARY UNITS	MILLIMETER	M.E. APP'D				TITLE HIGH SPEED, RJ45, MODULAR JACK, 8 POSITION, 8 CONTACTS, SHIELDED WITH LEDs - RoHS COMPLIANT	
REFERENCE IN PARENTHESES		Q.A. APP'D					
GENERAL TOLERANCES		DWG APPR.				DWG. NO. P-RJHSE-XF8X	
1 DECIMAL PLACE ± 0.025		ENG. REL. NO.					
2 DECIMAL PLACES ± 0.020		REF.				CODE ID NO. 03554 DWG SIZE: C SCALE: N/A SHEET 1 OF 1	
3 DECIMAL PLACES ± 0.015		THIRD ANGLE PROJECTION					
ANGULAR DEGREES $\pm 1.0^\circ$		DO NOT SCALE DRAWING				REV B	