



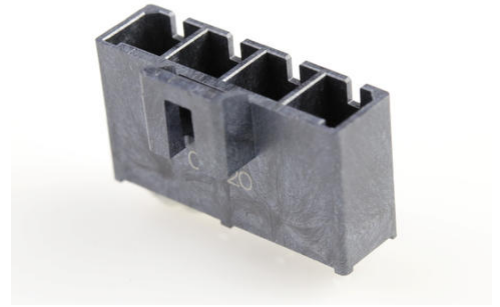
Part Number : [2002411114](#)

Product Description : Mega-Fit Vertical Header, 5.70mm Pitch, Single Row, 4 Circuits, Matte Tin (Sn) Plating, Glow-Wire Capable, Tray, Black

Series Number : 200241

Status : Active

Product Category : PCB Headers and Receptacles



Documents and Resources

Drawings

[2002411114 sd.pdf](#)

[2002411000-001.pdf](#)

3D Models and Design Files

[STEP AP242](#)

[SOLIDWORKS](#)

[Creo](#)

[Symbol and Footprint \(Multi-Format\)](#)

Specifications


[768232000-AS-000.pdf](#)

[1720631000-PS-000.pdf](#)

[1720631000-TS-000.pdf](#)

Product Environment Compliance

Compliance

GADSL/IMDS	Compliant with Exemption 44; 33
China RoHS	 per SJ/T 11365-2006
EU ELV	Not Relevant
Low-Halogen Status	Low-Halogen per IEC 61249-2-21
REACH SVHC	Not Contained per D(2025)7771-DC (04 Feb 2026)
EU RoHS	Compliant per EU 2015/863

Compliance Statements

- EU RoHS
- REACH SVHC
- Low-Halogen

Industry Documents

- IPC 1752A Class C
- IPC 1752A Class D
- Molex Product Compliance Declaration
- IEC-62474
- chemSHERPA (xml)

Substances of Interest

- PFAS

EU RoHS Certificate of Compliance

Additional Product Compliance Information

Part Details

General

Status	Active
Category	PCB Headers and Receptacles
Series	200241
Description	Mega-Fit Vertical Header, 5.70mm Pitch, Single Row, 4 Circuits, Matte Tin (Sn) Plating, Glow-Wire Capable, Tray, Black
Application	Power, Wire-to-Board
Component Type	PCB Header
Product Name	Mega-Fit
UPC	191130089512

Agency

CSA	152514
UL	E29179

Electrical

Current - Maximum per Contact	26.0A
Voltage - Maximum	600V AC (RMS)/DC

Physical

Breakaway	No
Circuits (Loaded)	4
Circuits (maximum)	4
Color - Resin	Black
Durability (mating cycles max)	25
First Mate / Last Break	No
Glow-Wire Capable	Yes
Guide to Mating Part	No
Keying to Mating Part	Yes
Lock to Mating Part	Yes
Material - Metal	High Conductivity Copper
Material - Plating Mating	Matte Tin
Material - Plating Termination	Matte Tin
Material - Resin	Liquid Crystal Polymer (LCP)
Net Weight	2.710/g
Number of Rows	1
Orientation	Vertical
Packaging Type	Tray
PCB Locator	No
PCB Retention	Yes
PCB Thickness - Recommended	1.58mm, 2.36mm
PC Tail Length	3.23mm
Pitch - Mating Interface	5.70mm
Pitch - Termination Interface	5.70mm
Plating min - Mating	1.520µm
Plating min - Termination	1.520µm
Polarized to Mating Part	Yes
Polarized to PCB	Yes
Temperature Range - Operating	-40° to +105°C
Termination Interface Style	Through Hole

Mates With / Use With

Mates with Part(s)

Description	Part Number
-------------	-------------

Mega-Fit Tangless TPA-Capable Single Row Receptacle Housings	<u>200456</u>
---	---------------

This document was generated on May 25, 2026