

PRODUCT NUMBER

10142802-0XXLF

NOTES:

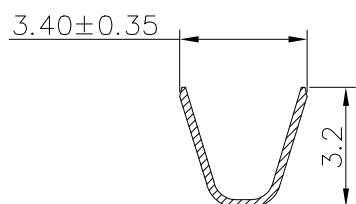
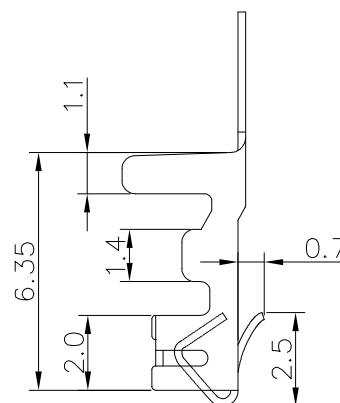
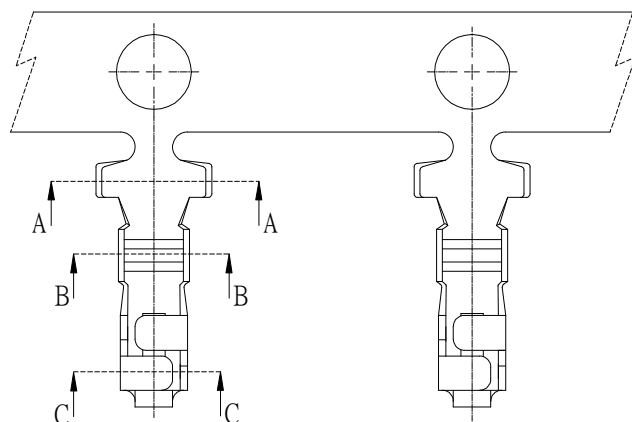
1. MATERIAL: 0.20mm THICK COPPER ALLOY
2. FINISH:
15U" NICKEL UNDER PLATING
60U" TIN ON SOLDER TAIL
3. APPLICABLE WIRES: AWG#20-#28
4. INSULATION O.D.: MAX 1.40mm
5. RoHS COMPLIANT
6. THIS TERMINAL IS USED WITH FCI HSG:10142801
7. PRODUCT SPEC: GS-12-1407.
8. PACKING SPEC: GS-14-2573.
9. PART NUMBER SCHEME:
10142802- 0 X X LF

FINISH:

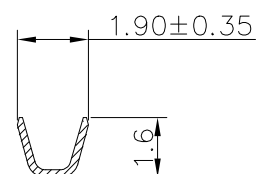
- 1: PRE-MATTE TIN PLATED
- 2: POST-MATTE TIN PLATED
- 3: PRE-BRIGHT TIN PLATED
- 4: POST-BRIGHT TIN PLATED
- 5: GOLD PLATED

Material:

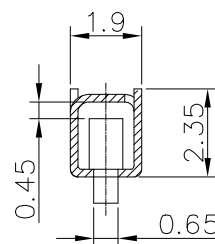
- 1: BRASS
- 2: PHOSPHOR BRONZE



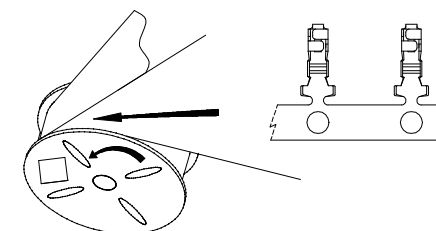
SEC A-A




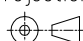


SEC B-B



SEC C-C



RAW INTO DIRECTION

mat'l. code				surface 		tolerance		projection 		product family WTB															
ltr		ecn no		dr		date		tolerances unless otherwise specified				title													
A				TONY		2017-02-16		angles		linear		.X±0.30				2.5mm Pitch Crimp Terminal									
										.XX±0.20															
								0°±5°		.XXX±0.10		scale N.T.S.													
								dr		TONY LENG		2017-02-16		dwg no				sheet 1 of 1		size					
								engr		TONY LENG		2017-02-16						10142802				A4			
								chr		ZK_HU		2017-02-16													
								appd		TIM_YAO		2017-02-16		type				Product		Customer		Drawing			
sheet index		revision		A				sheet		1															