



**Part Number :** [936010203](#)

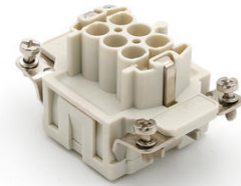
**Product Description :** Heavy-Duty Spring Terminal Insert, Female, 6-Pole, 16A, Silver (Ag) Plated Contacts, Size 6B «44x27»

**Series Number :** 93601

**Status :** Active

**Product Category :** Heavy-Duty Connectors

**Engineering Part Number :** 7306.5851.0




---

## Documents and Resources

---

### Product Environment Compliance

#### Compliance

GADSL/IMDS	Not Relevant
China RoHS	 per SJ/T 11365-2006
EU ELV	Not Relevant
Low-Halogen Status	Low-Halogen per IEC 61249-2-21
REACH SVHC	Contains Lead per D(2025)7771-DC (04 Feb 2026)
EU RoHS	Compliant with Exemption 6(c) per EU 2015/863

#### Compliance Statements

- EU RoHS
- REACH SVHC
- Low-Halogen

#### Industry Documents

- IPC 1752A Class C
- IPC 1752A Class D
- Molex Product Compliance Declaration
- IEC-62474
- chemSHERPA (xml)

#### Substances of Interest

- PFAS

[EU RoHS Certificate of Compliance](#)

[Additional Product Compliance Information](#)

[UKCA - Declaration of Conformity](#)

[CE - Declaration of Conformity](#)

---

## Part Details

### General

Status	Active
Category	Heavy Duty Connectors
Series	93601
Description	Heavy-Duty Spring Terminal Insert, Female, 6-Pole, 16A, Silver (Ag) Plated Contacts, Size 6B «44x27»
Component Type	Inserts - Spring Terminal
Insert Series	S-ES
Product Name	Heavy-Duty Connectors
Standard	CSA C22.2 NO. 182.3, EN 60664-1, EN 61984, UL 1977
UPC	887191876610

### Agency

CSA	256883
UL	E249674

### Electrical

Current - Maximum per Contact	16.0A
Voltage - Maximum	500V

### Physical

Component Size	6B «44x27»
Durability (mating cycles max)	500
Gender	Female
Insert Color	Grey
Material - Contact	Copper Alloy
Material - Insert	Polycarbonate

Material - Plating	Silver
Net Weight	52.200/g
Number of Rows	2
Packaging Type	Bag
Polarized to Mating Part	Yes
Poles	6
Stripping Length	9.00-11.00mm
Temperature Range - Operating	-40° to +125°C
Wire Size (AWG)	14-26
Wire Size mm <sup>2</sup>	0.14-2.50

---

## Mates With / Use With

### Mates with Part(s)

Description	Part Number
Heavy-Duty Spring Terminal Insert, Male, 6-Pole, 16A, Silver (Ag) Plated Contacts, Size 6B «44x27»	<u>936010205</u>

### Use with Part(s)

Description	Part Number
Use With	Size 6B «44x27» Hoods and Housings

---

This document was generated on May 13, 2026