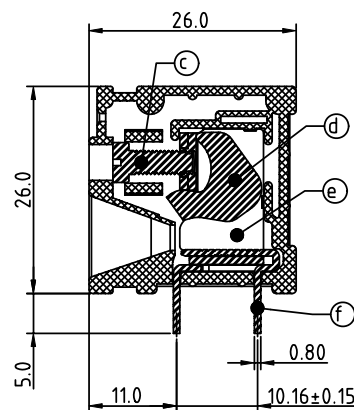
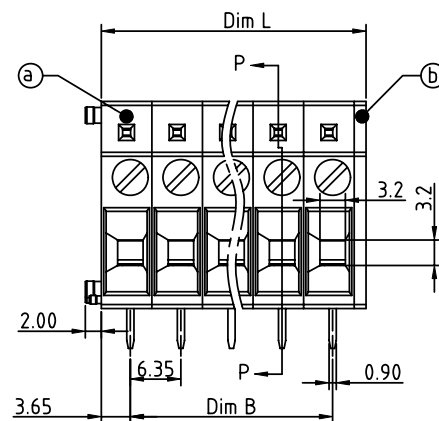
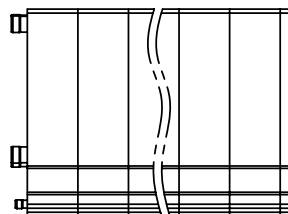
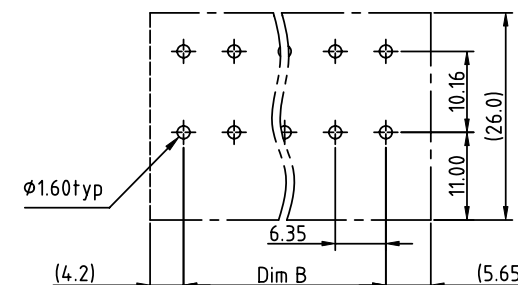


PRODUCT NUMBER	PITCH
KHxx05x100J0G	6.35 mm



SECTION P-P




RECOMMENDED P.C.B LAYOUT
TOP VIEW

Material

- Item**Ⓐ** Terminal body;Thermoplastic (UL94V-0)
- Item**Ⓑ** Terminal cover;Thermoplastic (UL94V-0)
- Item**Ⓒ** Terminal screw ;Steel Zinc plating “-” slot type
- Item**Ⓓ**Firm wire chunk:Steel Zinc plated
- Item**Ⓔ**Terminal body(metal housing):Steel, Zinc plating
- Item**Ⓕ**Solder pin:Copper, Tin plated

Electrical cULus

- Voltage rating: 300VAC
- Current rating: 30A
- Wire range:
- Solid wire(AWG): 10-24
- Stranded wire(AWG): 10-24
- Torque(Lb-In): 4.3
- Screw: M3
- Wire strip length: 15-16mm
- Withstanding Voltage: 1.6KV
- Operating temperature: -40°C to +115°C
- Soldering temperature: 260°C±5°C/5 Sec
- Safety Approval:  US

N = Number of poles

$$\text{Dim } A = N \times 6.35 + 1.5$$
$$\text{Dim B} = (N-1) \times 6.35$$

poles	Dim L	Dim B
1p	± 0.10	± 0.10
2-6p	± 0.20	± 0.20
7-12p	± 0.30	± 0.30
13-16p	± 0.40	± 0.40


PART NO.: KH xx 05 x 1 00J0 G

End stackable	
No. of poles	
01	1 pole
02	2 poles
...	...
16	16 poles

Body Color

0	Black (RAL9005)
2	Red (RAL3001/D)
3	Orange(RAL2011/P)
4	Yellow(RAL1018/A)
5	Green(RAL6018/T)
6	Blue (RAL5015/A)
8	Grey(RAL7035/D)
9	White(RAL1102)
C	Green(RAL6018/U)

RoHS compliant
(lead<4%)
In copper Alloy

mat'l. code				surface ASME Y14.5				tolerance ASME Y14.5				projection 				product family TERMINAL BLOCK							
ltr				ecn no				dr				date				tolerances unless otherwise specified				title			
																angles				TERMINAL BLOCK			
																lineal				MM			
																X.±0.5				scale			
																X.X±0.3							
																X*±1*				WIRE PROTECTOR,180D WIRE INLET			
																dr				sheet 1 of 1			
																ENGR				size			
																chr				A			
																appd				KHxx05x100J0G			
																SHI JUN				type			
																				CUSTOMER Drawing			
sheet index				revision sheet				A 1															