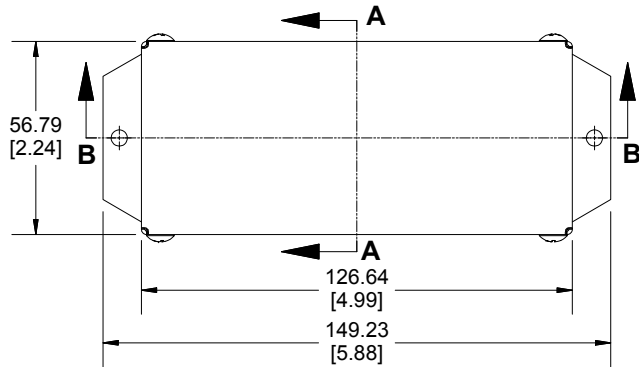
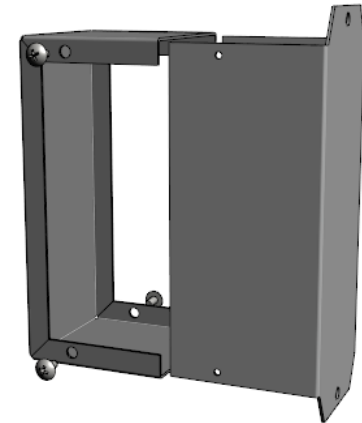
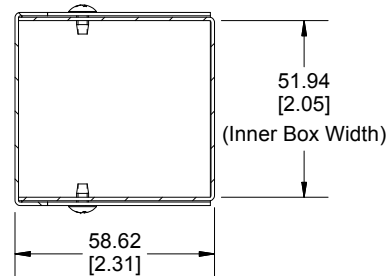


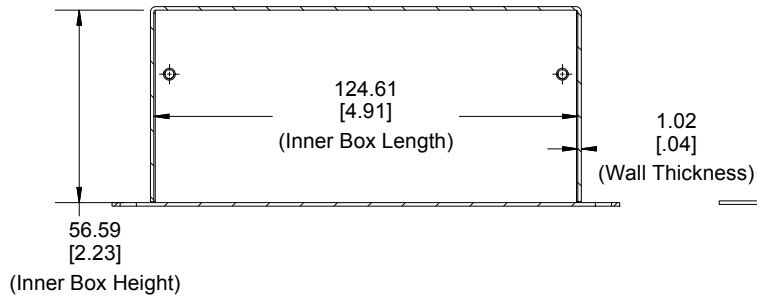
Top View of Assembly



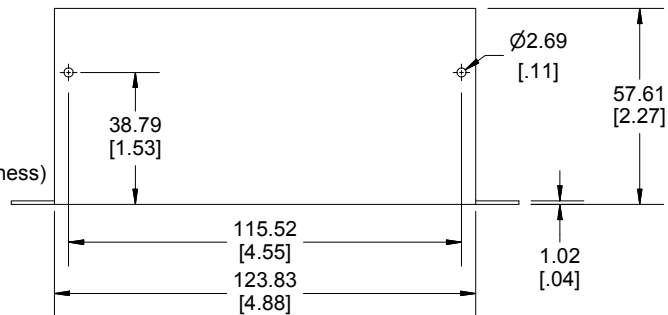
**SECTION A-A
End View of Assembly**



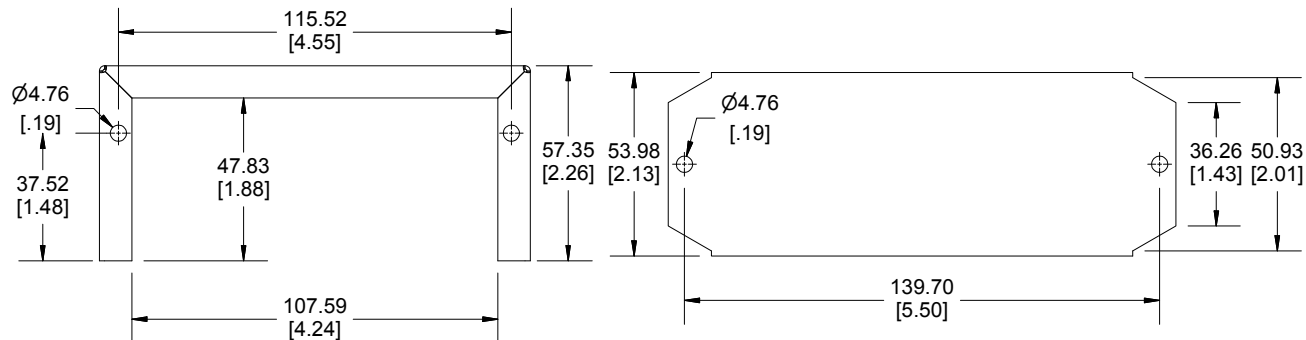
**SECTION B-B
Side View of Assembly**



Side View of Flanged Bottom



Side View of Cover



Enclosures can be Factory Modified (Milling, Drilling, Printing etc.)
Contact Factory mjm@hammondmfg.com for quotes
Solid models of this enclosure available in STEP or IGES.

NOTE

Purchased assembly includes flanged bottom, cover and 4 cover screws.
Bottom and cover are made from 0.04" Aluminum Panels.

PART NUMBERS

1411FBK Enclosure

Natural Finish Enclosure

1411FBKU

Black Enclosure

1411FBKBK

ACCESSORIES

Plated Cover Screws (Pkg 6)

1421J6

[6-32 x 1/4" Self-Tapping Screws]

Black Cover Screws (Pkg 6)

1421J6BK

[6-32 x 1/4" Self-Tapping Screws]

Dimensions:
mm
[inches]



**HAMMOND
MANUFACTURING™**

1411FBK

www.hammondmfg.com