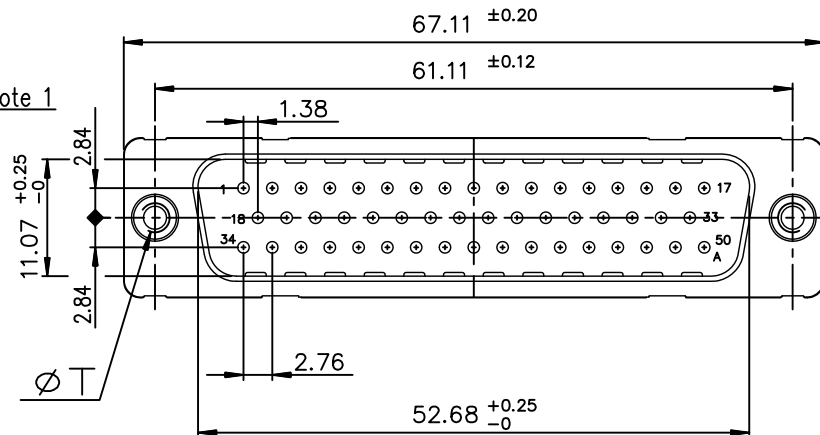
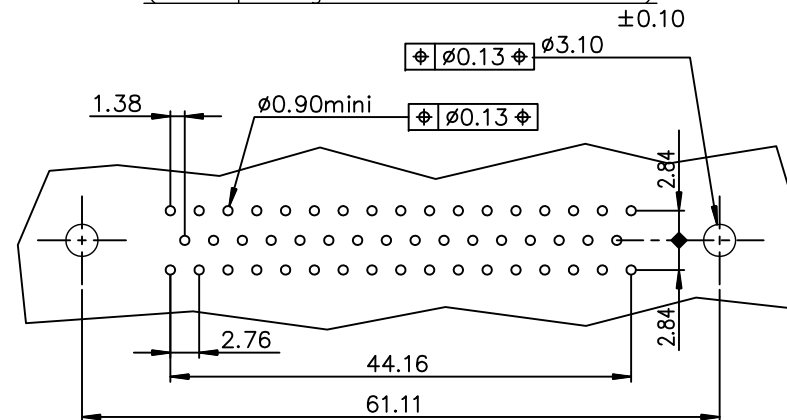


See note 1



PC card drilling dimensions
(after plating – thickness: 1.60 mm)



Plating: 4 --> flash AU

Plating: 6 --> 0.76µ AU

Part
number

D50P24A*P*00LF

X--> ØT = UNC 4-40
L--> ØT = M3

GENERAL CHARACTERISTICS AND ROHS INFORMATION:
SEE DRAWING C01-8646-0000

Notes:

1) The nut can protrude above the surface of insulator but maintaining the footprint dimension 6.0±0.15 mm.

mat'l. code				surface		tolerance		projection		product family										
—				ISO 1302 ✓		ISO 406 ISO 1101				D-SUB										
ltr	ecn no	dr	date	tolerances unless otherwise specified								title								
A	—	MPE	1997/10/29	angles		linear		0.X±0.1		—		MALE DELTA-D 50 EUROPE								
B	LS07-0281	MPE	2007/11/06					0.XX±0.1		—		STRAIGHT SOLDER WITH NUT								
C	ELX-I-15331	AB	2013/07/24	0.XX±2°				0.XXX±0.1		scale 2:1										
D	ELX-I-21256	AB	2015/07/14	dr	PEESSON		1997/10/27				dwg no				sheet 1 of 1				size	
—	—	—	—	enr	ALIAS.BABU		2013/07/24				C01-8646-0589				A3					
—	—	—	—	chr	MITHUN.PAUL		2013/07/24													
—	—	—	—	appd	BIJU.K.PAUL		2013/07/24				type				CUSTOMER Drawing					
sheet index		revision sheet		D	1	—	—	—	—	—	—	—	—	—	—	—	—	—	—	
						—	—	—	—	—	—	—	—	—	—	—	—	—	—	