



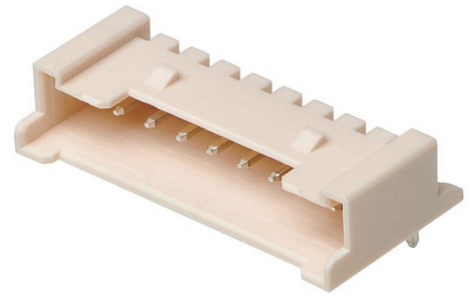
Part Number : [353630960](#)

Product Description : 2.00mm Pitch Sherlock Wire-to-Board Header, Right-Angle, with Positive Lock, 9 Circuits

Series Number : 35363

Status : Not Recommended For New Design

Product Category : PCB Headers and Receptacles



Documents and Resources

Drawings

[353630960_sd.pdf](#)

[353630960_stp.zip](#)


[Symbol and Footprint \(Multi-Format\)](#)

Specifications

[PS-35507-001-001.pdf](#)

Product Environment Compliance

Compliance

GADSL/IMDS	Compliant with Exemption 44
China RoHS	 per SJ/T 11365-2006
EU ELV	Not Relevant
Low-Halogen Status	Low-Halogen per IEC 61249-2-21
REACH SVHC	Not Contained per D(2024)7663-DC (21 Jan 2025)
EU RoHS	Compliant per EU 2015/863

Compliance Statements

- EU RoHS
- REACH SVHC
- Low-Halogen

Industry Documents

- IPC 1752A Class C
- IPC 1752A Class D

- Molex Product Compliance Declaration
- IEC-62474
- chemSHERPA (xml)

Substances of Interest

- PFAS

EU RoHS Certificate of Compliance

Additional Product Compliance Information

Part Details

General

Status	Not Recommended For New Design
Category	PCB Headers and Receptacles
Series	35363
Description	2.00mm Pitch Sherlock Wire-to-Board Header, Right-Angle, with Positive Lock, 9 Circuits
Application	Wire-to-Board
Component Type	PCB Header
Product Name	Sherlock
UPC	822348260492

Agency

CSA	LR19980
UL	E29179

Electrical

Current - Maximum per Contact	2.0A
Voltage - Maximum	125V

Physical

Breakaway	No
Circuits (Loaded)	9
Circuits (maximum)	9
Color - Resin	Natural
Durability (mating cycles max)	30

First Mate / Last Break	No
Glow-Wire Capable	No
Guide to Mating Part	No
Keying to Mating Part	No
Lock to Mating Part	Yes
Material - Plating Mating	Tin
Material - Plating Termination	Tin
Material - Resin	Nylon
Net Weight	0.600/g
Number of Rows	1
Orientation	Right Angle
Packaging Type	Bag
PCB Locator	No
PCB Retention	Yes
PCB Thickness - Recommended	1.60mm
PC Tail Length	3.20mm
Pitch - Mating Interface	2.00mm
Polarized to Mating Part	Yes
Polarized to PCB	No
Shrouded	Partially Shrouded
Stackable	No
Temperature Range - Operating	-40° to +105°C
Termination Interface Style	Through Hole

Mates With / Use With

Mates with Part(s)

Description	Part Number
Sherlock Receptacle Housings	<u>35507</u>

This document was generated on Jun 10, 2026