



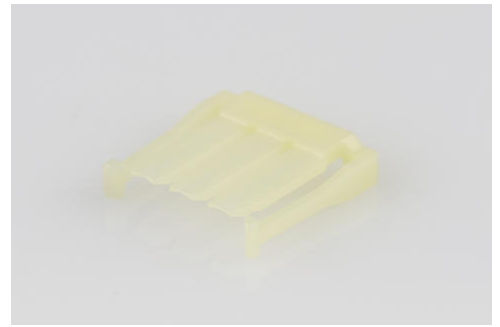
Part Number : [1053252003](#)

Product Description : Nano-Fit Terminal Position Assurance (TPA) Retainer, 2.50mm Pitch, 3 Circuits, Natural

Series Number : 105325

Status : Active

Product Category : Connector Accessories



Documents and Resources

Drawings

[1053252003_sd.pdf](#)

[PK-105325-100-000.pdf](#)

3D Models and Design Files

[STEP AP242](#)

[SOLIDWORKS](#)

[Creo](#)

Specifications


[AS-105300-100-001.pdf](#)

[PS-105300-100-001.pdf](#)

[1053000000-TS-000.pdf](#)

Product Environment Compliance

Compliance

GADSL/IMDS	Not Relevant
China RoHS	 per SJ/T 11365-2006
EU ELV	Not Relevant
Low-Halogen Status	Low-Halogen per IEC 61249-2-21
REACH SVHC	Not Contained per D(2025)7771-DC (04 Feb 2026)
EU RoHS	Compliant per EU 2015/863

[Compliance Statements](#)

- EU RoHS
- REACH SVHC
- Low-Halogen

Industry Documents

- IPC 1752A Class C
- IPC 1752A Class D
- Molex Product Compliance Declaration
- IEC-62474
- chemSHERPA (xml)

Substances of Interest

- PFAS

EU RoHS Certificate of Compliance

Additional Product Compliance Information

Part Details

General

Status	Active
Category	Connector Accessories
Series	105325
Description	Nano-Fit Terminal Position Assurance (TPA) Retainer, 2.50mm Pitch, 3 Circuits, Natural
Comments	Operating temperature is -40° to +105° for tin and -40° to +115° for gold
Component Type	Terminal Position Assurance (TPA)
Product Name	Nano-Fit
UPC	889056029131

Physical

Circuits (Loaded)	3
Circuits (maximum)	3
Color - Resin	Natural
Lock to Mating Part	Yes
Material - Resin	Nylon
Net Weight	0.077/g
Number of Rows	1

Packaging Type	Bag
Temperature Range - Operating	-40° to +125°C

Mates With / Use With

Use with Part(s)

Description	Part Number
Nano-Fit TPA Capable Single Row Receptacle Housings	<u>105307</u>
Nano-Fit TPA Capable Dual Row Receptacle Housings	<u>105308</u>
Nano-Fit TPA Capable Single Row Plug Housings	<u>200277</u>
Nano-Fit Dual Row TPA Capable Plug Housings	<u>201444</u>
Nano-Fit BMI TPA Capable Plug Housings	<u>224556</u>
Nano-Fit TPA Capable Single Row Receptacle Housings for UL 1569/1007 Wire	<u>226354</u>
Nano-Fit TPA Capable Dual Row Receptacle Housings for UL 1569/1007 Wire	<u>226362</u>

This document was generated on May 09, 2026