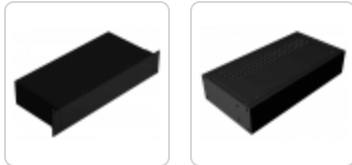
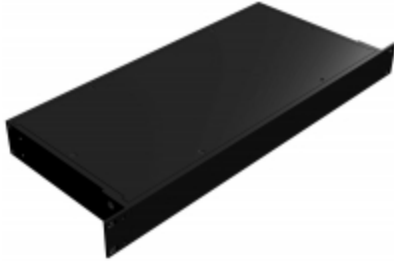


# Rack Mount Aluminum Instrument Enclosure *RM Series*

Extruded Aluminum, 19" Rack-Mount or Desktop Use

**NEW SIZES**



## Features

- Strong yet lightweight construction using all aluminum components.
- Suitable for desktop or rack mount applications.
- Knockdown design ships unassembled for easy handling and shipping protection.
- Strong construction using:
  - Extruded aluminum side panels 0.125" (3.2 mm) thick
  - Extruded aluminum front and rear panels 0.125" (3.2mm) thick
  - Flat aluminum top and bottom panels 0.064" (1.6 mm) thick
- Can be used with or without rack mounting brackets. One pair included with 19" mounting versions.
- Enclosure is finished in rugged textured black powder coat.
- Pull handles and adjustable rear bracket rack mount kit for deeper models are available separately.
- RoHS Compliant.
- Manufactured in North America.
- **NOTE:** Panels are not grounded to frame due to powder coat finish. Grounding method to be determined by customer.

## What's In The Box

Each assembly includes:

- 2x interchangeable front and rear panels
- 2x interchangeable top and bottom panels
- 2x interchangeable side panels
- 4x self-adhesive rubber feet
- Assembly hardware, including screws and speed nuts. Quantities are size-specific; see drawings for more details
- Full-width versions only - 1x pair of 19" rack mounting flanges and hardware

## Accessories

- Chassis Tilt Bail
- Rack Equipment Installation Tool
- Hardware for Rack Mounting Solutions

Part No.	Part No.	Overall Dimensions	Rack Units	Includes		Adjustable Depth Mounting Bracket Part No. (Sold in Pairs)
				19" Rack Mounting Ears	Accepts Pull Handle Part No.	
Solid Top/Bottom	Vented Top/Bottom	Height Width Depth				
RM1U0804SBK	RM1U0804VBK	1.75 8.30 4.25	1U	No	1427B2BK	
RM1U0808SBK	RM1U0808VBK	1.75 8.30 8.00	1U	No	1427B2BK	
RM1U1908SBK	RM1U1908VBK	1.75 16.60 8.00	1U	Yes	1427B2BK	

Part No. Solid	Part No. Vented	Overall Dimensions			Rack Units	Includes		Adjustable Depth Mounting Bracket Part No. (Sold in Pairs)
		Height	Width	Depth		19" Rack Mounting Ears	Accepts Pull Handle Part No.	
Top/Bottom	Top/Bottom							
RM1U1913SBK	RM1U1913VBK	1.75	16.60	13.00	1U	Yes	1427B2BK	
RM1U1918SBK	RM1U1918VBK	1.75	16.60	18.00	1U	Yes	1427B2BK	RM1U18BRKT
RM1U1922SBK	RM1U1922VBK	1.75	16.60	22.00	1U	Yes	1427B2BK	RM1U18BRKT
RM1U1928SBK	RM1U1928VBK	1.75	16.60	28.00	1U	Yes	1427B2BK	RM1U18BRKT
RM2U0804SBK	RM2U0804VBK	3.50	8.30	4.25	2U	No	1427E1BK	
RM2U0808SBK	RM2U0808VBK	3.50	8.30	8.00	2U	No	1427E1BK	
RM2U1908SBK	RM2U1908VBK	3.50	16.60	8.00	2U	Yes	1427E1BK	
RM2U1913SBK	RM2U1913VBK	3.50	16.60	13.00	2U	Yes	1427E1BK	
RM2U1918SBK	RM2U1918VBK	3.50	16.60	18.00	2U	Yes	1427E1BK	RM2U18BRKT
RM2U1922SBK	RM2U1922VBK	3.50	16.60	22.00	2U	Yes	1427E1BK	RM2U18BRKT
RM2U1928SBK	RM2U1928VBK	3.50	16.60	28.00	2U	Yes	1427E1BK	RM2U18BRKT
RM3U0804SBK	RM3U0804VBK	5.25	8.30	4.25	3U	No	1427P1BK	
RM3U0808SBK	RM3U0808VBK	5.25	8.30	8.00	3U	No	1427P1BK	
RM3U1908SBK	RM3U1908VBK	5.25	16.60	8.00	3U	Yes	1427P1BK	
RM3U1913SBK	RM3U1913VBK	5.25	16.60	13.00	3U	Yes	1427P1BK	
RM3U1918SBK	RM3U1918VBK	5.25	16.60	18.00	3U	Yes	1427P1BK	RM3U18BRKT
RM3U1922SBK	RM3U1922VBK	5.25	16.60	22.00	3U	Yes	1427P1BK	RM3U18BRKT
RM3U1928SBK	RM3U1928VBK	5.25	16.60	28.00	3U	Yes	1427P1BK	RM3U18BRKT
RM4U1908SBK	RM4U1908VBK	7.00	16.60	8.00	4U	Yes	1427P1BK	
RM4U1913SBK	RM4U1913VBK	7.00	16.60	13.00	4U	Yes	1427P1BK	
RM4U1918SBK	RM4U1918VBK	7.00	16.60	18.00	4U	Yes	1427P1BK	RM4U18BRKT
RM4U1922SBK	RM4U1922VBK	7.00	16.60	22.00	4U	Yes	1427P1BK	RM4U18BRKT
RM4U1928SBK	RM4U1928VBK	7.00	16.60	28.00	4U	Yes	1427P1BK	RM4U18BRKT
RM5U1913SBK	RM5U1913VBK	8.75	16.60	13.00	5U	Yes	1427P1BK	
RM5U1918SBK	RM5U1918VBK	8.75	16.60	18.00	5U	Yes	1427P1BK	RM5U18BRKT
RM5U1922SBK	RM5U1922VBK	8.75	16.60	22.00	5U	Yes	1427P1BK	RM5U18BRKT
RM5U1928SBK	RM5U1928VBK	8.75	16.60	28.00	5U	Yes	1427P1BK	RM5U18BRKT

## Replacement Hardware

Part No.	Description	Used For
RM632SC100BK	100 pack of 6-32 x 3/8" thread rolling (taptite) screws	Side panel assembly
RM440SN100BK	100 pack of 4-40 speed nuts	Top & bottom panel assembly
RM440MS100BK	100 pack of 4-40 machine screws	Top & bottom panel assembly
RM1032MS100BK	100 pack of 10-32 machine screws	Rack mounting bracket assembly

## Replacement Front (Pair) of Rack Ears

Part No.	Rack Units
RM1UMTGFL	1U
RM2UMTGFL	2U
RM3UMTGFL	3U
RM4UMTGFL	4U
RM5UMTGFL	5U

Includes enclosure mounting screws

## Adjustable-Depth Rear (Pair) of Rack Ears for 4-Post Mounting

Part No.	For Chassis Height	Max Depth Added to Chassis
RM1U18BRKT	1U	16.00
RM2U18BRKT	2U	16.00
RM3U18BRKT	3U	16.00
RM4U18BRKT	4U	16.00
RM5U18BRKT	5U	16.00

Compatible with full 16.60" width versions only.

### Replacement Top/Bottom Body Panel (Sold Individually)

Solid Part No.	Vented Part No.	Panel Dimensions	
		Width	Depth
RM0804BKSP	RM0804BKVP	8.30	4.25
RM0808BKSP	RM0808BKVP	8.30	8.00
RM1908BKSP	RM1908BKVP	16.60	8.00
RM1913BKSP	RM1913BKVP	16.60	13.00
RM1918BKSP	RM1918BKVP	16.60	18.00
RM1922BKSP	RM1922BKVP	16.60	22.00
RM1928BKSP	RM1928BKVP	16.60	28.00

### Replacement Side Panels (Sold Individually)

1U	2U	3U	4U	5U	Depth
RM1U04BKSP	RM2U04BKSP	RM3U04BKSP			4.00
RM1U08BKSP	RM2U08BKSP	RM3U08BKSP	RM4U08BKSP		8.00
RM1U13BKSP	RM2U13BKSP	RM3U13BKSP	RM4U13BKSP	RM5U13BKSP	13.00
RM1U18BKSP	RM2U18BKSP	RM3U18BKSP	RM4U18BKSP	RM5U18BKSP	18.00
RM1U22BKSP	RM2U22BKSP	RM3U22BKSP	RM4U22BKSP	RM5U22BKSP	22.00
RM1U28BKSP	RM2U28BKSP	RM3U28BKSP	RM4U28BKSP	RM5U28BKSP	28.00

### Replacement Front or Rear Panel (Sold Individually)

Part No.	Height	Width	Rack Units
RM1U08BKFP	1.75	8.30	1U
RM2U08BKFP	3.50	8.30	2U
RM3U08BKFP	5.25	8.30	3U
RM1U19BKFP	1.75	16.60	1U
RM2U19BKFP	3.50	16.60	2U
RM3U19BKFP	5.25	16.60	3U
RM4U19BKFP	7.00	16.60	4U
RM5U19BKFP	8.75	16.60	5U

Tags: **RMU, rackmount, rack-mount, brackets, 19", rack unit, instrument, it rack enclosures, Rack Mount Aluminum Chassis** *Data subject to change without notice.*

© 2026. Hammond Manufacturing Ltd. All rights reserved.