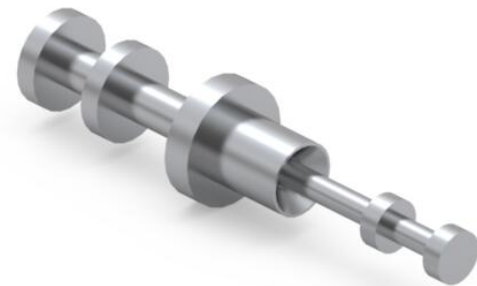
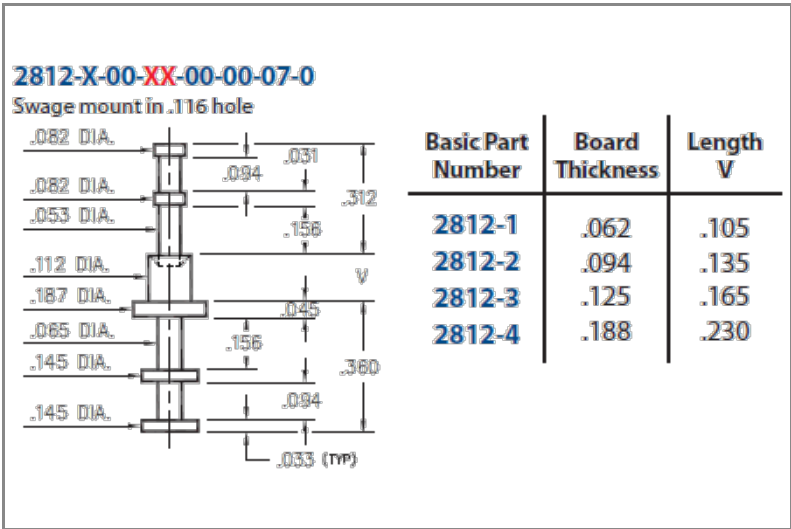




PRODUCT NUMBER: 2812-2-00-50-00-00-07-0

www.mill-max.com
DATA SHEET



2812-2-00-50-00-00-07-0 SPECIFICATIONS

| General Info | |
|----------------------------------|---------------------|
| Description ¹ : | Turret Terminal Pin |
| Mounting Feature: | Swage Mount |
| Mounting Hole: | .116" (2,946mm) |
| Packaging: | Packaged in Bulk |
| RoHS: | No |
| Product Lifecycle ² : | Active |
| Country Of Origin: | USA |

| Materials | |
|------------------------|-----------------------------|
| Shell | |
| Material | Brass Alloy |
| ³ : | |
| Shell | 300 - 500 μ" Electro-Solder |
| Plating ⁴ : | (60/40 Tin/Lead) |

| Technical Specs | |
|--|----------------------|
| Operating Temperature Range ⁵ : | - 55/+125° C |
| Maximum Current: | Application Specific |

NOTES:

1. Standard Tolerances:
Lengths +/- .005" (0,13)
Diameters: +/- .002" (0,051)
Angles: +/- 2°
2. Part is Active and in Production, No Scheduled Obsolescence
3. Brass Alloy 360 per ASTM B 16, or 385 per ASTM B455
4. ELECTRO-SOLDER (60/40) per ASTM B 579, SC2, Bright finish; NICKEL per ASTM B 689, Type 2 (Bright)
5. Per IEC 60512-11-(4,-9,-10,-12)

ADDITIONAL NOTES AND SPECIFICATIONS

In the interest of improved design, quality and performance , Mill-Max reserves the right to make changes in its specifications without prior notice. Specifications and tolerances are provided wherever possible. The tolerance on dimensions of critical to function features is typically held tighter than the stated standard tolerances, such as press-fits, holes and lengths affecting the coplanarity of SMT products. Due to the wide variety of interconnects Mill-Max offers, the specific tolerances vary from product to product. If you need information regarding the tolerance of a particular part, please contact Technical Services.

RELATED LINKS AND DOCUMENTS

Engineering Notebook: (<https://www.mill-max.com/engineering-notebooks/printed-circuit-board-terminal-pins/introduction-to-swage-assembly>)

Engineering Notebook: (<https://www.mill-max.com/engineering-notebooks/printed-circuit-board-terminal-pins>)

Environmental Compliance: (<https://www.mill-max.com/rohs>)