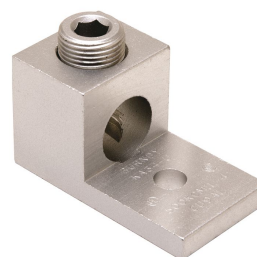


KA29U, AL Set Screw Terminal, Dual Rated, 1-Hole

By Burndy
 Catalog # [KA29U](#)

Aluminum Universal Terminal, 1 Hole, 6 AWG (Str)-250 kcmil, 5/16" Stud, 1 Screw, Al/Cu Rated, Tin Plated



Features

- Dual Rated Panelboard Lugs
- High strength extruded aluminum alloy
- Electro tin-plated for low contact resistance
- Rated to 35kV

Application

For Aluminum And Copper Conductors

Specifications

Buy American Compliant	Contact Manufacturer
EU RoHS Indicator	Yes
Buy America(n) Qualified	TAA Compliant (All status valid till December 2026)
Industry Standard(s)	UL 486A-486B
Standards - Industry Standards Met	UL 486A-486B
Standards - RoHS Compliance Status	EX
Certification - UL Listed Direct Burial	No
UL Listed	Yes
Certification - CSA Approved	Yes

Conductor

Conductor - Nominal Diameter	0.184, 0.184, 0.206, 0.232, 0.232, 0.260, 0.260, 0.292, 0.320, 0.328, 0.360, 0.368, 0.390, 0.414, 0.438, 0.464, 0.492, 0.522, 0.528, 0.574, 0.600
Conductor - AL Str Size	<ul style="list-style-type: none"> • 6 • 4 • 3 • 2 • 1 • 1/0 • 2/0 • 3/0 • 4/0 • 250
Conductor - AL Str Size Range	6-250
Conductor - Copper Str Size	<ul style="list-style-type: none"> • 6 • 5 • 4

- 3
- 2
- 1
- 1/0
- 2/0
- 3/0
- 4/0
- 250

Conductor Size	6 AWG-250 KCMIL
Number Of Conductors	1
Conductor Type	<ul style="list-style-type: none"> • AL C Str-Size • CU C Str-Size • CU C Solid-Size
Conductor - Copper Str Size Range	6-250

Configuration

Physical Attribute - Number of Screws	1
Physical Attribute - Number of Holes	1
Connector Type	Terminal

Dimensions

Dimension - Pad Width inch	1.02 in
Package Height	2.300 in
Dimension - Height mm	29 mm
Dimension - Height inch	1.14 in
Dimension - Height fraction	1.14 in
Package Weight	2.780 lb.
Package Length	10.100 in
Package Width	3.550 in
Dimension - L Length Overall mm	51 mm
Dimension - Hole Size mm	8 mm
Dimension - Hole Size inch	0.33 in
Dimension - Stud Size inch	5/16
Dimension - Bolt Hole Size inch	0.31 in
Dimension - Bolt Size fraction	5/16
Dimension - Width mm	25 mm
Dimension - Width inch	1.00 in
Dimension - D inch	0.94 in
Dimension - N inch	0.47 in
Dimension - Length Overall inch	2.00 in

Force Related

Installation Torque 275 LBS/in
Recommended in-lb

General

Material - Hardware Aluminum
Physical Attribute - Screw Type Allen
Plated Y
Sub Brand UNIVERSAL TERM
UPC 781810370155
Type Bolted Lugs & Terminals
Material Aluminum
Plating Type Tin

UPC 14 Digit GTIN

00781810370155

Logistics

Minimum Pack Quantity 25
Pallet Quantity 8000
Carton Quantity 400

Operational

Temperature Rating 194

Product Assets

[Catalog \[English\]](#)



A Hubbell brand

© 2026 Hubbell Incorporated. All rights reserved
BRDY-KA29U-SPEC-EN | REV 5/2026