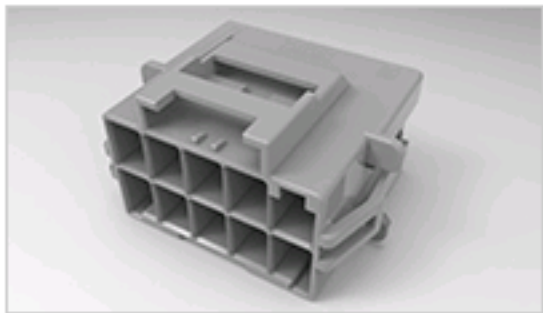




7-1971775-5 Product Details

Share Print Email



Power Triple Lock Connector System

2x5 cap housing panel mount Key C lgr

7-1971775-5

TE Internal Number: 7-1971775-5

Active

View 3D PDF

Product Highlights [View All](#)

- Power Triple Lock Product Line
- Wire-to-Panel
- Applies To Panel
- Connector
- Connector Assembly

Pricing & Availability

Request Sample

Add to My Part List

Buy Product through Distributor

Feedback

Documents

Features

Compliance

Please Note:

Use the Product Drawing for all design activity

Product Type Features

Product Line	Power Triple Lock
Product Type	Connector
Connector Type	Connector Assembly

Mechanical Attachment

Mating Retention Type	Latch(ing)
Panel Mount Retention	With
Mount	Panel
Panel Mount Retention Type	Mounting Ear(s)

Electrical Characteristics

Operating Voltage (VAC)	600
Operating Voltage (VDC)	600

Dimensions

Panel Thickness (mm [in])	1.00 – 2.00 [0.039 – 0.079]
---------------------------	-----------------------------

Body Features

Mating Retention	With
Row-to-Row Spacing (mm [in])	8.10 [0.319]

Contact Features

Contact Layout	Double Row
----------------	------------

Housing Features

Connector Style	Receptacle
Centerline (mm [in])	6.00 [0.236]
Housing Material	Nylon - GF
Housing Color	Light Gray

Configuration Features

Number of Positions	10
---------------------	----

Industry Standards

RoHS/ELV Compliance	RoHS compliant, ELV compliant
Lead Free Solder Processes	Not reviewed for lead free solder process
RoHS/ELV Compliance History	Always was RoHS compliant
UL Flammability Rating	UL 94V-0

Identification Marking

Keying	C
--------	---

Environmental

Operating Temperature (°C [°F])	-55 – +150 [-67 – +302]
Halogen Free	Yes

Conditions for Usage

Applies To	Panel
Glow Wire Rating	High Temperature Part - Not Glow Wire

Operation/Application

Application Use	Wire-to-Panel
Contact Transmits (Typical Application)	Power

Other

Brand	TE Connectivity
-------	-----------------

Related Products

Not quite the product you're looking for?

[Find Similar Products](#)

[View Part in Product Feature Selector](#)

[Check for Tooling](#)

Corporate Information

- About TE
- Investors
- News Room
- Supplier Portal
- Careers
- Terms & Conditions
- Privacy Policy
- Global Accessibility Statement

Quick Links

- Distributor Inventory
- Product Cross Reference
- Documents & Drawings
- Product Compliance Support Center
- Site Map

Customer Support

- Email or Chat With Us
- Find a Phone Number
- Knowledge Base
- Manage Your Account

Keep Me Informed

