



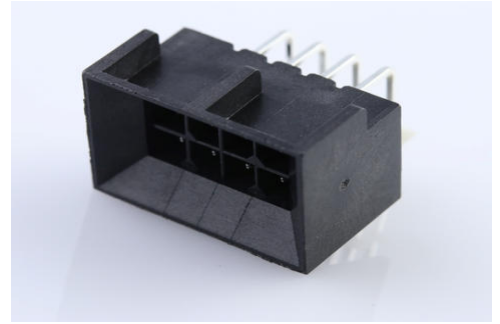
**Part Number :** [444280804](#)

**Product Description :** Micro-Fit BMI Header, Surface Mount Compatible, Dual Row, Right-Angle, without Snap-in Plastic Peg PCB Lock, 8 Circuits, 5.08µm Matte Tin (Sn) Plating

**Series Number :** 44428

**Status :** Active

**Product Category :** PCB Headers and Receptacles



---

## Documents and Resources

### Drawings

[444280804 sd.pdf](#)

[PK-44428-001-001.pdf](#)

### 3D Models and Design Files

[STEP AP242](#)

[SOLIDWORKS](#)

[Creo](#)

[Symbol and Footprint \(Multi-Format\)](#)

[SYM-44428-0804 6-001.zip](#)

### Specifications

[444280001-AS-000.pdf](#)

[PS-44300-001-001.pdf](#)

[443000002-TS-000.pdf](#)


[444280001-TS-000.pdf](#)

[447640002-TS-000.pdf](#)

---

## Product Environment Compliance

### Compliance

|            |   |
|------------|---|
| GADSL/IMDS | Compliant with Exemption 33; 44   |
| China RoHS |  per SJ/T 11365-2006 |
| EU ELV     | Not Relevant  |

|                    |  |
|--------------------|--|
| Low-Halogen Status | Not Low-Halogen per IEC 61249-2-21             |
| REACH SVHC         | Not Contained per D(2025)7771-DC (04 Feb 2026) |
| EU RoHS            | Compliant per EU 2015/863                      |

### Compliance Statements

- EU RoHS
- REACH SVHC
- Low-Halogen

### Industry Documents

- IPC 1752A Class C
- IPC 1752A Class D
- Molex Product Compliance Declaration
- IEC-62474
- chemSHERPA (xml)

### Substances of Interest

- PFAS

### EU RoHS Certificate of Compliance

### Additional Product Compliance Information

## Part Details

### General

|                |  |
|----------------|--|
| Status         | Active   |
| Category       | PCB Headers and Receptacles  |
| Series         | 44428  |
| Description    | Micro-Fit BMI Header, Surface Mount Compatible, Dual Row, Right-Angle, without Snap-in Plastic Peg PCB Lock, 8 Circuits, 5.08µm Matte Tin (Sn) Plating |
| Application    | Board-to-Board, Power, Wire-to-Board   |
| Comments       | High Temperature, Square Pin, Solder Type, Polarized to Mating Part  |
| Component Type | PCB Header   |
| Product Name   | Micro-Fit BMI  |
| UPC            | 800756097596   |

## Agency

|     |         |
|-----|---------|
| CSA | LR19980 |
| UL  | E29179  |

## Electrical

|                               |      |
|-------------------------------|------|
| Current - Maximum per Contact | 8.5A |
| Voltage - Maximum             | 600V |

## Physical

|                                |             |
|--------------------------------|-------------|
| Breakaway                      | No          |
| Circuits (Loaded)              | 8           |
| Circuits (maximum)             | 8           |
| Color - Resin                  | Black       |
| Durability (mating cycles max) | 30          |
| First Mate / Last Break        | No          |
| Glow-Wire Capable              | No          |
| Guide to Mating Part           | No          |
| Keying to Mating Part          | No          |
| Lock to Mating Part            | Yes         |
| Material - Metal               | Brass       |
| Material - Plating Mating      | Tin         |
| Material - Plating Termination | Tin         |
| Material - Resin               | Nylon       |
| Net Weight                     | 2.069/g     |
| Number of Rows                 | 2           |
| Orientation                    | Right Angle |
| Packaging Type                 | Tray        |
| PCB Locator                    | Yes         |
| PCB Retention                  | No          |
| PCB Thickness - Recommended    | 1.60mm      |
| PC Tail Length                 | 3.50mm      |
| Pitch - Mating Interface       | 3.00mm      |
| Plating min - Mating           | 5.080µm     |
| Plating min - Termination      | 5.080µm     |
| Polarized to PCB               | Yes         |

|                               |                |
|-------------------------------|----------------|
| Shrouded                      | Shrouded       |
| Stackable                     | No             |
| Temperature Range - Operating | -40° to +105°C |
| Termination Interface Style   | Through Hole   |

### Solder Process Data

|                              |      |
|------------------------------|------|
| Max-Duration                 | 5    |
| Lead-Free Process Capability | WAVE |
| Max-Cycle                    | 1    |
| Max-Temp                     | 260  |

---

### Mates With / Use With

#### Mates with Part(s)

| Description  | Part Number  |
|--|--------------|
| Micro-Fit BMI Dual Row Receptacle Housings         | <u>44133</u> |
| Micro-Fit BMI Right-Angle Dual Row PCB Receptacles | <u>44764</u> |
| Micro-Fit BMI Vertical Dual Row PCB Receptacles    | <u>44769</u> |

---

This document was generated on Apr 28, 2026