

Part Number : [50160281](#)

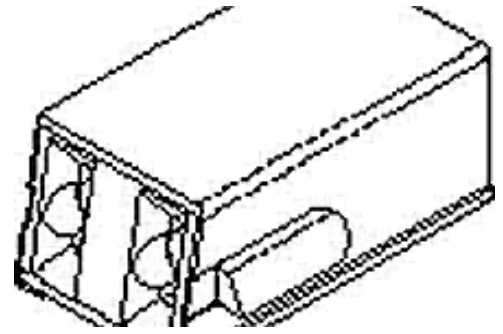
Product Description : 15.88mm Pitch Phenolic Range Receptacle Housing, Black

Series Number : 2481

Status : Active

Product Category : Connector Housings

Engineering Part Number : 2481



Documents and Resources

Drawings

[050160281_sd.pdf](#)

[PK-2481-0001-001.pdf](#)

3D Models and Design Files


[STEP AP242](#)

[SOLIDWORKS](#)

[Creo](#)

Product Environment Compliance

Compliance

| | |
|--------------------|---|
| GADSL/IMDS | Not Relevant |
| China RoHS |  per SJ/T 11365-2006 |
| EU ELV | Not Relevant |
| Low-Halogen Status | Low-Halogen per IEC 61249-2-21 |
| REACH SVHC | Not Contained per D(2025)7771-DC (04 Feb 2026) |
| EU RoHS | Compliant per EU 2015/863 |

Compliance Statements

- EU RoHS
- REACH SVHC
- Low-Halogen

Industry Documents

- IPC 1752A Class C

- IPC 1752A Class D
- Molex Product Compliance Declaration
- IEC-62474
- chemSHERPA (xml)

Substances of Interest

- PFAS

EU RoHS Certificate of Compliance

Additional Product Compliance Information

Part Details

General

| | |
|--------------|--|
| Status | Active |
| Category | Connector Housings |
| Series | 2481 |
| Description | 15.88mm Pitch Phenolic Range Receptacle Housing, Black |
| Application | Signal, Wire-to-Board |
| Product Name | Range Receptacle |
| UPC | 800753874992 |

Agency

| | |
|-----|---------|
| CSA | LR19980 |
|-----|---------|

Physical

| | |
|-------------------------------|--------------|
| Circuits (maximum) | 2 |
| Color - Resin | Black |
| Flammability | 94V-0 |
| Gender | Receptacle |
| Glow-Wire Capable | No |
| Net Weight | 20.500/g |
| Number of Rows | 1 |
| Packaging Type | Bag |
| Panel Mount | No |
| Pitch - Mating Interface | 15.88mm |
| Stackable | No |
| Temperature Range - Operating | 0° to +150°C |

Mates With / Use With

Mates with Part(s)

| Description | Part Number |
|---------------------------------|-------------|
| Range Receptacle Mounting Clips | <u>2589</u> |

This document was generated on Apr 21, 2026