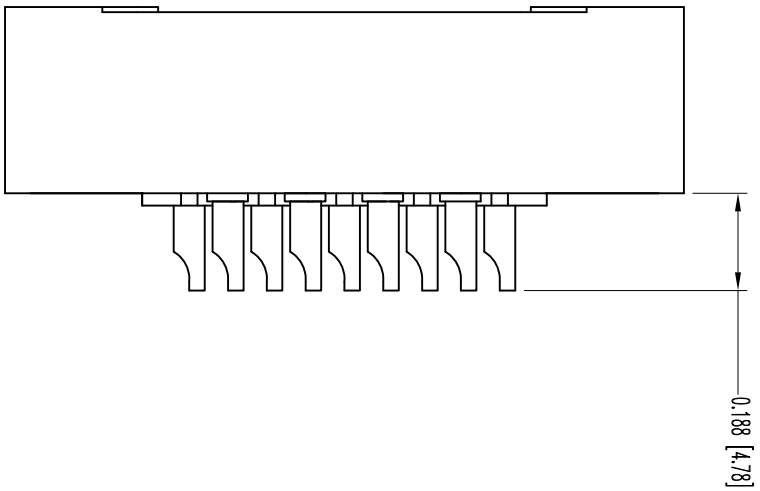
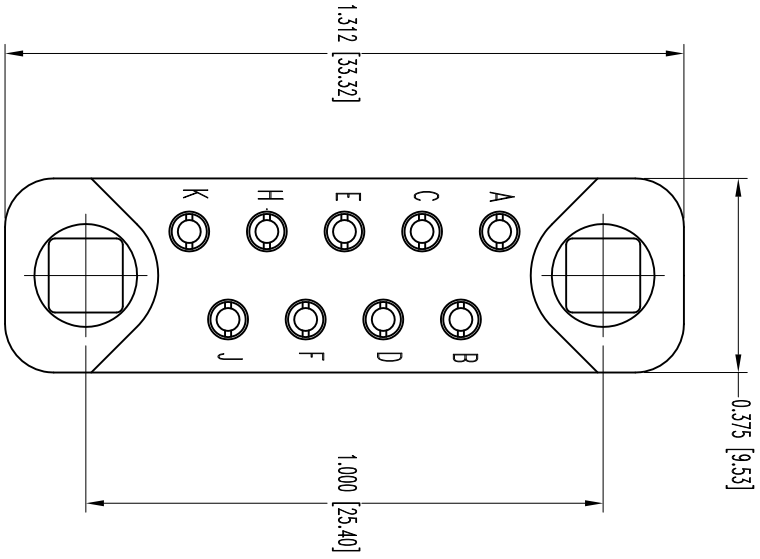



THIS DRAWING CONTAINS INFORMATION PROPRIETARY TO POSITRONIC IND. INC. ANY REPRODUCTION, DISCLOSURE OR USE OF THIS DRAWING IS EXPRESSLY AND EXCLUSIVELY FOR THE USE OF POSITRONIC INC. MAY OTHERWISE AGREE IN WRITING.



DATE	REV	REVISION RECORD	APP	DR	CK
3-23-11	NC	ECO 33804	COLF	BS	COLF

SK12263

		POSITRONIC INDUSTRIES INC.	
		SPRINGFIELD, MISSOURI 65801	
DECIMAL TOL. ± 0.015 [0.38]	TITLE GM9FSC000000	SCALE N.T.S.	DRAWN BY B SHELLYDY
ANGULAR TOL. $\pm \frac{5}{8}$	DATE 3-23-11	DRAWING NUMBER SK12263	APPROVED BY COLE

NOTES:

1. MATERIALS AND FINISHES:
 INSULATOR: GLASS FILLED DAP PER ASTM-D5948, SD6-F, COLOR: GREY.
 CONTACTS: PRECISION MACHINED COPPER ALLOY, GOLD FLASH OVER NICKEL PLATE.
2. DETAILED PRODUCT, MECHANICAL, AND ELECTRICAL INFORMATION IS AVAILABLE IN THE LATEST STANDARD DENSITY RECTANGULAR PRODUCT PUBLICATION. VISIT CONNECTPOSITRONIC.COM/PRODUCTS/53/STANDARDENSITYRECTANGULAR OR CONNECTPOSITRONIC.COM.
3. DIMENSIONS ARE IN INCHES [MILLIMETERS].