

Color: ■ dark gray

Matrix patchboards, 726 Series, operating tool

Seamless electrical installations are guaranteed with these matrix patchboards (item number 726-241). Ensure that the strip lengths are between 8 mm and 10 mm when connecting conductors to these matrix patchboards. This product features conductor terminals and utilizes CAGE CLAMP®. Our proven universal connection known as CAGE CLAMP® is the industry standard when it comes to connection technology and electrical interconnections. The item's dimensions are 44 x 132 x 36.5 mm (width x height x depth). These matrix patchboards are suitable for conductor cross sections ranging from 0.08 mm² to 1.5 mm² on one side and for conductor cross sections ranging from 0.08 mm² to 2.5 mm² on the other side. The dark gray housing is made of polyamide (PA66) for insulation.

Electrical data

Ratings per IEC/EN	
Nominal voltage (III/3)	500 V
Rated impulse withstand voltage (III / 3)	6 kV
Rated current	10 A
Legend (ratings)	(III / 3) Δ Overvoltage category III / Pollution degree 3

Connection data

Connection 1		Connection 2	
Connection type 1	Page 1	Connection type	Side 2
Connection technology	CAGE CLAMP®	Number of connection points	2
Number of connection points	3	Solid conductor	0.08 ... 2.5 mm² / 28 ... 14 AWG
Actuation type	Operating tool	Fine-stranded conductor	0.08 ... 2.5 mm² / 28 ... 14 AWG
Connectable conductor materials	Copper		
Solid conductor	0.08 ... 1.5 mm² / 28 ... 16 AWG		
Fine-stranded conductor	0.08 ... 1.5 mm² / 28 ... 16 AWG		
Strip length	8 ... 10 mm / 0.31 ... 0.39 inches		
Pole number	32		
Wiring direction	Front-entry wiring		





Physical data		
Width		44 mm / 1.732 inches
Height		132 mm / 5.197 inches
Depth		36.5 mm / 1.437 inches

Mechanical data		
Marking		1 ... 32

Material data		
Note (material data)		Information on material specifications can be found here
Color		dark gray
Module color		blue
Material group		I
Insulation material (main housing)		Polyamide (PA66)
Flammability class per UL94		V0
Fire load		4.497 MJ
Weight		186.7 g

Commercial data		
eCl@ss 10.0		27-24-26-08
eCl@ss 9.0		27-24-26-08
ETIM 9.0		EC001604
ETIM 8.0		EC001604
PU (SPU)		20 (1) pcs
Packaging type		Box
Country of origin		DE
GTIN		4066966347401
Customs tariff number		85369010000

Environmental Product Compliance		
RoHS Compliance Status		Compliant, No Exemption

Approvals / Certificates																	
General approvals		Declarations of conformity and manufacturer's declarations															
<div><div></div><table><tr><th>Approval</th><th>Standard</th><th>Certificate Name</th></tr><tr><td>CCA DEKRA Certification B.V.</td><td>EN 60998</td><td>NTR NL-7986</td></tr><tr><td>CSA CSA Group</td><td>C22.2 No. 158</td><td>1101143</td></tr><tr><td>KEMA/KEUR DEKRA Certification B.V.</td><td>EN 60998</td><td>71-127356</td></tr><tr><td>UL UL International Germany GmbH</td><td>UL 1059</td><td>E45172</td></tr></table></div>			Approval	Standard	Certificate Name	CCA DEKRA Certification B.V.	EN 60998	NTR NL-7986	CSA CSA Group	C22.2 No. 158	1101143	KEMA/KEUR DEKRA Certification B.V.	EN 60998	71-127356	UL UL International Germany GmbH	UL 1059	E45172
Approval	Standard	Certificate Name															
CCA DEKRA Certification B.V.	EN 60998	NTR NL-7986															
CSA CSA Group	C22.2 No. 158	1101143															
KEMA/KEUR DEKRA Certification B.V.	EN 60998	71-127356															
UL UL International Germany GmbH	UL 1059	E45172															
<table><tr><th>Approval</th><th>Standard</th><th>Certificate Name</th></tr><tr><td>EU-Declaration of Confor- mity WAGO GmbH & Co. KG</td><td>-</td><td>-</td></tr><tr><td>UK-Declaration of Confor- mity WAGO GmbH & Co. KG</td><td>-</td><td>-</td></tr></table>			Approval	Standard	Certificate Name	EU-Declaration of Confor- mity WAGO GmbH & Co. KG	-	-	UK-Declaration of Confor- mity WAGO GmbH & Co. KG	-	-						
Approval	Standard	Certificate Name															
EU-Declaration of Confor- mity WAGO GmbH & Co. KG	-	-															
UK-Declaration of Confor- mity WAGO GmbH & Co. KG	-	-															



Downloads

Environmental Product Compliance

Compliance Search

Environmental Product Compliance 726-241

Download icon

Documentation

Additional Information

Technical Section

pdf

2246.92 KB

Download icon

Bid Text

726-241

19.02.2019

xml

3.42 KB

Download icon

726-241

21.02.2019

docx

14.61 KB

Download icon

CAD/CAE-Data

CAD data

2D/3D Models 726-241

Download icon

CAE data

EPLAN Data Portal 726-241

Download icon

WSCAD Universe 726-241


Download icon

1 Compatible Products


1.1 Optional Accessories

1.1.1 Connector

1.1.1.1 Common potential terminal block



Item No.: 726-904
Additional module for matrix patchboards; for snap-on fixing to mounting adapter; insulated; with CAGE CLAMP®; 4,00 mm²; gray



Item No.: 726-903
Additional module for matrix patchboards; for snap-on fixing to mounting adapter; with contact to mounting frame; with CAGE CLAMP®; 4,00 mm²; white

1.1.2 Ferrule

1.1.2.1 Ferrule



Item No.: 216-202
Ferrule; Sleeve for 0.75 mm² / 18 AWG; insulated; electro-tin plated; gray



Item No.: 216-204
Ferrule; Sleeve for 1.5 mm² / AWG 16; insulated; electro-tin plated; black



Item No.: 216-104
Ferrule; Sleeve for 1.5 mm² / AWG 16; un-insulated; electro-tin plated; silver-colored



1.1.3 Insulation stop

1.1.3.1 Insulation stop



Item No.: 726-901
Insulation stop; 0.08 - 0.2 mm² "s" (0.14 mm² "f-st"); 4 x 3 pieces/strip; white



Item No.: 726-907
Insulation stop; 0.25 - 0.5 mm² "s+f-st"; 4 x 3 pieces/strip; dark gray



Item No.: 726-906
Insulation stop; 0.25 mm² "s"; 0.14 - 0.25 mm² "f-st"; 4 x 3 pieces/strip; light gray

1.1.4 Jumper

1.1.4.1 Jumper



Item No.: 709-107
Wire commoning chain; 0.5 mm²; insulated; gray

1.1.5 Marking

1.1.5.1 Marker



Item No.: 793-5501/000-006
WMB marking card; as card; for terminal block width 5 - 17.5 mm; stretchable 5 - 5.2 mm; plain; snap-on type; blue



Item No.: 793-5501/000-014
WMB marking card; as card; for terminal block width 5 - 17.5 mm; stretchable 5 - 5.2 mm; plain; snap-on type; brown



Item No.: 793-5501/000-007
WMB marking card; as card; for terminal block width 5 - 17.5 mm; stretchable 5 - 5.2 mm; plain; snap-on type; gray



Item No.: 793-5501/000-023
WMB marking card; as card; for terminal block width 5 - 17.5 mm; stretchable 5 - 5.2 mm; plain; snap-on type; green



Item No.: 793-5501/000-017
WMB marking card; as card; for terminal block width 5 - 17.5 mm; stretchable 5 - 5.2 mm; plain; snap-on type; light green



Item No.: 793-5501/000-012
WMB marking card; as card; for terminal block width 5 - 17.5 mm; stretchable 5 - 5.2 mm; plain; snap-on type; orange



Item No.: 793-5501/000-005
WMB marking card; as card; for terminal block width 5 - 17.5 mm; stretchable 5 - 5.2 mm; plain; snap-on type; red



Item No.: 793-5501/000-024
WMB marking card; as card; for terminal block width 5 - 17.5 mm; stretchable 5 - 5.2 mm; plain; snap-on type; violet



Item No.: 793-5501
WMB marking card; as card; for terminal block width 5 - 17.5 mm; stretchable 5 - 5.2 mm; plain; snap-on type; white



Item No.: 793-5501/000-002
WMB marking card; as card; for terminal block width 5 - 17.5 mm; stretchable 5 - 5.2 mm; plain; snap-on type; yellow



Item No.: 793-5502
WMB marking card; as card; MARKED; 1 ... 10 (10x); stretchable 5 - 5.2 mm; Horizontal marking; snap-on type; white



Item No.: 793-5566
WMB marking card; as card; MARKED; 1 ... 50 (2x); stretchable 5 - 5.2 mm; Horizontal marking; snap-on type; white



Item No.: 793-5500/793-035
WMB marking card; as card; MARKED; X (100x); stretchable 5 - 5.2 mm; Horizontal marking; snap-on type; white



Item No.: 2009-115
WMB-Inline; for Smart Printer; 1500 pieces on roll; stretchable 5 - 5.2 mm; plain; snap-on type; white

1.1.5.3 Marking strip



Item No.: 2009-110
Marking strips; for Smart Printer; on reel; not stretchable; plain; snap-on type; white

1.1.6 Tool

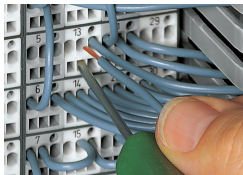
1.1.6.1 Operating tool



Item No.: 210-719
Operating tool; Blade: 2.5 x 0.4 mm; with a partially insulated shaft

Installation Notes

Conductor termination



CAGE CLAMP® connection
Inserting a conductor via 210-719 Operating Tool (2.5 x 0.4 mm blade).



CAGE CLAMP® connection
Terminating ferruled conductors via operating tool.

	Max. conductor cross section (mm²)AWG without ferrule	Max. conductor cross section (mm²)AWG with ferrule	
		insulated Item No./Color	uninsulated Item No.
Side 2	1.5	0.75 216-202/ gray	1 216-103
Side 1	1.5	0.75 216-202/ gray	1 216-103
Side 2	2.5	1.5 216-204/ black	1.5 216-104
Side 1	1.5	0.75 216-202/ gray	1 216-103

Ferrules

Conductor termination

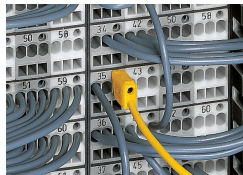


Inserting an insulation stop into conductor entry holes of matrix patchboards.



Insulation stop is in place.

Testing



Testing with a 2.3 mm Ø test plug (210-137).



Snapping on an additional module with contact to mounting frame.

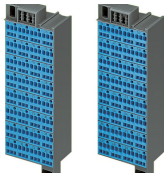


Assembling a matrix patchboard with additional module – direct connection to the mounting frame.



Installation example:
Matrix patchboards in a frame

Ex application

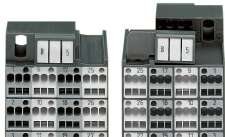


Blue matrix patchboards are suitable for
Ex i applications.

Marking



Factory-marked modules (Side 1: 1, 2, 3, 4
...)



Individual group marking via WMB Multi
Marking System