

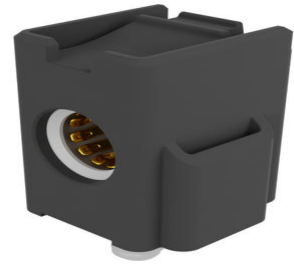
Part Number : [2207171001](#)

Product Description : HyperQube 6.00mm, Screw Mount, Right-Angle PCB Receptacle, Black, Tray

Series Number : 220717

Status : Active

Product Category : PCB Headers and Receptacles



Documents and Resources

Drawings

[2207171001_sd.pdf](#)

[2207171001-PK-000.pdf](#)

[STEP AP242](#)

[SOLIDWORKS](#)

[Creo](#)

[Symbol and Footprint \(Multi-Format\)](#)


Specifications

[2207170001-AS-000.pdf](#)

[2207170001-PS-000.pdf](#)

Product Environment Compliance

Compliance

GADSL/IMDS	Not Relevant
China RoHS	 per SJ/T 11365-2006
EU ELV	Not Relevant
Low-Halogen Status	Low-Halogen per IEC 61249-2-21
REACH SVHC	Not Contained per D(2025)7771-DC (04 Feb 2026)
EU RoHS	Compliant per EU 2015/863

[Compliance Statements](#)

- EU RoHS
- REACH SVHC

- Low-Halogen

Industry Documents

- IPC 1752A Class C
- IPC 1752A Class D
- Molex Product Compliance Declaration
- IEC-62474
- chemSHERPA (xml)

Substances of Interest

- PFAS

EU RoHS Certificate of Compliance

Additional Product Compliance Information

Part Details

General

Status	Active
Category	PCB Headers and Receptacles
Series	220717
Description	HyperQube 6.00mm, Screw Mount, Right-Angle PCB Receptacle, Black, Tray
Application	Power, Wire-to-Board, Wire-to-Busbar
Component Type	PCB Receptacle
Product Name	HyperQube
UPC	196823259364

Agency

CSA	LR19980
UL	E29179

Electrical

Current - Maximum per Contact	120.0A
Voltage - Maximum	1000V

Physical

Breakaway	No
Circuits (Loaded)	1

Circuits (maximum)	1
Color - Resin	Black
Diameter	6.00mm
Durability (mating cycles max)	200
First Mate / Last Break	No
Flammability	94V-0
Glow-Wire Capable	No
Keying to Mating Part	No
Lock to Mating Part	Yes
Material - Metal	High Performance Copper Alloy
Material - Plating Mating	Gold
Material - Plating Termination	Silver
Material - Resin	Polybutylene Terephthalate (PBT)
Net Weight	5.706/g
Number of Rows	1
Orientation	Right Angle
Packaging Type	Tray
PCB Locator	Yes
PCB Retention	Yes
PCB Thickness - Recommended	1.50mm-2.00mm
Pitch - Mating Interface	N/A
Polarized to Mating Part	No
Polarized to PCB	Yes
Temperature Range - Operating	-40° to +125°C
Termination Interface Style	Screw Mount

Mates With / Use With

Mates with Part(s)

Description	Part Number
HyperQube 6.00mm, Plug Housing, Black, Bag	<u>2207181001</u>

This document was generated on May 23, 2026