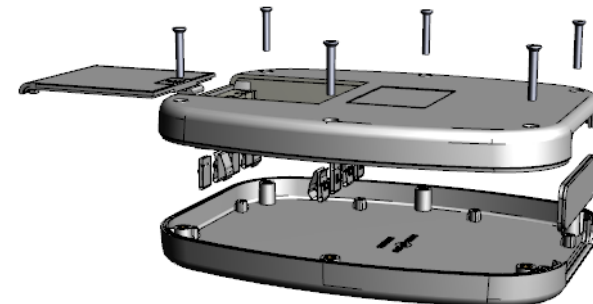
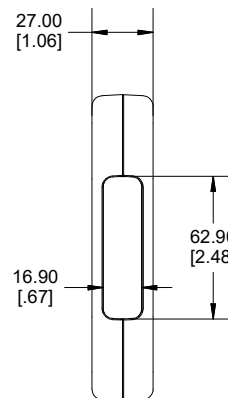
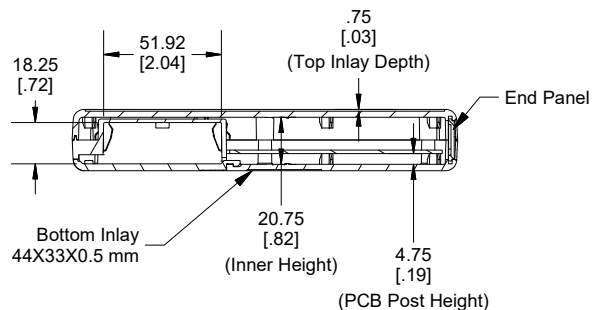


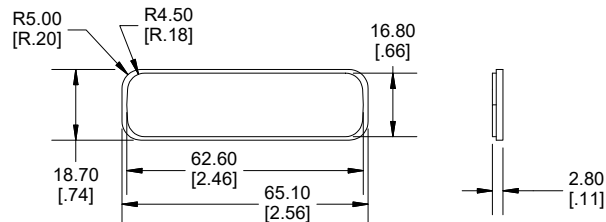
End View of Assembly



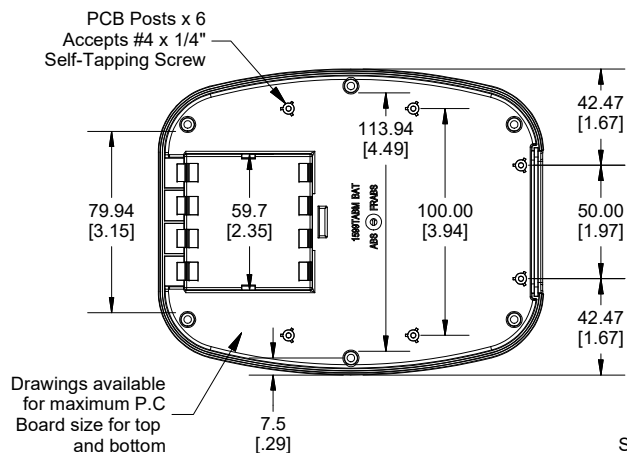
**SECTION A-A
(Side View of Assembly)**



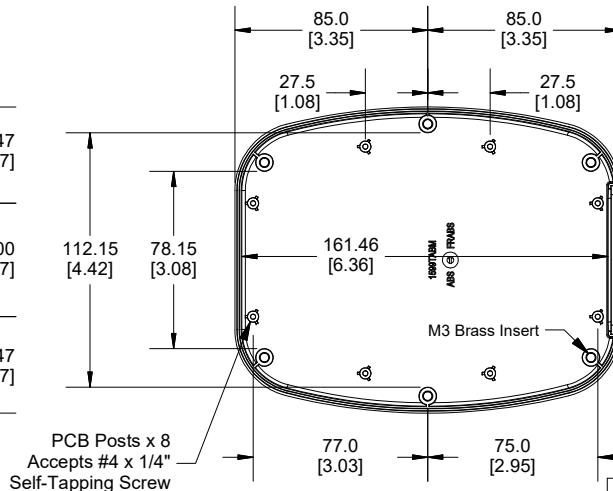
Removable Panel



Inside View Bottom



Inside View Top



Dimensions:
mm
[inches]

Enclosures can be Factory Modified (Milling, Drilling, Printing etc.)
Contact Factory (modshop@hammfg.com) for quotes
Solid models of this enclosure available in .stp or .x_t
(Part number and text placement/orientation on our products are subject to change,
we do not recommend using them as a locating reference for modification purposes)

NOTE

Purchased assembly includes top and bottom cover, 1 removable panel, battery door, battery spring clips (8 pcs), 9V adapter (2 pcs) and 6 cover screws (M3-0.5 x 18mm).
M3 Brass inserts are installed for cover screws.
Enclosure molded from FR ABS (UL94-V0).

Recommended Cover Screw Torque - 35-40cN-m (50-57 ozf.in)

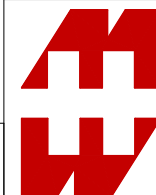
PART NUMBERS

1599TABMBAT Enclosure

Black Enclosure	1599TABMBKBAT
Grey Enclosure	1599TABMGYBAT

ACCESSORIES

Replacement Cover Screws [M3-0.5 x 18mm] (Pkg 100)	1594MS100 (Silver) 1594MS100BK (Black)
P.C. Board Screws (#4 x 1/4" Self Tapping)	1593ATS50 (Pkg 50) 1593ATS100 (Pkg 100)
1599TABM End Panel (Single Panel)	1599TABMPLBK-B (Black) 1599TABMPLGY-B (Grey)
9V Battery Kit	53BATCLIP9V-B
AA Battery Clip Kit (4 positive and 4 Negative)	1553HDR-BKIT



**HAMMOND
MANUFACTURING.
1599TABMBAT**

www.hammondmfg.com

24.06.2022