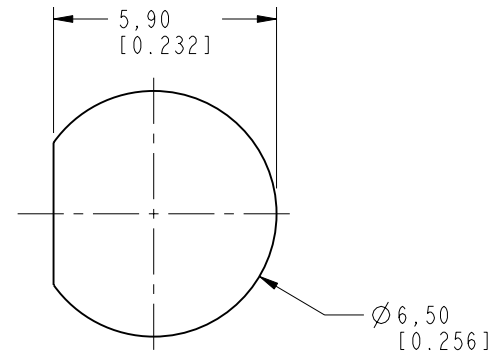


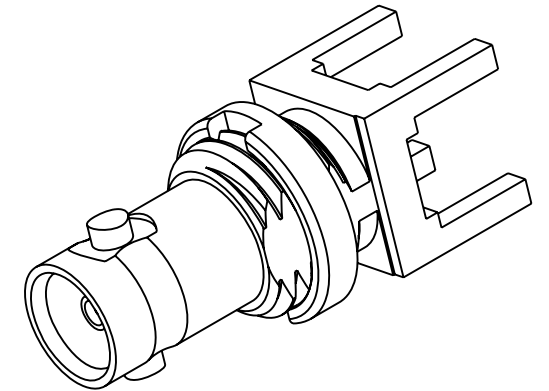
1. MATERIALS AND FINISHES:
BODY - BRASS, GOLD PLATING.
CONTACT - BeCu, GOLD PLATING.
INSULATOR - PTFE, NATURAL
NUT - BRASS, NICKLE PLATING
2. ELECTRICAL:
A. IMPEDANCE: 75 OHM
B. FREQUENCY RANGE: DC-18 GHz
C. RETURN LOSS (VSWR): -25dB (1.12) MAX DC-6 GHz
-20dB (1.22) MAX 6-12 GHz
D. DIELECTRIC WITHSTANDING VOLTAGE: 1000 VRMS, MIN.
3. MECHANICAL:
A. DURABILITY: 500 CYCLES MIN.
B. TEMPERATURE RANGE: -65° C TO +165° C
4. PACKAGING:
A. QUANTITY: SINGLE PACK
B. MARKING: BAG TO BE MARKED:
"AMPHENOL RF, 34-1126-12G DATE CODE"

REVISIONS

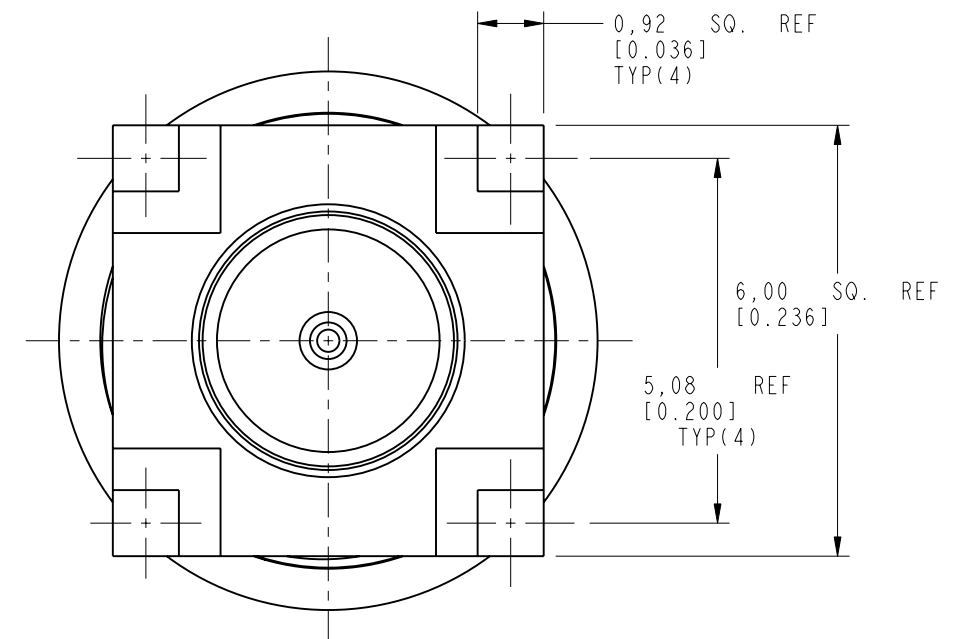
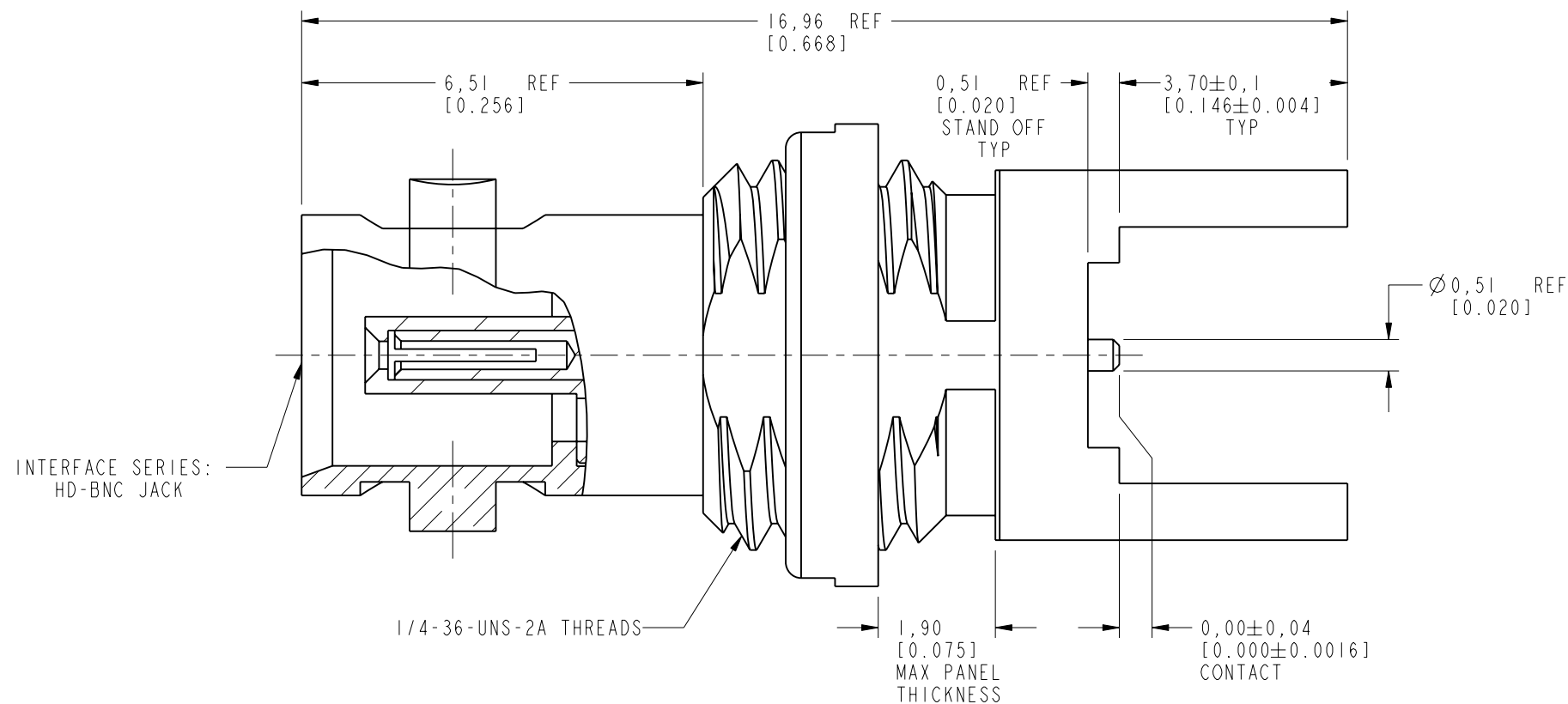
REV	DESCRIPTION	DATE	ECN	APPR
A	RELEASE TO MFG.	30-Jun-18	08470	CJV



SCALE 5.000
RECOMMENDED PANEL CUTOUT
DIMENSIONS



SCALE 4.000

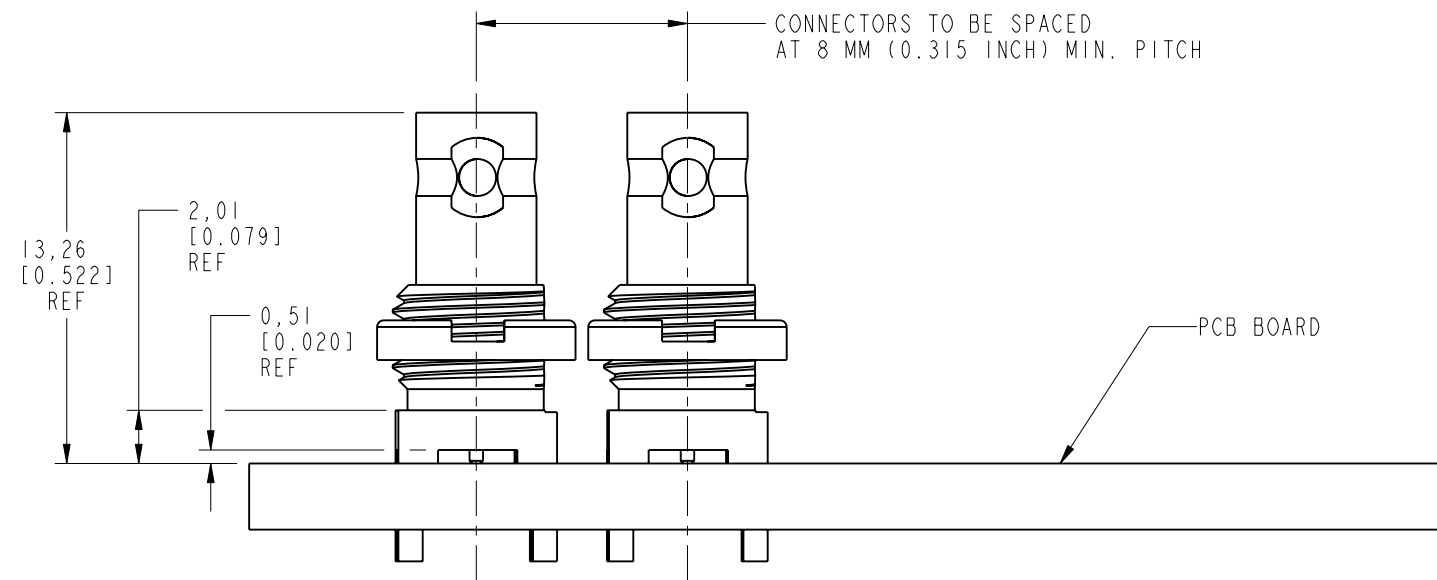
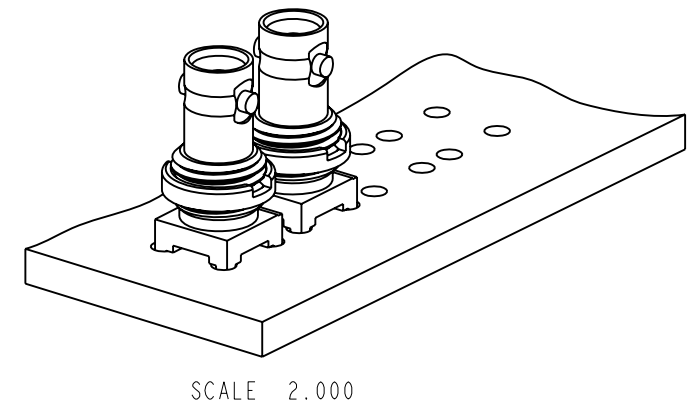
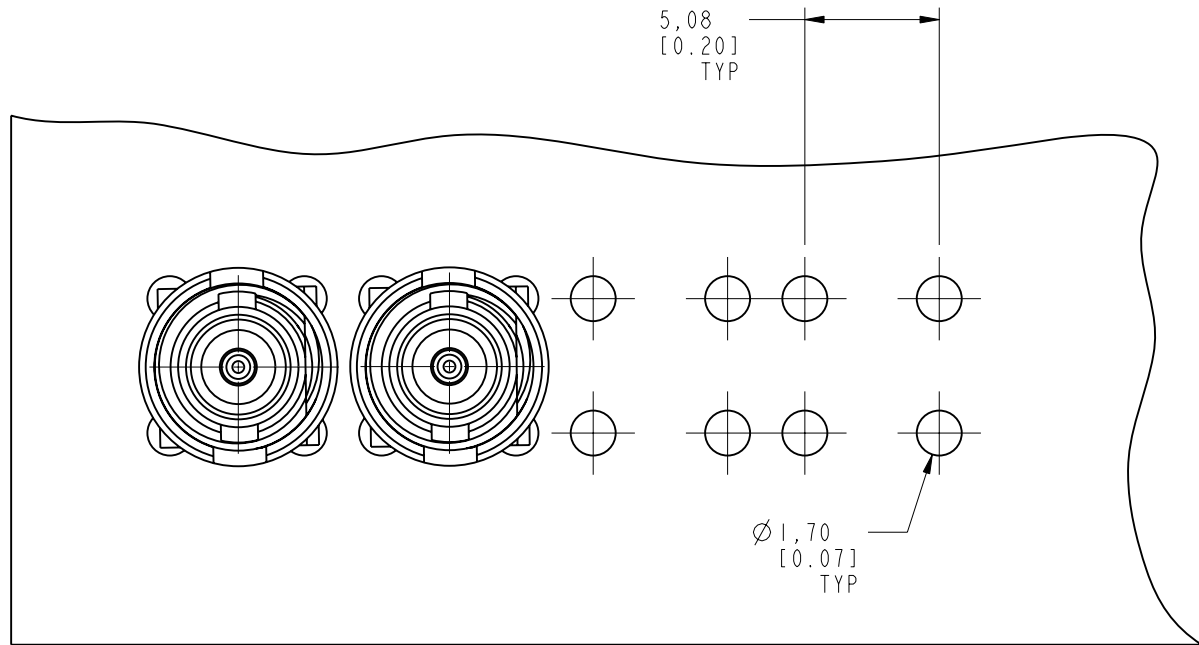


ALL OTHER SHEETS ARE FOR INTERNAL USE ONLY

UNLESS OTHERWISE SPECIFIED, DIMENSIONS ARE IN METRIC AND TOLERANCES ARE: <0.5mm 0.5 - 6mm 6 - 30mm 30 - 120mm ANGLES ± 0.05mm ±0.1mm ±0.2mm ± 0.3mm ±1°					MATERIAL		DRAWN		DATE		TITLE HB-BNC STR BHD JACK RECEPTACLE THRU HOLE PCB, SMT CONTACT				Amphenol RF www.amphenolrf.com			
NOTICE - These drawings, specifications, or other data (1) are, and remain the property of Amphenol corp. (2) must be returned upon request; and (3) are confidential and not to be disclosed to any person other than those to whom they are given by Amphenol Corp. the furnishing of these drawings, specifications, or other data by Amphenol Corp., or to any other person to anyone for any purpose is not to be regarded by implication or otherwise in any manner licensing, granting rights to permitting such holder or any other person to manufacture, use or sell any product, process or design, patented or otherwise, that may in any way be related to or disclosed by said drawings, specifications, or other data.					SEE NOTES		ENGINEER		DATE									
					REFERENCE		SUNDE		30-Jun-18									
					EAR# 8093		APPROVED		DATE									
					REF: 34-1028-12G		FIGO		17-Jul-18									
					CONFIGURATION LEVEL: In Work		CAD FILE		SCALE: 9.5:1.0		SHEET 2 OF 3							
					FINISH				DWG SIZE		REV		DRAWING NO. 34-1126-12G					
									B		A		ITEM NO. 34-1126-12G					
													PART NO. 34-1126-12G					

THIRD ANGLE PROJ.

REVISIONS				
REV	DESCRIPTION	DATE	ECN	APPR
A	RELEASE TO MFG.	30-Jun-18	08470	CJV



RECOMMENDED PCB MOUNTING HOLES

CUSTOMER OUTLINE DRAWING

ALL OTHER SHEETS ARE FOR INTERNAL USE ONLY

<div>UNLESS OTHERWISE SPECIFIED, DIMENSIONS ARE IN METRIC AND TOLERANCES ARE:</div> <div><div><div><0.5mm</div><div>0.5 - 6mm</div><div>6 - 30mm</div><div>30 - 120mm</div><div>ANGLES</div></div><div><div>± 0.05mm</div><div>±0.1mm</div><div>±0.2mm</div><div>± 0.3mm</div><div>±1°</div></div></div> <div>NOTICE - These drawings, specifications, or other data (1) are, and remain the property of Amphenol corp. (2) must be returned upon request; and (3) are confidential and not to be disclosed to any person other than those to whom they are given by Amphenol Corp. the furnishing of these drawings, specifications, or other data by Amphenol Corp., or to any other person to anyone for any purpose is not to be regarded by implication or otherwise in any manner licensing, granting rights to permitting such holder or any other person to manufacture, use or sell any product, process or design, patented or otherwise, that may in any way be related to or disclosed by said drawings, specifications, or other data.</div>	MATERIAL	DRAWN	DATE	TITLE		Amphenol RF	
	-	W.ZENG	30-Jun-18	HB-BNC STR BHD JACK		www.amphenolrf.com	
	REFERENCE	ENGINEER	DATE	RECEPTACLE		DRAWING NO. 34-1126-12G	
	EAR# 8093	SUNDE	30-Jun-18	THRU HOLE PCB, SMT CONTACT		ITEM NO. 34-1126-12G	
	REF: 34-1028-12G	APPROVED	DATE	SCALE: 3.5:1.0		PART NO. 34-1126-12G	
CONFIGURATION LEVEL: In Work	FIGO	17-Jul-18	SHEET 3 OF 3				
FINISH	CAD FILE	DWG SIZE		REV			
		B		A			