



Part Number : [1053141212](#)

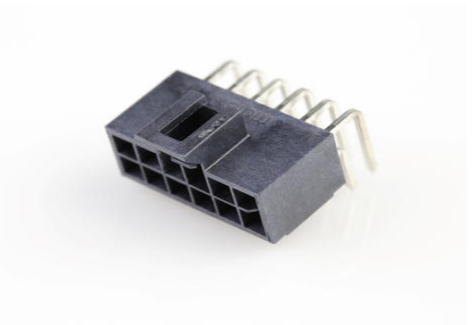
Product Description : Nano-Fit Right-Angle Header, Through Hole, 2.50mm Pitch, Dual Row, 12 Circuits, 0.38µm Gold (Au) Plating, Black, Glow-Wire Capable, Tray

Series Number : 105314

Status : Active

Product Category : PCB Headers and Receptacles

Packaging Alternative : [1053141712](#) (Embossed Tape on Reel)



Documents and Resources

Drawings

[1053141212_sd.pdf](#)

[PK-105309-200-000.pdf](#)

3D Models and Design Files

[STEP AP242](#)

[SOLIDWORKS](#)

[Creo](#)

[Symbol and Footprint \(Multi-Format\)](#)

[SYM-105314-XX12-001.zip](#)

Specifications

[AS-105300-100-001.pdf](#)

[1053001000-PS-CH-000.pdf](#)

[1053001000-PS-ES-000.pdf](#)

[1053001000-PS-JP-000.pdf](#)


[1053001000-PS-SK-000.pdf](#)

[PS-105300-100-001.pdf](#)

[1053000000-TS-000.pdf](#)

Product Environment Compliance

Compliance

GADSL/IMDS	Compliant with Exemption 44; 34; 33
China RoHS	 per SJ/T 11365-2006
EU ELV	Compliant per 2000/53/EC
Low-Halogen Status	Low-Halogen per IEC 61249-2-21
REACH SVHC	Not Contained per D(2025)7771-DC (04 Feb 2026)
EU RoHS	Compliant per EU 2015/863

Compliance Statements

- EU RoHS
- REACH SVHC
- Low-Halogen

Industry Documents

- IPC 1752A Class C
- IPC 1752A Class D
- Molex Product Compliance Declaration
- IEC-62474
- chemSHERPA (xml)

Substances of Interest

- PFAS

EU RoHS Certificate of Compliance

Additional Product Compliance Information

Part Details

General

Status	Active
Category	PCB Headers and Receptacles
Series	105314
Description	Nano-Fit Right-Angle Header, Through Hole, 2.50mm Pitch, Dual Row, 12 Circuits, 0.38µm Gold (Au) Plating, Black, Glow-Wire Capable, Tray
Application	Power, Wire-to-Board
Component Type	PCB Header
Product Name	Nano-Fit
UPC	887191927572

Agency

CSA	LR19980
UL	E29179

Electrical

Current - Maximum per Contact	7.5A
Voltage - Maximum	250V AC (RMS)/DC

Physical

Breakaway	No
Circuits (Loaded)	12
Circuits (maximum)	12
Color - Resin	Black
Durability (mating cycles max)	50
First Mate / Last Break	No
Glow-Wire Capable	Yes
Guide to Mating Part	No
Keying to Mating Part	Yes
Lock to Mating Part	Yes
Material - Metal	Brass
Material - Plating Mating	Gold
Material - Plating Termination	Tin
Material - Resin	Liquid Crystal Polymer (LCP)
Net Weight	1.290/g
Number of Rows	2
Orientation	Right Angle
Packaging Type	Tray
PCB Locator	Yes
PCB Retention	Yes
PCB Thickness - Recommended	1.60mm, 2.40mm
PC Tail Length	3.20mm
Pitch - Mating Interface	2.50mm
Pitch - Termination Interface	2.50mm
Plating min - Mating	0.381µm
Plating min - Termination	1.524µm

Polarized to Mating Part	Yes
Polarized to PCB	Yes
Shrouded	Shrouded
Stackable	No
Temperature Range - Operating	-40° to +125°C
Termination Interface Style	Through Hole

Mates With / Use With

Mates with Part(s)

Description	Part Number
Nano-Fit Receptacle Housing, TPA Capable, 2.50mm Pitch, Dual Row, 12 Circuits, Black, Glow-Wire Capable	<u>1053081212</u>
Nano-Fit Receptacle Housing, TPA Capable, 2.50mm Pitch, Dual Row, 12 Circuits, Black, Glow-Wire Capable, for UL 1569/1007 Wire	<u>2263621212</u>

This document was generated on May 21, 2026